

# Roundtable Assigned Portable Noise Monitoring

Subcommittee Report

San Francisco Airport/Community Roundtable  
Portable Noise Monitoring Subcommittee



# Agenda

1. Portable Noise Monitoring Subcommittee
2. Review Current Assignments
  - A. Pacifica
  - B. Palo Alto/East Palo Alto/Menlo Park
  - C. East Palo Alto
3. Summary of Monitoring
4. Existing Permanent Portable Monitoring
  - A. Woodside VOR
  - B. Portola Valley
  - C. Brisbane
    - i. Mission Blue Community Center
    - ii. Trinity Road
5. Open Discussion - Questions and Answers

# All Community Noise Monitoring Locations Currently Active

Permanent Locations are numbered 1 - 29

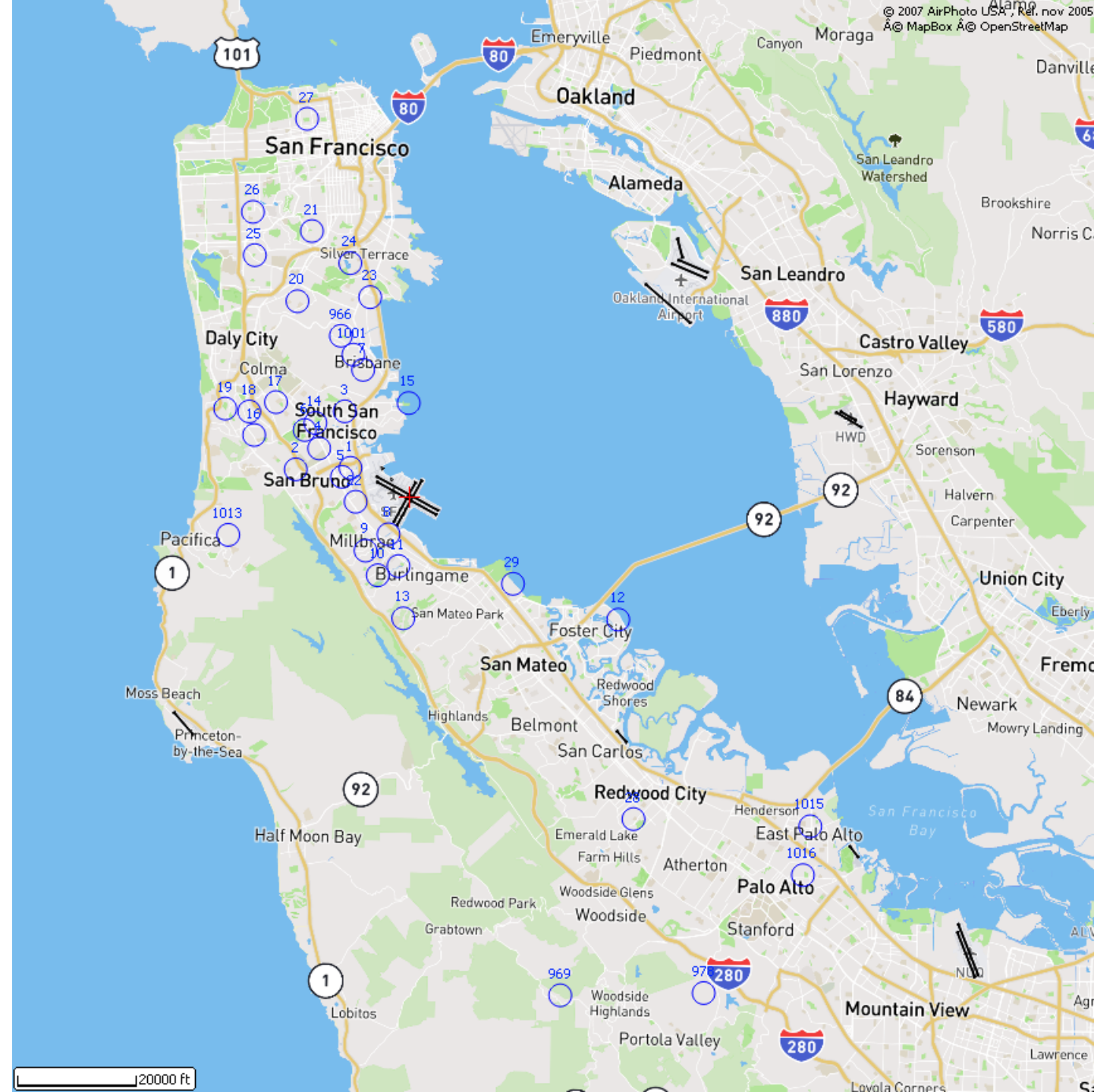
Portable Locations are numbered 900+

Roundtable Assigned locations:

Pacifica – 1013

East Palo Alto – 1015

Palo Alto – 1016

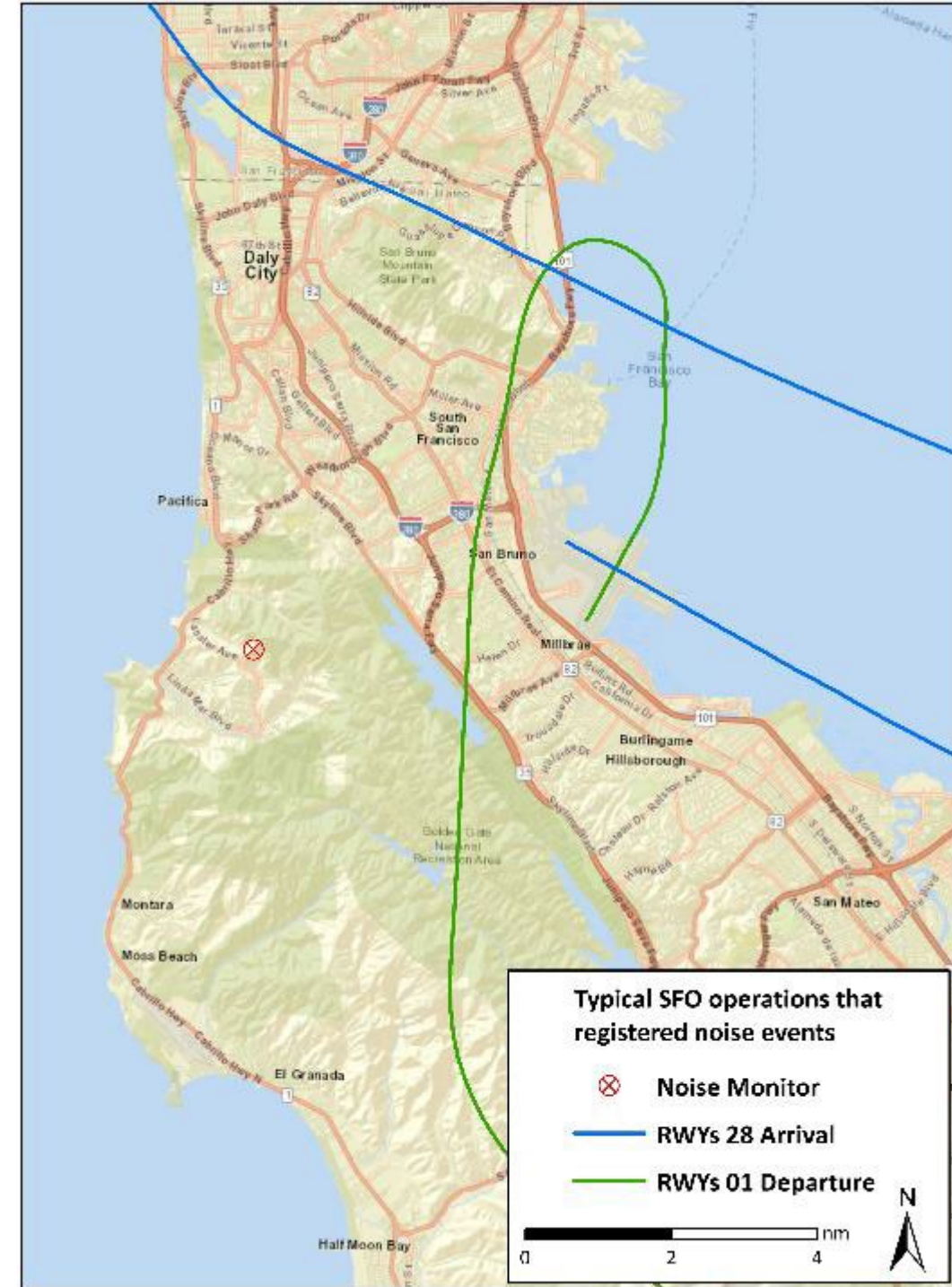


# Portable Noise Monitoring Subcommittee

1. Formed in May 2020
2. Up to four portable monitors would be used for recommended monitoring locations
3. To recommend monitoring locations at its discretion
4. Assist the SFO Noise Office with contact information for recommended locations
5. Review data provided by the SFO Noise Office

# Current Assignments

1. Pacifica – 1013
  - A. Location – Fassler Water Tank
  - B. Captures CNDEL (OAK), SSTIK (SFO) and some flights on Oceanic Arrivals
  - C. Approximately 3.5 miles outside the 65 dB CNEL Noise Exposure Map



# Current Assignments

2. East Palo Alto – 1015
  - A. Location – East Palo Alto City Hall Roof
  - B. Captures some BDEGA and SERFR Arrivals, many Palo Alto Airport operations
  - C. Approximately 11.4 miles outside the 65 dB CNEL Noise Exposure Map

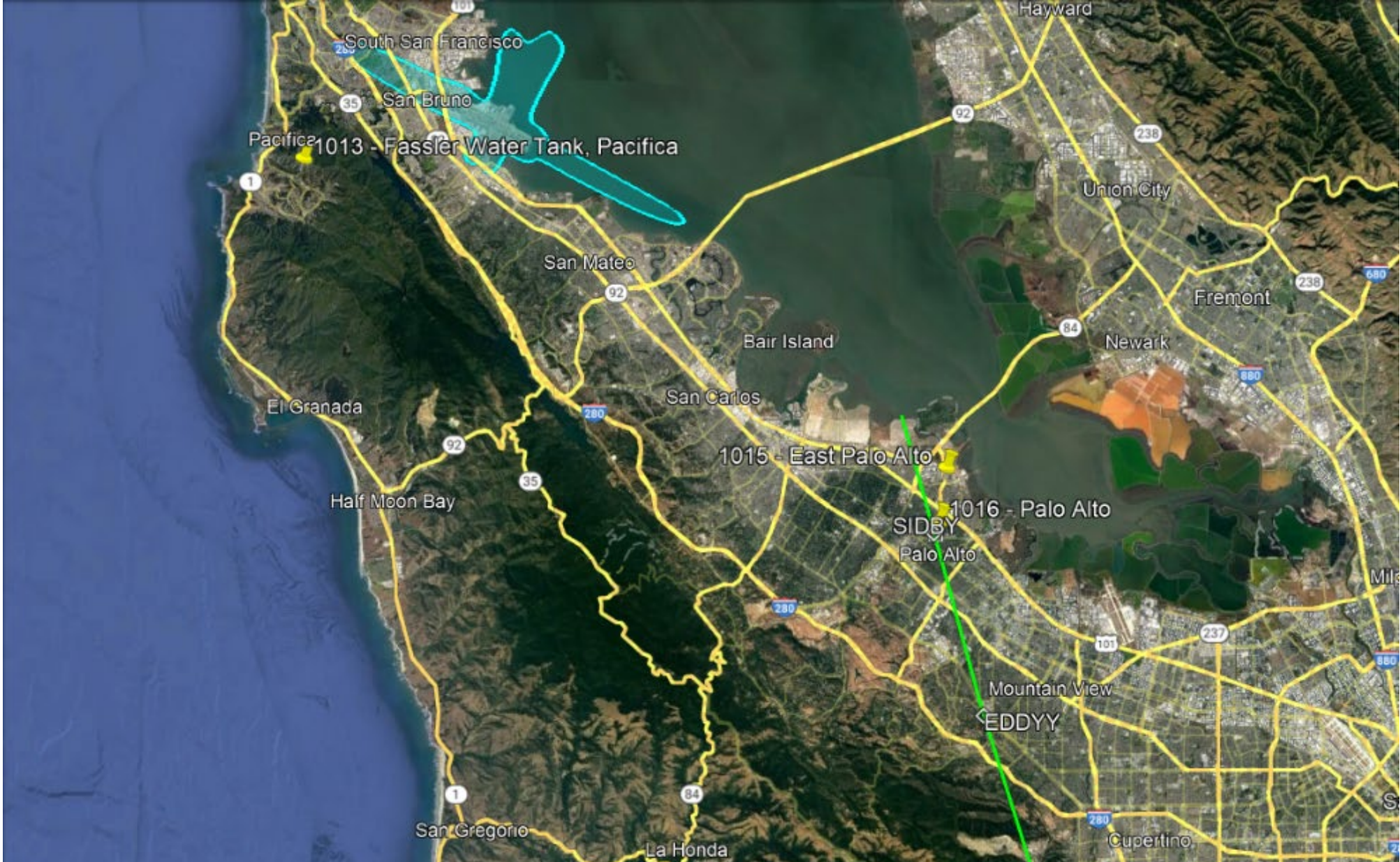


# Current Assignments

3. Palo Alto – 1016
  - A. Location – Private Residence on Tevis Place near Eleanor Pardee Park
  - B. Captures flights on the SERFR Arrival
  - C. Very close to the SIDBY waypoint
  - D. Approximately 10.5 miles outside the 65 dB CNEL Noise Exposure Map



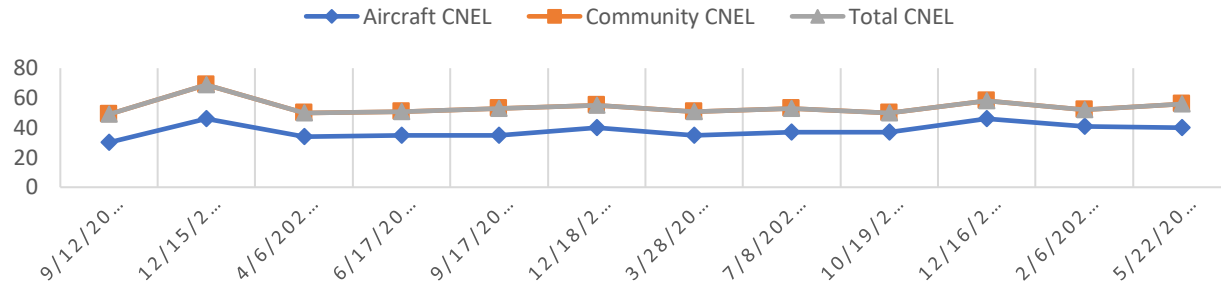
# Current Assignments



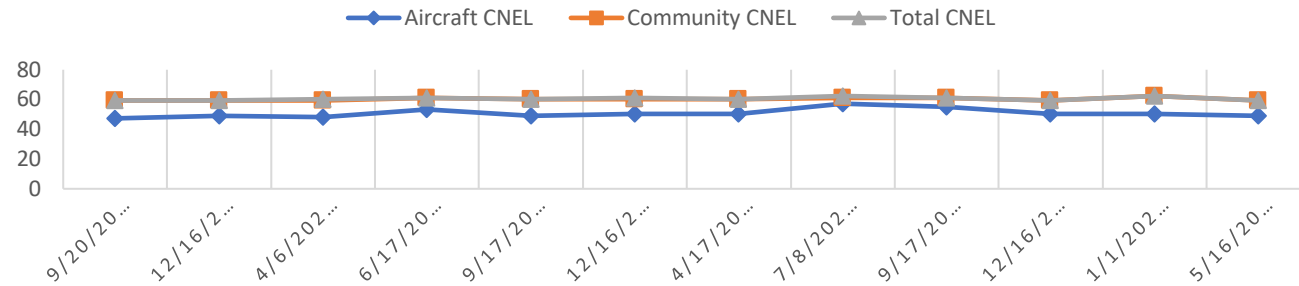


# Summary of Monitoring

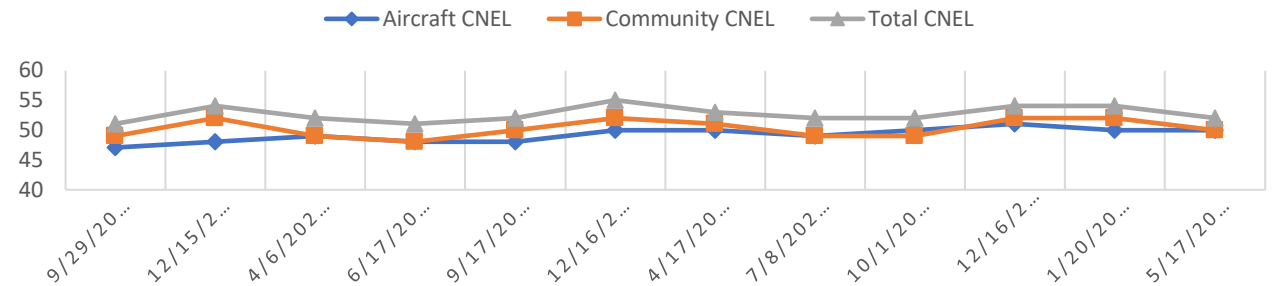
## PACIFICA



## EAST PALO ALTO



## PALO ALTO



# Existing Permanent Portable Noise Monitoring

- A. Woodside VOR
- B. Portola Valley
- C. Brisbane
  - i. Mission Blue Community Center
  - ii. Trinity Road

