

December 4, 2019

SFO Community Roundtable

**Jet Flights Noise Disturbance
Pt. Richmond/Richmond CA
(adjacent to waypoint REBAS)**

Yvonne McHugh, Ph.D.

ymchugh@sbcglobal.net

Graphics for:

Yvonne McHugh, Ph.D.

December 4, 2019

SFO Community Roundtable

Pt. Richmond, REBAS, WEGNA, NIITE, SFO, OAK

Pt. Richmond residence GPS, REBAS, WEGNA

Procedure NIITE, aircraft turn north to REBAS

NIITE Departure

Example of intense aircraft overflights 10PM -7AM

Flights within 1 mile radius of residence (24hrs)

10/5/19 West Plan. Full thrust, noisy, low-frequency impact

Flights within 1 mile radius of residence (24hrs)

11/30/19 Southeast Plan. Very low, slow flights.





Reference Point – GPS location is: 37.913400, -122.380178
Cylinder Filter: 5,280 ft. Radius; 50,000 ft. Height
Any aircraft that penetrated this cylinder was evaluated

(NIITE3.NIITE) 17341

NIITE THREE DEPARTURE (RNAV)

AL-375 (FAA)

SAN FRANCISCO INTL (SFO)
SAN FRANCISCO, CALIFORNIA

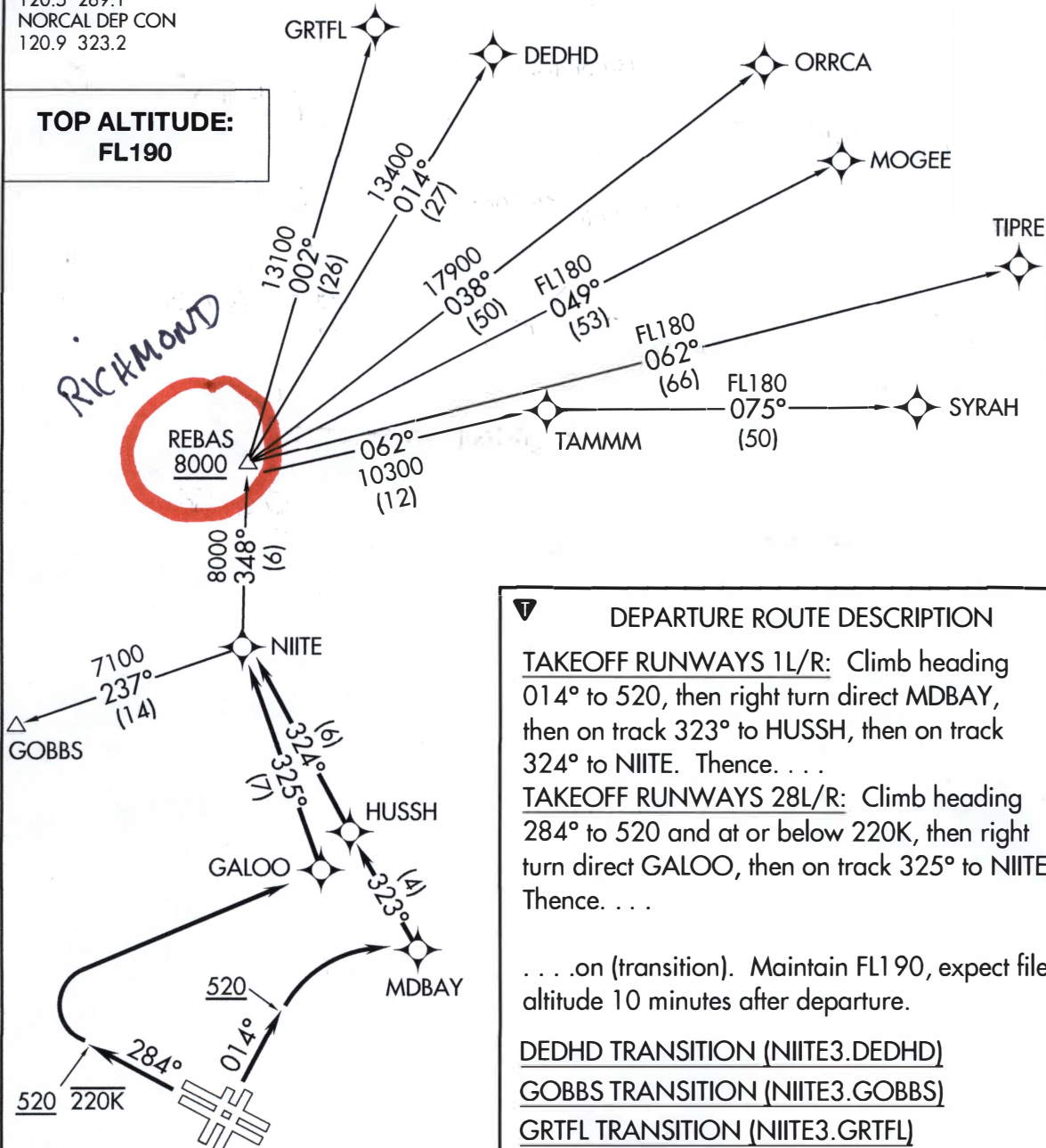
D-ATIS
113.7 115.8 118.85
CLNC DEL
118.2
CPDLC
GND CON
121.8
SAN FRANCISCO TOWER
120.5 269.1
NORCAL DEP CON
120.9 323.2

TAKEOFF MINIMUMS

Rwys 1L/R: Standard with a minimum climb of 500' per NM to 520.
Rwy 28L: Standard with minimum climb of 535' per NM to 2100.
Rwy 28R: Standard with minimum climb of 560' per NM to 2100.

**TOP ALTITUDE:
FL190**

SW-2, 12 SEP 2019 to 10 OCT 2019



DEPARTURE ROUTE DESCRIPTION

TAKEOFF RUNWAYS 1L/R: Climb heading 014° to 520, then right turn direct MDBAY, then on track 323° to HUSSH, then on track 324° to NIITE. Thence. . . .

TAKEOFF RUNWAYS 28L/R: Climb heading 284° to 520 and at or below 220K, then right turn direct GALOO, then on track 325° to NIITE. Thence. . . .

. . . .on (transition). Maintain FL190, expect filed altitude 10 minutes after departure.

DEDHD TRANSITION (NIITE3.DEDHD)
GOBBS TRANSITION (NIITE3.GOBBS)
GRTFL TRANSITION (NIITE3.GRTFL)
MOGEE TRANSITION (NIITE3.MOGEE)
ORRCA TRANSITION (NIITE3.ORRCA)
SYRAH TRANSITION (NIITE3.SYRAH)
TIPRE TRANSITION (NIITE3.TIPRE)

NOTE: RNAV 1.
NOTE: RADAR required.
NOTE: DME/DME/IRU or GPS required.

NOTE: Chart not to scale.

SW-2, 12 SEP 2019 to 10 OCT 2019

NIITE THREE DEPARTURE (RNAV)
(NIITE3.NIITE) 20AUG15

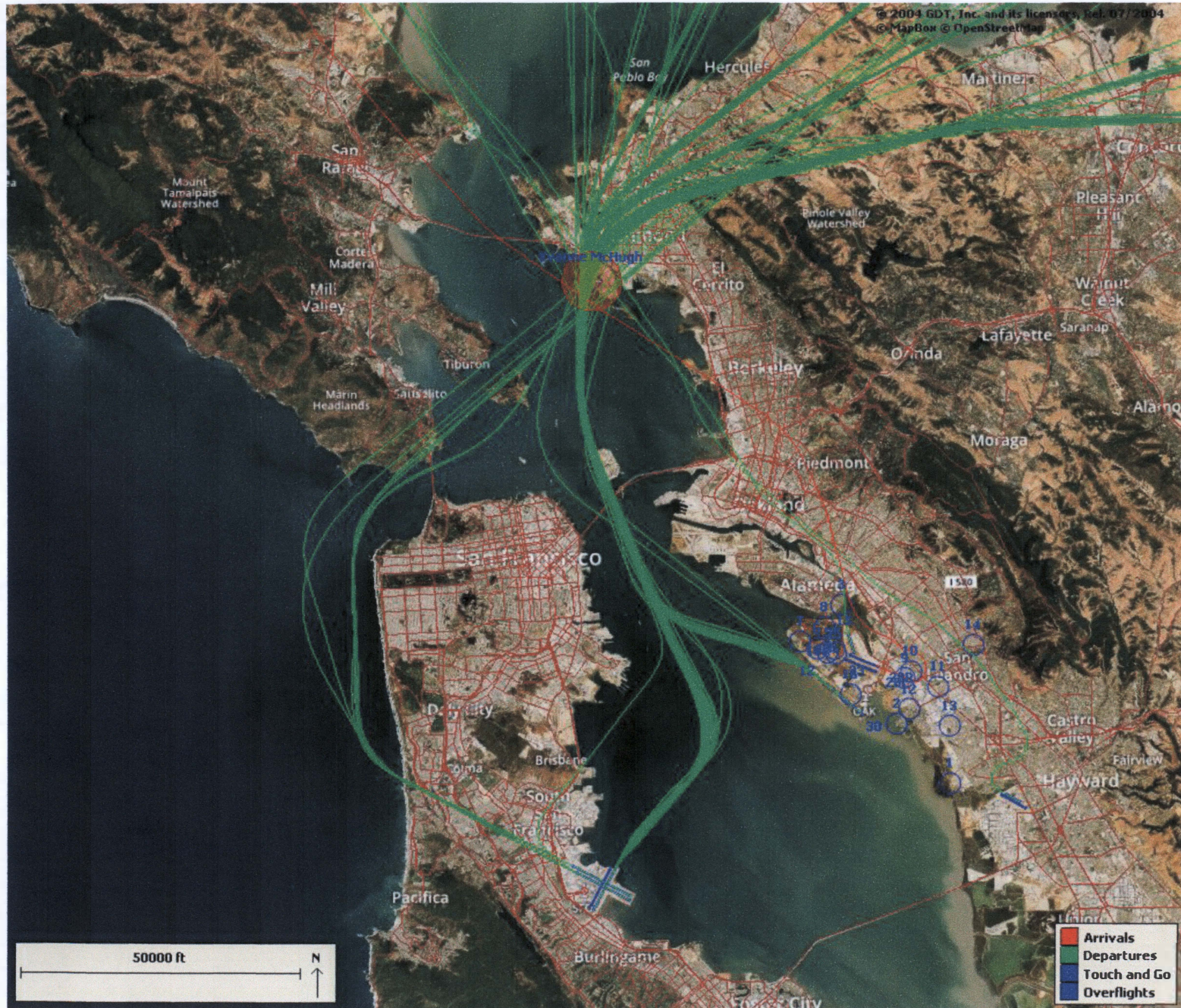
SAN FRANCISCO, CALIFORNIA
SAN FRANCISCO INTL (SFO)

JET FLIGHT NOISE DISTURBANCES AT PT. RICHMOND, CA ADJACENT TO WAYPOINT REBAS

12/3/2019 PM - 12/4/2019 EARLY AM

Dec 3, 23:47:01 UA 995 (SFO:ORD B772 290k, 10899ft) • Flight was LOUD	Dec 4, 06:58:58 WN 588 (OAK:MDW B738 308k, 10722ft) • Flight was LOUD
Dec 3, 23:39:52 AS 254 (SFO:JFK B739 297k, 10430ft) • Flight was LOUD	Dec 4, 06:57:11 UA2115 (SFO:DEN B753 343k, 11694ft) • Flight was LOUD
Dec 3, 23:38:47 UA1061 (SFO:EWI A320 293k, 10515ft) • Flight was LOUD	Dec 4, 06:54:08 B6 16 (SFO:JFK A321 296k, 10490ft) • Flight was LOUD
Dec 3, 23:18:38 UA2237 (SFO:MCO B738 308k, 10679ft) • Flight was LOUD	Dec 4, 06:52:42 DL 868 (SFO:JFK B752 333k, 11230ft) • Flight was LOUD
Dec 3, 23:15:28 UA1152 (SFO:IAH A320 319k, 10840ft) • Flight was LOUD	Dec 4, 03:21:57 FX1857 (OAK:PDX MD11 355k, 11368ft) • Flight was LOUD
Dec 3, 23:13:35 UA 351 (SFO:SEA B738 314k, 13590ft) • Flight was LOUD	Dec 4, 03:11:49 FX1885 (OAK:SEA MD11 314k, 10302ft) • Flight was LOUD
Dec 3, 23:08:36 AA 276 (SFO:JFK A321 307k, 9628ft) • Flight was LOUD	Dec 4, 01:28:19 AI 184 (SFO:DEL B77L 320k, 12147ft) • Flight was LOUD
Dec 3, 23:03:00 UA1145 (SFO:OUN B739 299k, 9375ft) • Flight was LOUD	Dec 4, 01:15:30 UA1751 (SFO:IAH A320 294k, 10258ft) • Flight was LOUD
Dec 3, 22:56:24 AA1793 (SFO:OLT A321 294k, 7445ft) • Flight was LOUD	Dec 4, 01:06:50 UA 680 (SFO:ORD B739 313k, 10839ft) • Flight was LOUD
Dec 3, 22:54:20 UA 726 (SFO:EWR B772 301k, 8750ft) • Flight was LOUD	Dec 4, 00:22:44 AA2688 (SFO:MIA B738 277k, 10188ft) • Flight was LOUD
Dec 3, 22:51:26 WN2451 (OAK:SEA B738 344k, 11867ft) • Flight was LOUD	Dec 4, 00:21:03 UA 327 (SFO:ORD B772 298k, 11601ft) • Flight was LOUD
Dec 3, 22:48:40 UA1554 (SFO:ATL B739 308k, 12289ft) • Flight was LOUD	Dec 4, 00:18:55 B6 278 (SFO:FLL A321 281k, 9485ft) • Flight was LOUD
Dec 3, 22:30:11 WN1710 (OAK:PDX B737 343k, 11190ft) • Flight was LOUD	Dec 4, 00:10:36 AA1253 (SFO:ORD B738 317k, 11508ft) • Flight was LOUD
Dec 3, 22:27:31 WN3266 (OAK:GEG B737 320k, 10887ft) • Flight was LOUD	Dec 4, 00:07:34 UA 643 (SFO:PHL B739 297k, 10311ft) • Flight was LOUD
Dec 3, 22:23:24 B6 633 (SFO:A321 305k, 9212ft) • Flight was LOUD	Dec 4, 00:05:07 AC 754 (SFO:YYZ B763 366k, 12671ft) • Flight was LOUD
Dec 3, 21:58:15 UA 954 (SFO:TLV B77W 327k, 11439ft) • Flight was LOUD	
Dec 3, 20:36:33 AC8943 (SFO:YVR CRJ9 371k, 11947ft) • Flight was LOUD	
Dec 3, 20:08:20 WN3770 (OAK:AUS B738 299k, 10334ft) • Flight was LOUD	
Dec 3, 19:48:36 UA 930 (SFO:LHR B772 355k, 12244ft) • Flight was LOUD	
Dec 3, 19:41:49 (<i>could not pick a flight</i>)	
Dec 3, 19:38:18 EI 146 (SFO:DUB A333 328k, 11048ft) • Flight was LOUD	
Dec 3, 19:30:39 FX1605 (OAK:IND DC10 273k, 8593ft) • Flight was LOUD	
Dec 3, 19:19:03 TK 80 (SFO:IST B77W 330k, 10798ft) • Flight was LOUD	
Dec 3, 18:59:42 UA 926 (SFO:FRA B77W 370k, 11222ft) • Flight was LOUD	
Dec 3, 18:54:30 WN 440 (OAK:DAL B738 291k, 8563ft) • Flight was LOUD	
Dec 3, 18:39:04 AS2574 (OAK:PDX B75L 315k, 10958ft) • Flight was LOUD	
Dec 3, 17:51:34 SK 936 (SFO:CPH A343 292k, 10284ft) • Flight was LOUD	
Dec 3, 17:42:15 BA 284 (SFO:LHR B744 374k, 12318ft)	

Oct.5, 2019 Flight Tracks at Pt. Richmond for 24 hours (near REBAS)



November 30 2019 OAK Arrivals over Pt. Richmond CA near REBAS

