



Airport Director's Report

Presented at the November 2, 2016
Airport Community Roundtable Meeting

Aircraft Noise Abatement Office
September 2016



San Francisco
International
Airport

Monthly Noise Exceedance Report
 San Francisco International Airport -- Director's Report
 Period: September 2016



Airline	Noise Exceedances				Noise Exceedance Quality Rating
	Total Noise Exceedances	Total Operations per Month	Exceedances per 1,000 Operations	Score	
SKW	29	6,303	5	9.98	
ACA	5	669	7	9.97	
DLH	1	119	8	9.96	
BAW	1	118	8	9.96	
KLM	1	74	14	9.94	
CPZ	13	948	14	9.94	
DAL	28	1,973	14	9.94	
VRD	51	3,434	15	9.94	
CES	1	62	16	9.93	
SWA	60	2,735	22	9.91	
FFT	11	483	23	9.90	
VOI	3	110	27	9.88	
AAL	81	2,661	30	9.87	
ANA	2	59	34	9.85	
UAL	385	10,915	35	9.85	
ASA	37	1,033	36	9.85	
JBU	39	964	40	9.83	
WJA	6	120	50	9.79	
ETD	4	61	66	9.72	
TAI	7	83	84	9.64	
AMX	16	171	94	9.60	
HAL	13	117	111	9.52	
FDX	11	84	131	9.44	
CCA	13	94	138	9.41	
CMP	10	61	164	9.30	
GTI	19	88	216	9.07	
SIA	28	118	237	8.98	
NCA	13	52	250	8.93	
CAL	32	100	320	8.63	
JAL	20	60	333	8.57	
CPA	47	135	348	8.51	
ANZ	23	60	383	8.36	
AIC	10	25	400	8.29	
EVA	54	124	435	8.13	
PAL	38	60	633	7.29	
KAL	84	119	706	6.97	
AAR	92	108	852	6.35	
PAC	2	2	1,000	5.71	
CKS	8	6	1,333	4.29	
QFA	119	51	2,333	0.00	
TOTAL	1,417	34,559	10,968		

Source: SFO Noise Abatement Office

Historical Significant Exceedances Report
 San Francisco International Airport -- Director's Report
 Period: **September 2016**



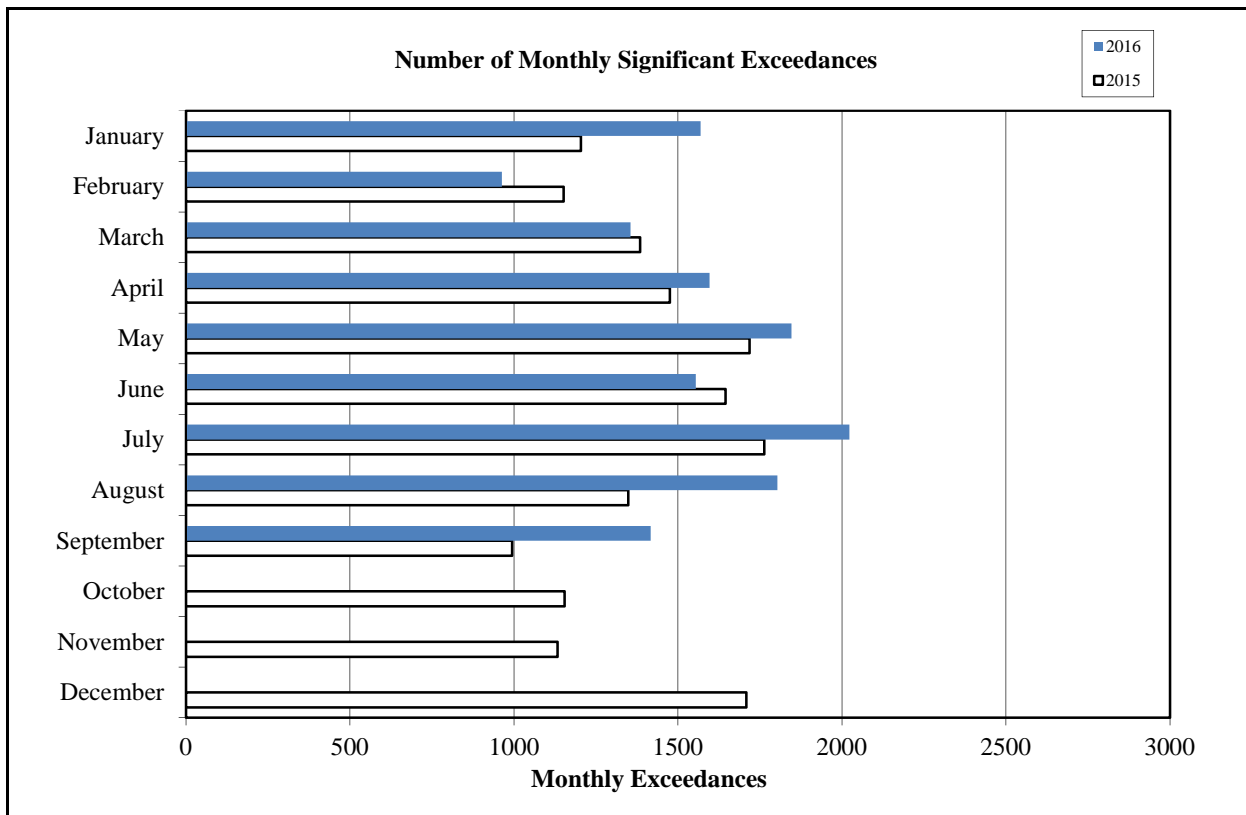
San Francisco International Airport

Month	Number of Monthly Significant Exceedances					Change from Last Year
	2012	2013	2014	2015	2016	
January	1,378	1,428	1,184	1,204	1,569	365
February	1,581	1,176	1,141	1,151	963	-188
March	1,703	1,671	1,345	1,384	1,355	-29
April	1,870	1,910*	1,362	1,475	1,596	121
May	1,912	1,859*	1,515	1,718	1,846	128
June	2,355	1,915	1,740	1,645	1,554	-91
July	2,621	1,647	1,619	1,763***	2,023	260
August	1,823	1,638**	1,460	1,348	1,803	455
September	1,464	1,352	1,111	994	1,417	423
October	1,689	1,277	1,055	1,154		0
November	1,421	1,262	1,245	1,133		0
December	1,439	1,160	1,670	1,708		0
Annual Total	21,256	18,295	16,447	16,677	14,126	
Year to Date Trend	21,256	18,295	16,447	16,677	14,126	1444

* Revised with correct amount of exceedance - 8/5/13

** No data available from Site 7, August 1-26

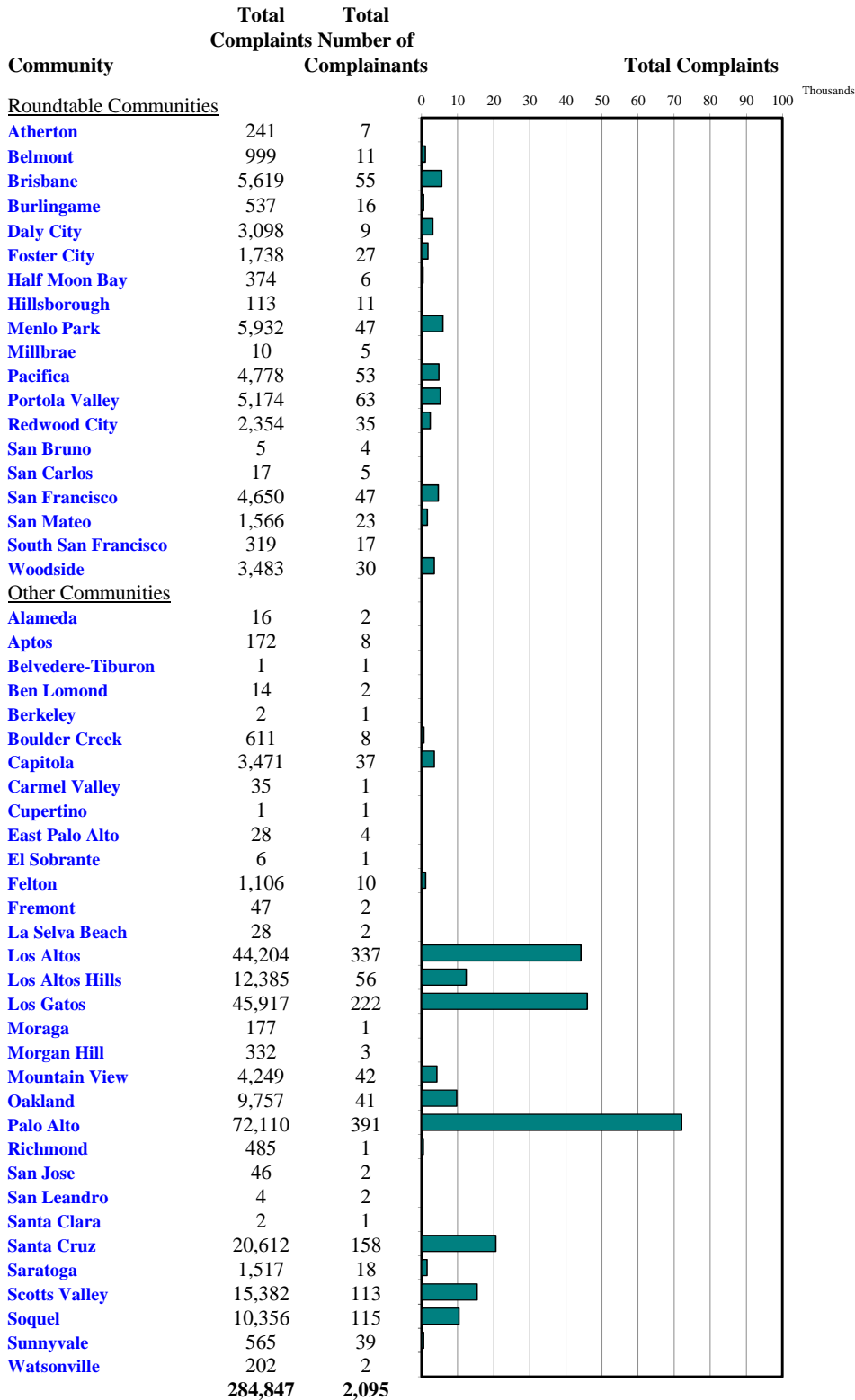
***No data available from Site 2 starting July 17





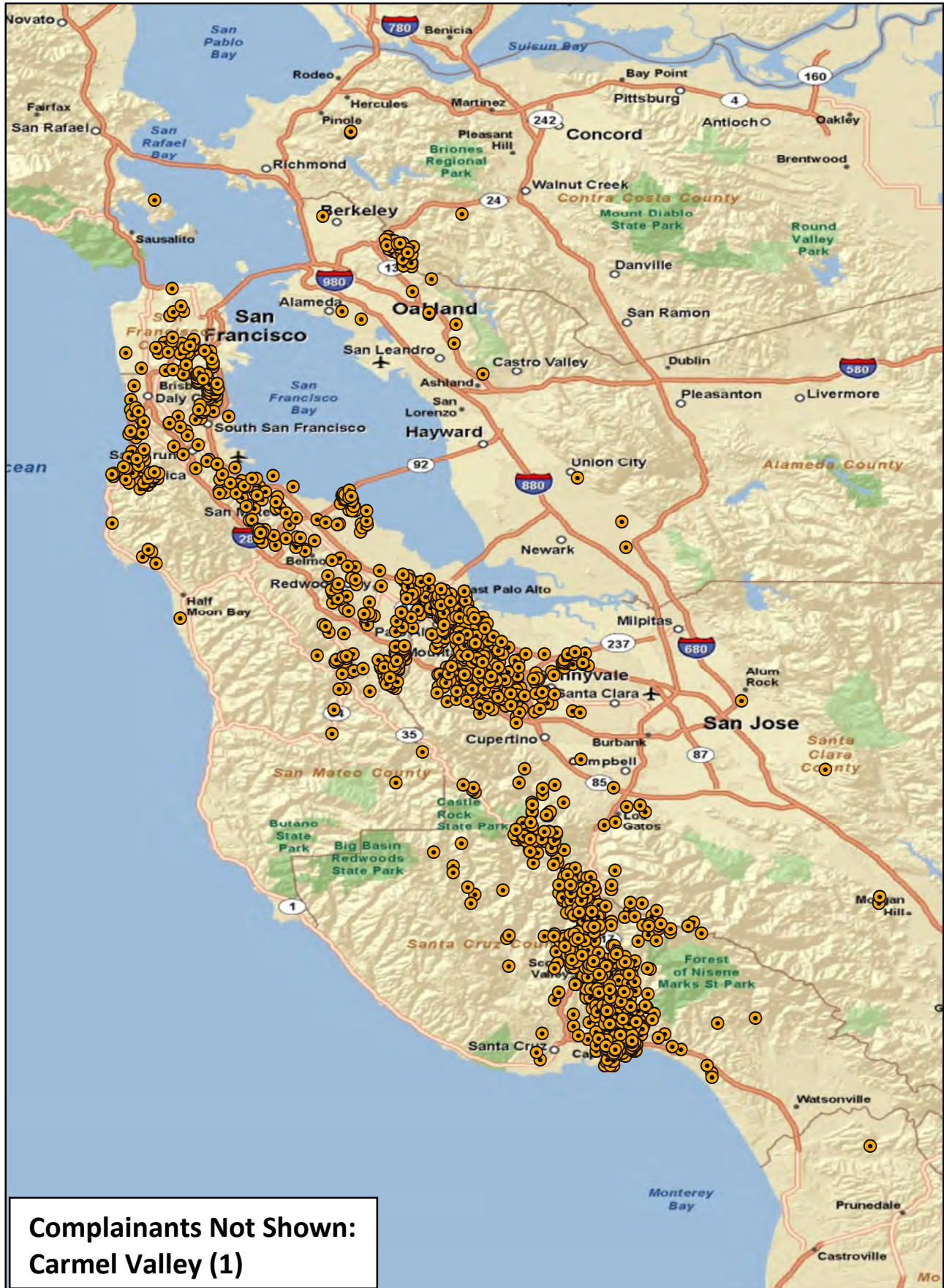
Monthly Calls by Community

Source: Airport Noise Monitoring System



"Our software vendor's address validation relies on USPS-provided ZIP code look up table and USPS-specified 'default city' values."

Monthly Noise Complainant Summary Map September 2016



“Our software vendor’s address validation relies on USPS-provided ZIP code look-up table and the USPS-specified ‘default city’ values”




Monthly Nighttime Power Runups Report (85-06-AOB)

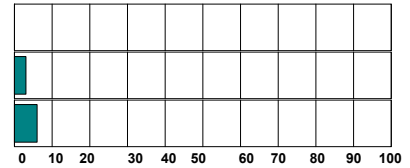
San Francisco International Airport -- Director's Report

Period : **September 2016**

Time of Day : From 10 pm through 7 am



Airline	Code	Number of Runups	Runups Per 1,000 Departures	Percentage of Runups
 DELTA	DAL	1	1.0	8%
 UNITED	UAL	4	0.7	33%
 American Airlines	AAL	7	5.2	58%
Total		12		



A power runup is a procedure used to test an aircraft engine after maintenance is completed.

This is done to ensure safe operating standards prior to returning the aircraft to service.

The power settings tested range from idle to full power and may vary in duration.

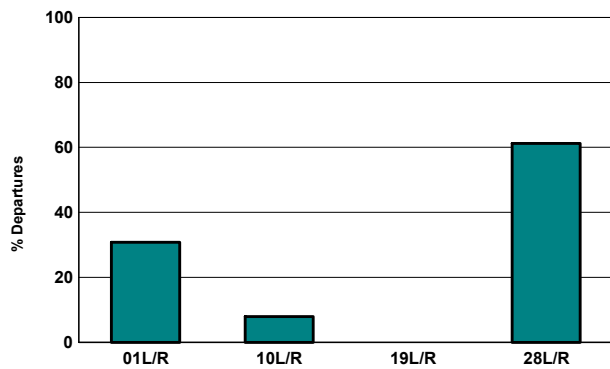


Runway Utilization (1 am to 6 am)

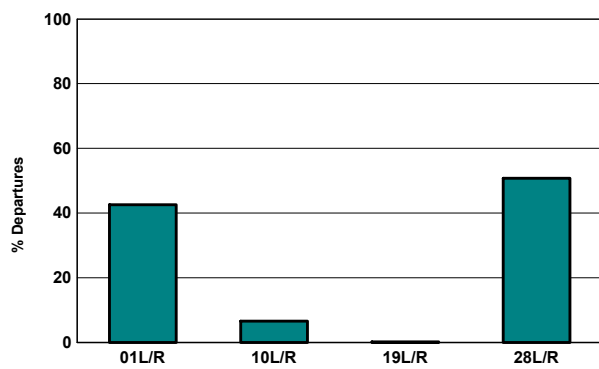
Monthly Jet Departures

	Jan	Feb	Mar	Apr	May	Jun	Jul	Aug	Sep	Oct	Nov	Dec	YTD
01L/R	155	149	168	166	167	216	335	265	140	-	-	-	1,761
10L/R	72	14	85	8	3	9	19	27	36	-	-	-	273
19L/R	5	-	-	-	-	-	-	-	-	-	-	-	5
28L/R	85	93	216	250	287	282	298	309	278	-	-	-	2,098
Total	317	256	469	424	457	507	652	601	454	-	-	-	4,137
01L/R	49%	58%	36%	39%	37%	43%	51%	44%	31%	0%	0%	0%	43%
10L/R	23%	5%	18%	2%	1%	2%	3%	4%	8%	0%	0%	0%	7%
19L/R	2%	0%	0%	0%	0%	0%	0%	0%	0%	0%	0%	0%	0%
28L/R	27%	36%	46%	59%	63%	56%	46%	51%	61%	0%	0%	0%	51%

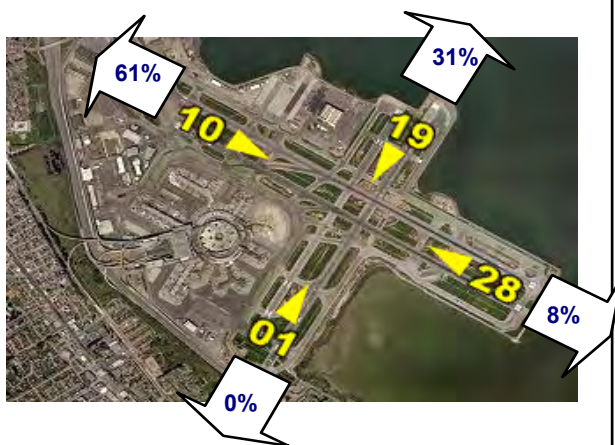
Current Month (1 am to 6 am)



Year-to-Date (1am to 6 am)

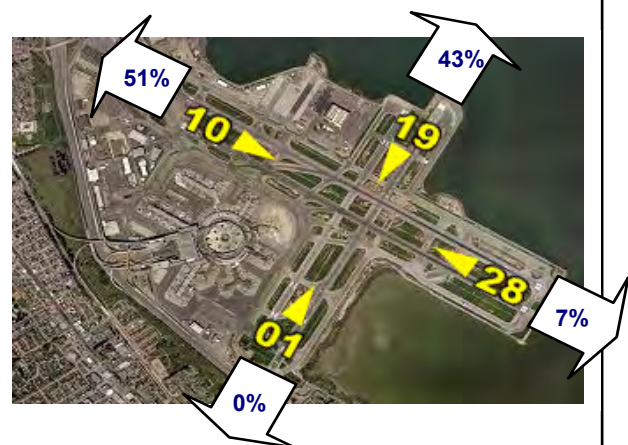


Current Month (1 am to 6 am)



Numbers rounded to nearest whole percentages

Year-to-Date (1am to 6am)



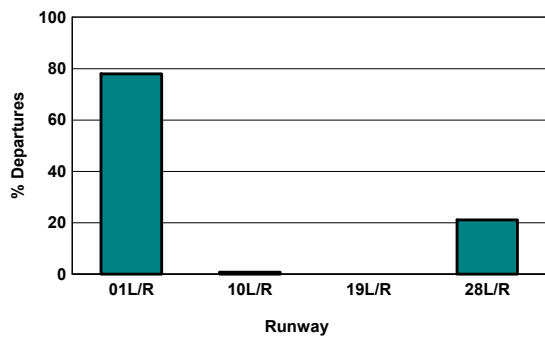
Numbers rounded to nearest whole percentages

Runway Utilization (All Hours)

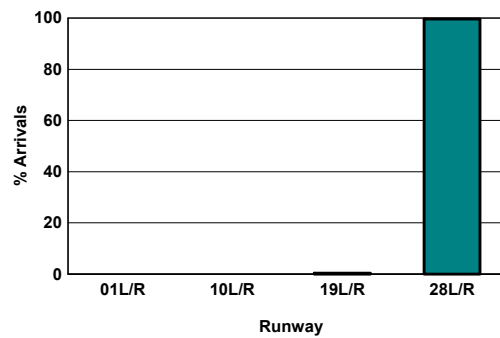
Source: Airport Noise Monitoring System

	Runway Utilization				Total
	01L/R	10L/R	19L/R	28L/R	
Total Monthly Operations					
Departures	13,117	136	0	3,562	16,815
Arrivals	0	0	55	16,780	16,835
Percentage Utilization					
Departures	78.0%	0.8%	0.0%	21.2%	100%
Arrivals	0.0%	0.0%	0.3%	99.7%	100%

Departures (All Hours)



Arrivals (All Hours)



Percentage Departure Utilization



Numbers rounded to nearest whole percentages

Percentage Arrival Utilization



Numbers rounded to nearest whole percentages