



# Airport Director's Report

Presented at the October 13, 2016  
Airport Community Roundtable Meeting

Aircraft Noise Abatement Office  
August 2016



San Francisco  
International  
Airport

Monthly Noise Exceedance Report  
 San Francisco International Airport -- Director's Report  
 Period: August 2016



Airline	Noise Exceedances				Noise Exceedance Quality Rating
	Total Noise Exceedances	Total Operations per Month	Exceedances per 1,000 Operations	Score	
EJA	2	448	4	9.98	
SKW	41	6,356	6	9.98	
AFR	1	124	8	9.97	
BAW	1	123	8	9.97	
KLM	1	79	13	9.95	
VRD	48	3,763	13	9.95	
SCX	3	162	19	9.93	
ACA	16	768	21	9.93	
DAL	59	2,736	22	9.92	
CPZ	20	913	22	9.92	
WOW	1	44	23	9.92	
SWA	72	2,813	26	9.91	
CSN	2	62	32	9.88	
AAL	101	2,907	35	9.88	
FFT	19	508	37	9.87	
ASA	41	1,093	38	9.87	
UAL	482	12,535	38	9.86	
JBU	41	1,004	41	9.85	
XLF	2	26	77	9.73	
ETD	5	62	81	9.71	
HAL	14	123	114	9.59	
WJA	15	124	121	9.57	
VOI	14	106	132	9.53	
NCA	8	53	151	9.46	
TAI	15	97	155	9.45	
AMX	31	192	161	9.42	
EAL	1	6	167	9.40	
CCA	17	96	177	9.37	
FDX	20	90	222	9.21	
SIA	29	124	234	9.16	
CAL	27	105	257	9.08	
CMP	16	62	258	9.08	
GTI	26	93	280	9.00	
AAR	22	72	306	8.91	
AIC	8	25	320	8.86	
JAL	23	62	371	8.68	
EVA	68	140	486	8.27	
CPA	72	144	500	8.21	
ANZ	28	53	528	8.11	
FJI	5	8	625	7.77	
KAL	81	124	653	7.67	
PAL	67	88	761	7.28	
PAC	45	19	2,368	1.54	
QFA	123	51	2,412	1.39	
CKS	70	25	2,800	0.00	
<b>TOTAL</b>	<b>1,803</b>	<b>38,608</b>	<b>15,121</b>		

Source: SFO Noise Abatement Office

**Historical Significant Exceedances Report**  
 San Francisco International Airport -- Director's Report  
 Period: **August 2016**



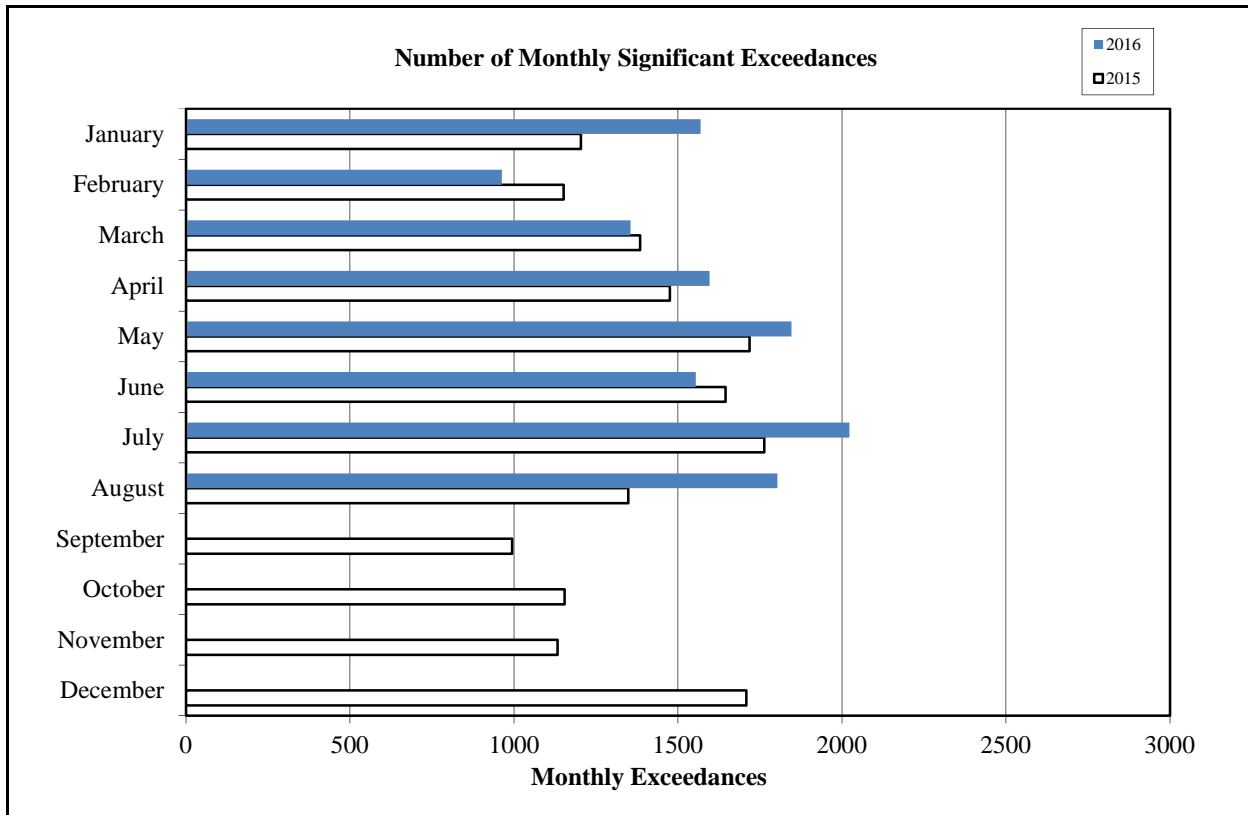
San Francisco International Airport

Month	Number of Monthly Significant Exceedances					Change from Last Year
	2012	2013	2014	2015	2016	
January	1,378	1,428	1,184	1,204	1,569	365
February	1,581	1,176	1,141	1,151	963	-188
March	1,703	1,671	1,345	1,384	1,355	-29
April	1,870	1,910*	1,362	1,475	1,596	121
May	1,912	1,859*	1,515	1,718	1,846	128
June	2,355	1,915	1,740	1,645	1,554	-91
July	2,621	1,647	1,619	1,763***	2,023	260
August	1,823	1,638**	1,460	1,348	1,803	455
September	1,464	1,352	1,111	994		0
October	1,689	1,277	1,055	1,154		0
November	1,421	1,262	1,245	1,133		0
December	1,439	1,160	1,670	1,708		0
<b>Annual Total</b>	<b>21,256</b>	<b>18,295</b>	<b>16,447</b>	<b>16,677</b>	<b>12,709</b>	
<b>Year to Date Trend</b>	<b>21,256</b>	<b>18,295</b>	<b>16,447</b>	<b>16,677</b>	<b>12,709</b>	<b>1021</b>

\* Revised with correct amount of exceedance - 8/5/13

\*\* No data available from Site 7, August 1-26

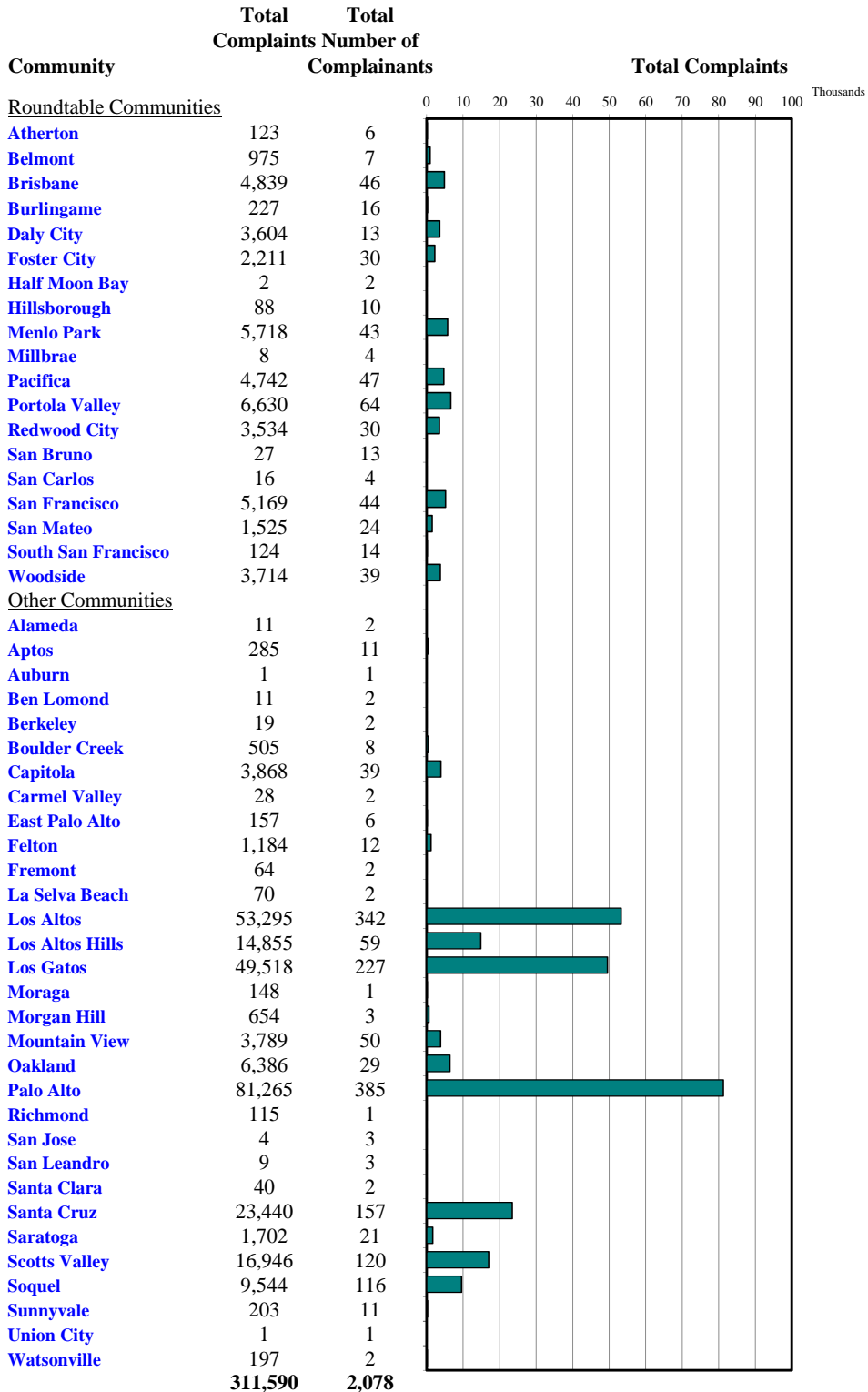
\*\*\*No data available from Site 2 starting July 17





Monthly Calls by Community

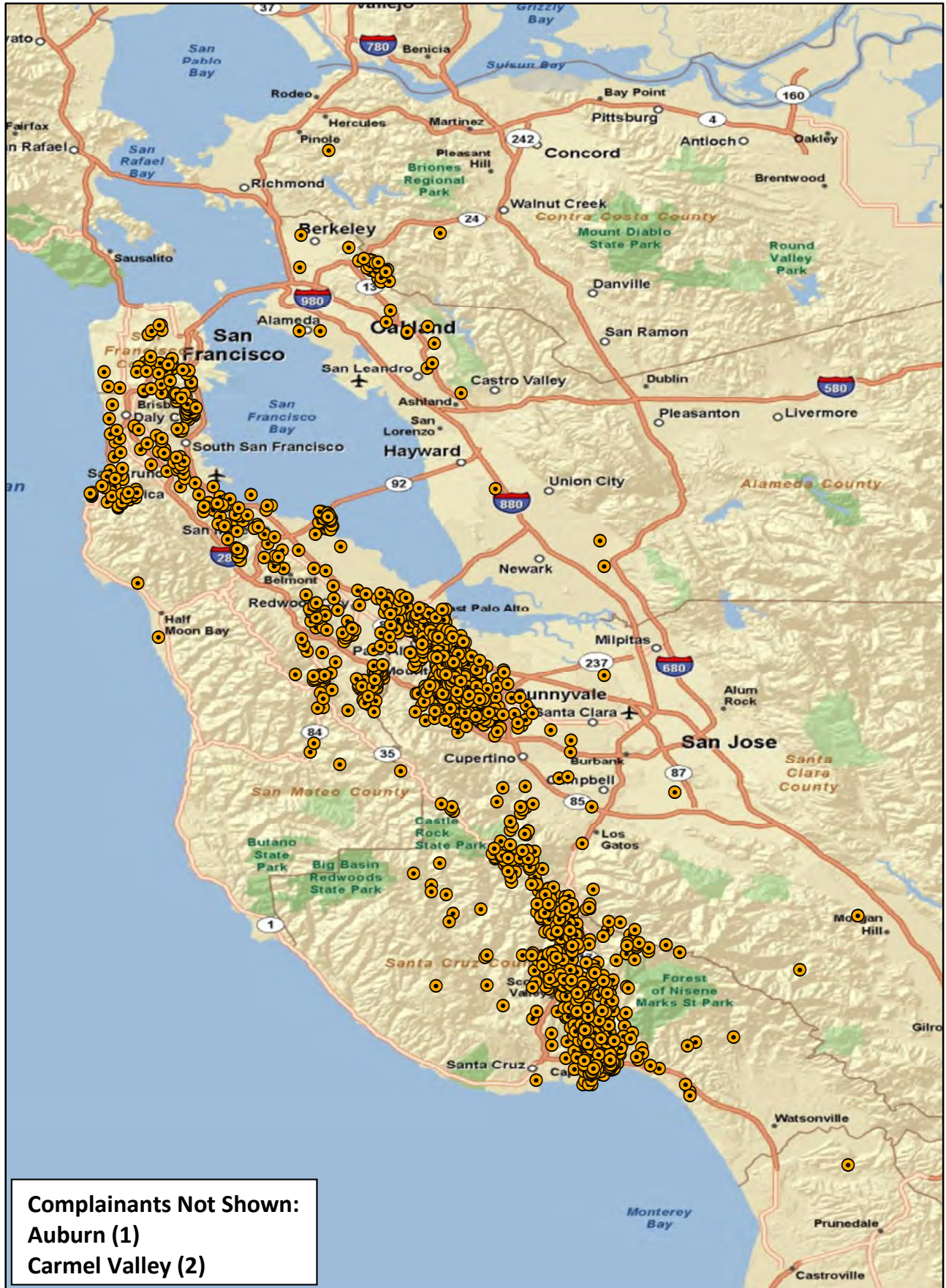
Source: Airport Noise Monitoring System



"Our software vendor's address validation relies on USPS-provided ZIP code look up table and USPS-specified 'default city' values."



# Monthly Noise Complainant Summary Map August 2016



“Our software vendor’s address validation relies on USPS-provided ZIP code look-up table and the USPS-specified ‘default city’ values”

● Complainant Location





**Monthly Nighttime Power Runups Report (85-06-AOB)**

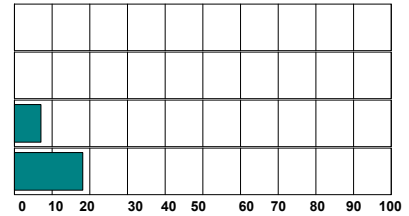
San Francisco International Airport -- Director's Report

Period : **August 2016**

Time of Day : From 10 pm through 7 am



Airline	Code	Number of Runups	Runups Per 1,000 Departures	Percentage of Runups
	CPZ	1	2.2	3%
	DAL	1	0.7	3%
	UAL	8	1.3	28%
	AAL	19	13.1	66%
<b>Total</b>		<b>29</b>		



*A power runup is a procedure used to test an aircraft engine after maintenance is completed.*

*This is done to ensure safe operating standards prior to returning the aircraft to service.*

*The power settings tested range from idle to full power and may vary in duration.*

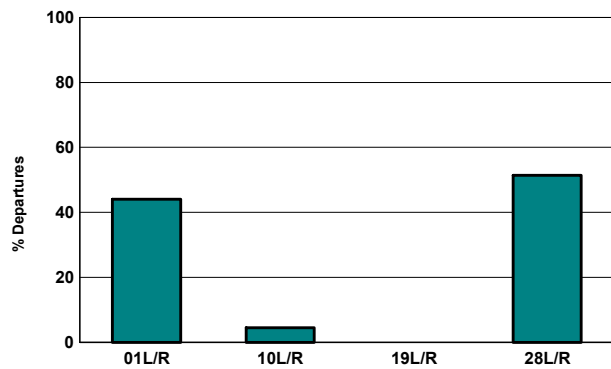


**Runway Utilization (1 am to 6 am)**

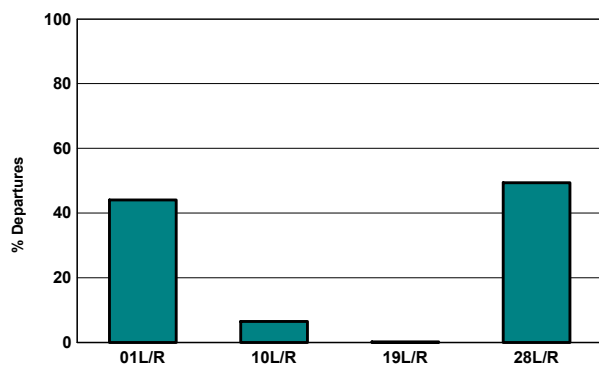
**Monthly Jet Departures**

	Jan	Feb	Mar	Apr	May	Jun	Jul	Aug	Sep	Oct	Nov	Dec	YTD
01L/R	155	149	168	166	167	216	335	265	-	-	-	-	1,621
10L/R	72	14	85	8	3	9	19	27	-	-	-	-	237
19L/R	5	-	-	-	-	-	-	-	-	-	-	-	5
28L/R	85	93	216	250	287	282	298	309	-	-	-	-	1,820
<b>Total</b>	<b>317</b>	<b>256</b>	<b>469</b>	<b>424</b>	<b>457</b>	<b>507</b>	<b>652</b>	<b>601</b>	-	-	-	-	<b>3,683</b>
01L/R	49%	58%	36%	39%	37%	43%	51%	44%	0%	0%	0%	0%	44%
10L/R	23%	5%	18%	2%	1%	2%	3%	4%	0%	0%	0%	0%	6%
19L/R	2%	0%	0%	0%	0%	0%	0%	0%	0%	0%	0%	0%	0%
28L/R	27%	36%	46%	59%	63%	56%	46%	51%	0%	0%	0%	0%	49%

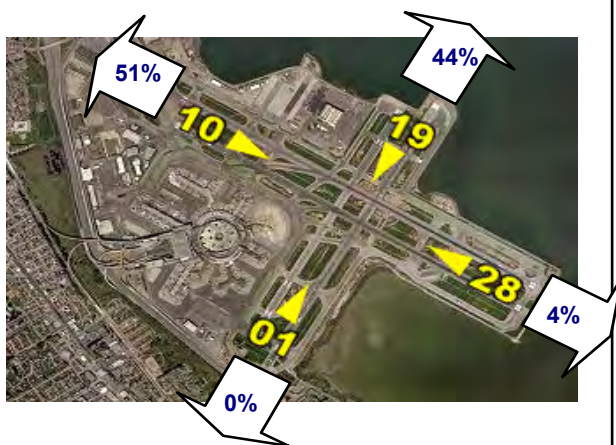
**Current Month (1 am to 6 am)**



**Year-to-Date (1am to 6 am)**

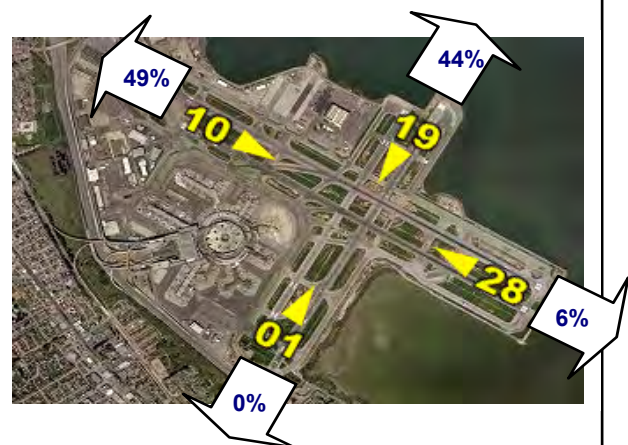


**Current Month (1 am to 6 am)**



Numbers rounded to nearest whole percentages

**Year-to-Date (1am to 6am)**



Numbers rounded to nearest whole percentages

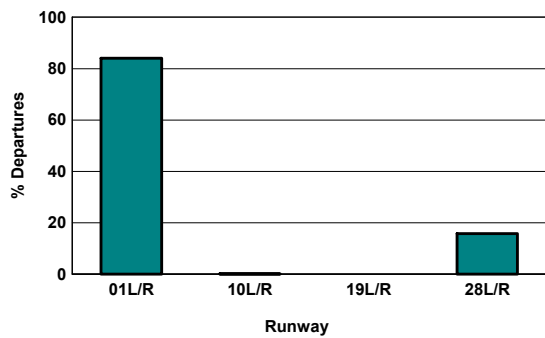


**Runway Utilization (All Hours)**

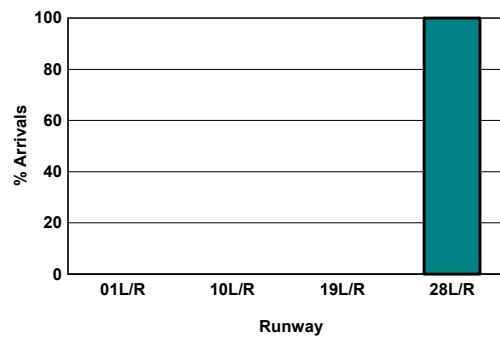
Source: Airport Noise Monitoring System

	Runway Utilization				Total
	01L/R	10L/R	19L/R	28L/R	
<b>Total Monthly Operations</b>					
Departures	15,811	31	0	2,968	18,810
Arrivals	0	0	0	18,124	18,124
<b>Percentage Utilization</b>					
Departures	84.1%	0.2%	0.0%	15.8%	100%
Arrivals	0.0%	0.0%	0.0%	100.0%	100%

**Departures (All Hours)**



**Arrivals (All Hours)**



**Percentage Departure Utilization**



Numbers rounded to nearest whole percentages

**Percentage Arrival Utilization**



Numbers rounded to nearest whole percentages