



Airport Director's Report

Presented at the October 13, 2016
Airport Community Roundtable Meeting

Aircraft Noise Abatement Office
July 2016



San Francisco
International
Airport



Airline	Noise Exceedances				Noise Exceedance Quality Rating
	Total Noise Exceedances	Total Operations per Month	Exceedances per 1,000 Operations	Score	
DLH	1	124	8	9.97	
SKW	54	6,216	9	9.97	
ANA	1	62	16	9.94	
SAS	1	61	16	9.94	
THY	1	55	18	9.93	
VRD	68	3,690	18	9.93	
DAL	55	2,757	20	9.92	
BER	1	44	23	9.91	
ASA	25	1,091	23	9.91	
SCX	4	173	23	9.91	
WOW	1	43	23	9.91	
FFT	12	495	24	9.91	
CPZ	20	823	24	9.91	
ACA	19	769	25	9.91	
JBU	25	957	26	9.90	
SWR	3	114	26	9.90	
VIR	3	112	27	9.90	
ETD	2	62	32	9.88	
XLF	1	25	40	9.85	
UAL	513	11,956	43	9.84	
SWA	119	2,638	45	9.83	
AAL	158	2,959	53	9.80	
AFR	8	123	65	9.75	
WJA	16	123	130	9.51	
HAL	19	126	151	9.43	
VOI	16	105	152	9.43	
TAI	15	94	160	9.40	
FDX	15	83	181	9.32	
AMX	38	204	186	9.30	
NCA	15	54	278	8.95	
CMP	12	43	279	8.95	
AIC	9	28	321	8.79	
GTI	28	84	333	8.74	
CAL	34	99	343	8.71	
SIA	46	123	374	8.59	
EVA	52	132	394	8.52	
JAL	27	62	435	8.36	
FJI	10	19	526	8.02	
CPA	80	149	537	7.98	
AAR	63	88	716	7.30	
KAL	96	130	738	7.22	
PAL	70	88	795	7.00	
ANZ	55	61	902	6.60	
CKS	66	28	2,357	1.12	
QFA	146	55	2,655	0.00	
TOTAL	2,023	37,327	13,574		

Source: SFO Noise Abatement Office

Historical Significant Exceedances Report
 San Francisco International Airport -- Director's Report
 Period: **July 2016**



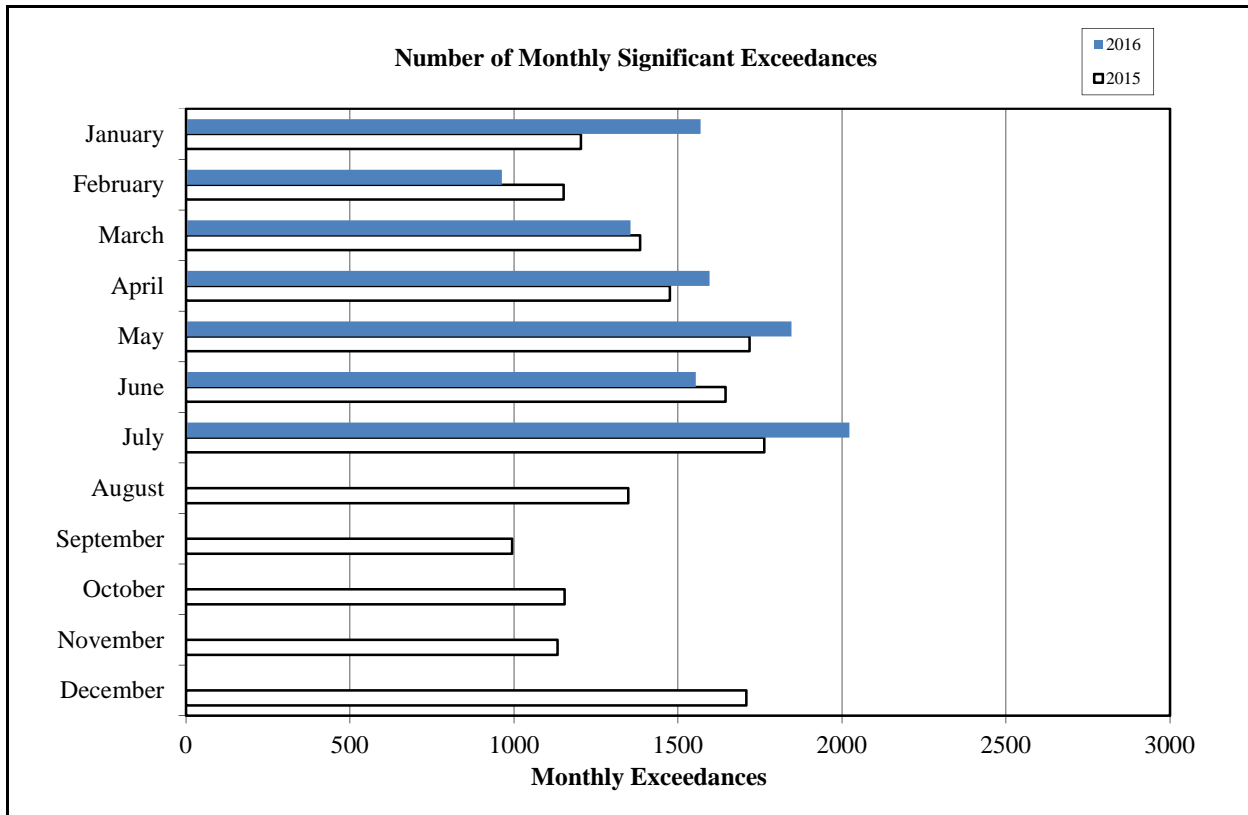
San Francisco International Airport

Month	Number of Monthly Significant Exceedances					Change from Last Year
	2012	2013	2014	2015	2016	
January	1,378	1,428	1,184	1,204	1,569	365
February	1,581	1,176	1,141	1,151	963	-188
March	1,703	1,671	1,345	1,384	1,355	-29
April	1,870	1,910*	1,362	1,475	1,596	121
May	1,912	1,859*	1,515	1,718	1,846	128
June	2,355	1,915	1,740	1,645	1,554	-91
July	2,621	1,647	1,619	1,763***	2,023	260
August	1,823	1,638**	1,460	1,348		0
September	1,464	1,352	1,111	994		0
October	1,689	1,277	1,055	1,154		0
November	1,421	1,262	1,245	1,133		0
December	1,439	1,160	1,670	1,708		0
Annual Total	21,256	18,295	16,447	16,677	10,906	
Year to Date Trend	21,256	18,295	16,447	16,677	10,906	566

* Revised with correct amount of exceedance - 8/5/13

** No data available from Site 7, August 1-26

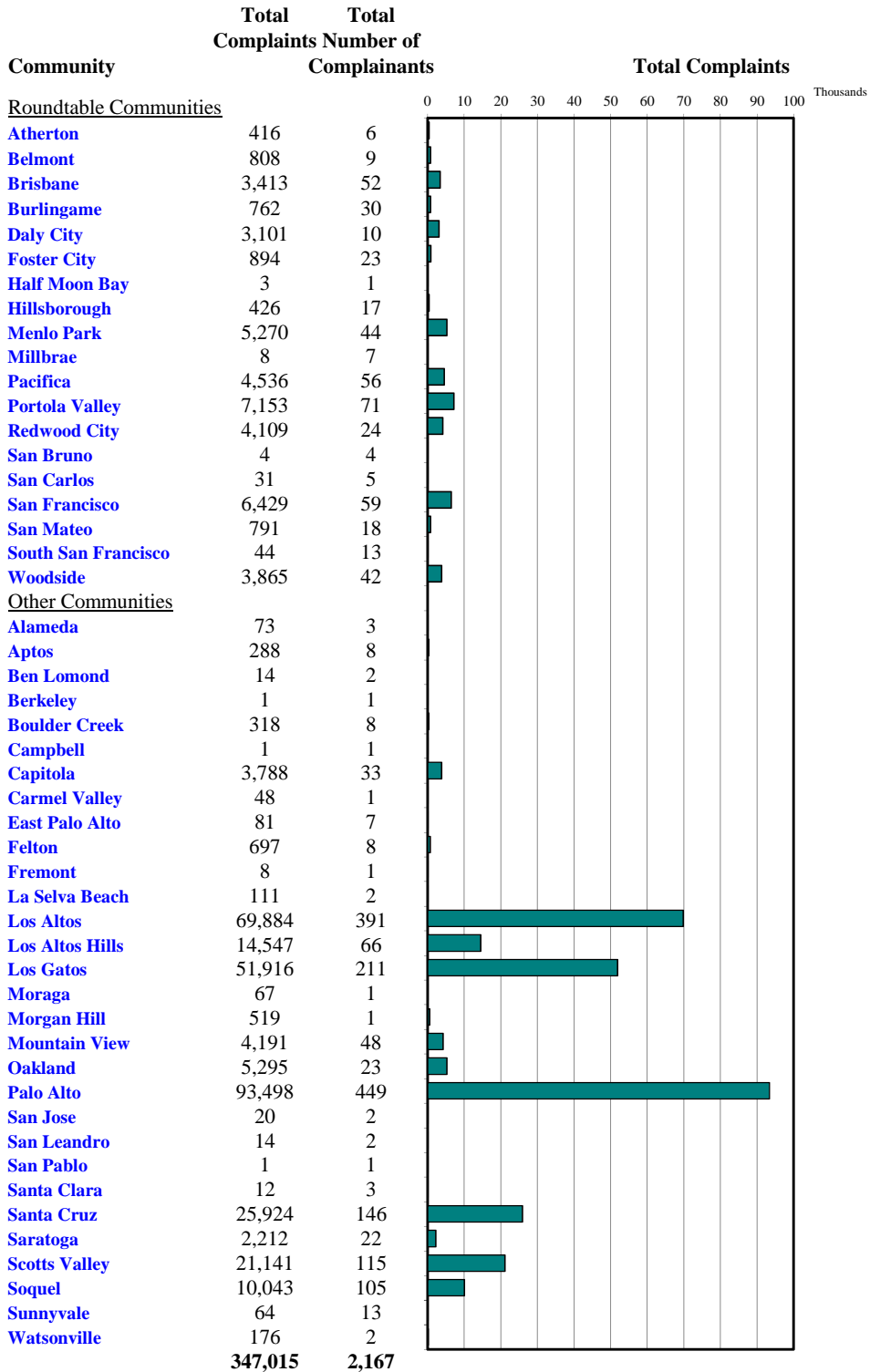
***No data available from Site 2 starting July 17





Monthly Calls by Community

Source: Airport Noise Monitoring System



"Our software vendor's address validation relies on USPS-provided ZIP code look up table and USPS-specified 'default city' values."

Monthly Noise Complainant Summary Map July 2016



"Our software vendor's address validation relies on USPS-provided ZIP code look-up table and the USPS-specified 'default city' values"

● Caller Location



Monthly Nighttime Power Runups Report (85-06-AOB)

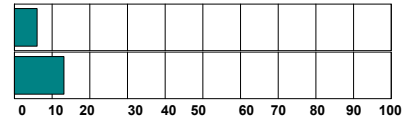
San Francisco International Airport -- Director's Report

Period : **July 2016**

Time of Day : From 10 pm through 7 am



Airline	Code	Number of Runups	Runups Per 1,000 Departures	Percentage of Runups
 UNITED	UAL	7	1.2	33%
 American Airlines	AAL	14	9.5	67%
Total		21		



A power runup is a procedure used to test an aircraft engine after maintenance is completed. This is done to ensure safe operating standards prior to returning the aircraft to service. The power settings tested range from idle to full power and may vary in duration.

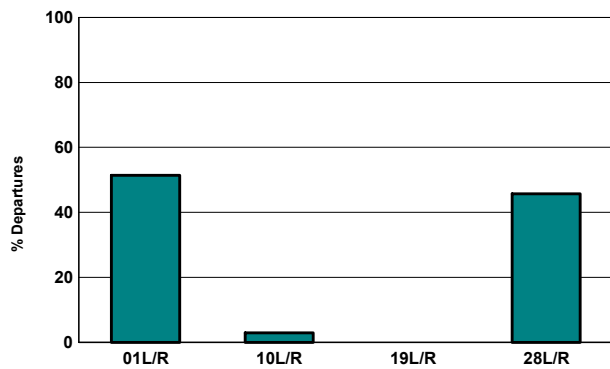


Runway Utilization (1 am to 6 am)

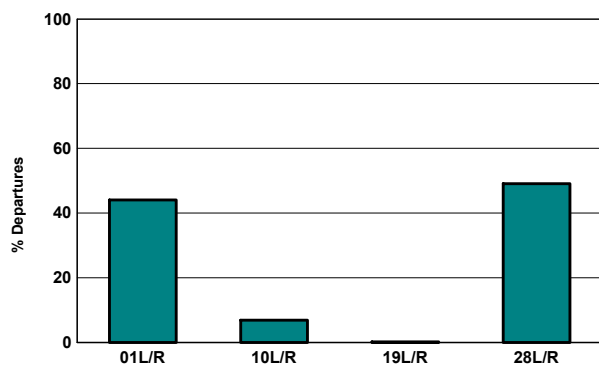
Monthly Jet Departures

	Jan	Feb	Mar	Apr	May	Jun	Jul	Aug	Sep	Oct	Nov	Dec	YTD
01L/R	155	149	168	166	167	216	335	-	-	-	-	-	1,356
10L/R	72	14	85	8	3	9	19	-	-	-	-	-	210
19L/R	5	-	-	-	-	-	-	-	-	-	-	-	5
28L/R	85	93	216	250	287	282	298	-	-	-	-	-	1,511
Total	317	256	469	424	457	507	652	-	-	-	-	-	3,082
01L/R	49%	58%	36%	39%	37%	43%	51%	0%	0%	0%	0%	0%	44%
10L/R	23%	5%	18%	2%	1%	2%	3%	0%	0%	0%	0%	0%	7%
19L/R	2%	0%	0%	0%	0%	0%	0%	0%	0%	0%	0%	0%	0%
28L/R	27%	36%	46%	59%	63%	56%	46%	0%	0%	0%	0%	0%	49%

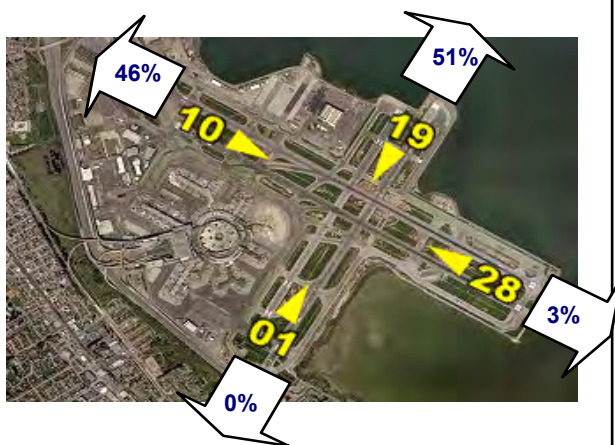
Current Month (1 am to 6 am)



Year-to-Date (1am to 6 am)

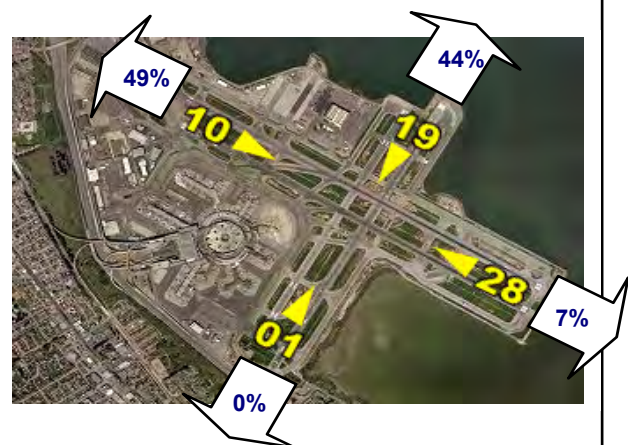


Current Month (1 am to 6 am)



Numbers rounded to nearest whole percentages

Year-to-Date (1am to 6am)



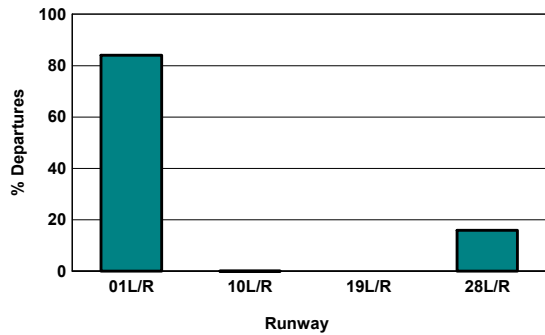
Numbers rounded to nearest whole percentages

Runway Utilization (All Hours)

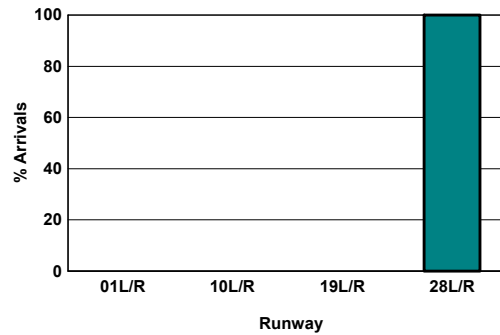
Source: Airport Noise Monitoring System

	Runway Utilization				Total
	01L/R	10L/R	19L/R	28L/R	
Total Monthly Operations					
Departures	15,872	20	0	3,003	18,895
Arrivals	0	0	0	18,768	18,768
Percentage Utilization					
Departures	84.0%	0.1%	0.0%	15.9%	100%
Arrivals	0.0%	0.0%	0.0%	100.0%	100%

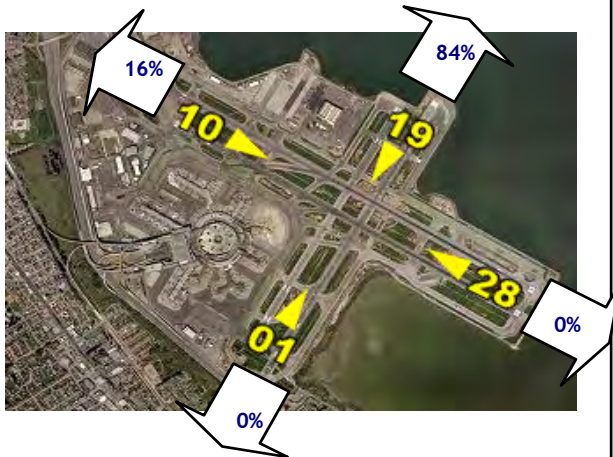
Departures (All Hours)



Arrivals (All Hours)

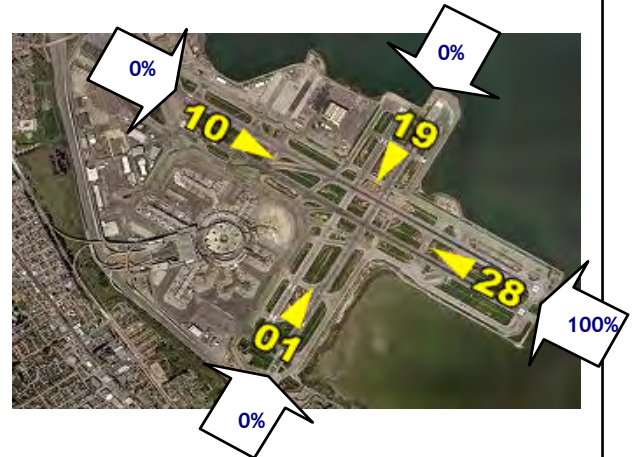


Percentage Departure Utilization



Numbers rounded to nearest whole percentages

Percentage Arrival Utilization



Numbers rounded to nearest whole percentages