



# Airport Director's Report

Presented at the June 27, 2016  
Airport Community Roundtable Meeting

Aircraft Noise Abatement Office  
April 2016



San Francisco  
International  
Airport

Monthly Noise Exceedance Report

San Francisco International Airport -- Director's Report

Period: April 2016



Airline	Noise Exceedances				Noise Exceedance Quality Rating
	Total Noise Exceedances	Total Operations per Month	Exceedances per 1,000 Operations	Score	
EJA	1	347	3	9.99	
SKW	26	6,380	4	9.98	
SCX	1	89	11	9.96	
AFR	1	59	17	9.94	
DLH	2	118	17	9.94	
THY	1	59	17	9.94	
CPZ	16	888	18	9.93	
FFT	8	415	19	9.93	
VRD	68	3,467	20	9.93	
DAL	48	2,191	22	9.92	
ASA	36	1,085	33	9.88	
ACA	16	433	37	9.86	
AAL	97	2,574	38	9.86	
SWA	101	2,576	39	9.85	
UAL	390	9,790	40	9.85	
JBU	42	972	43	9.84	
SWR	3	59	51	9.81	
AMX	8	157	51	9.81	
EAL	1	10	100	9.63	
CMP	6	59	102	9.62	
HAL	16	120	133	9.50	
TAI	12	86	140	9.48	
ETD	10	60	167	9.38	
AIC	5	26	192	9.28	
FDX	20	90	222	9.17	
GTI	21	84	250	9.07	
SIA	30	118	254	9.05	
JAL	19	60	317	8.82	
NCA	17	52	327	8.78	
CAL	40	112	357	8.67	
CPA	52	137	380	8.58	
EVA	49	125	392	8.54	
ANZ	30	60	500	8.13	
PAL	38	60	633	7.64	
KAL	89	121	736	7.25	
AAR	78	88	886	6.69	
QFA	123	50	2,460	0.82	
CKS	75	28	2,679	0.00	
<b>TOTAL</b>	<b>1,596</b>	<b>33,205</b>	<b>11,706</b>		

Source: SFO Noise Abatement Office

**Historical Significant Exceedances Report**  
 San Francisco International Airport -- Director's Report  
 Period: **April 2016**



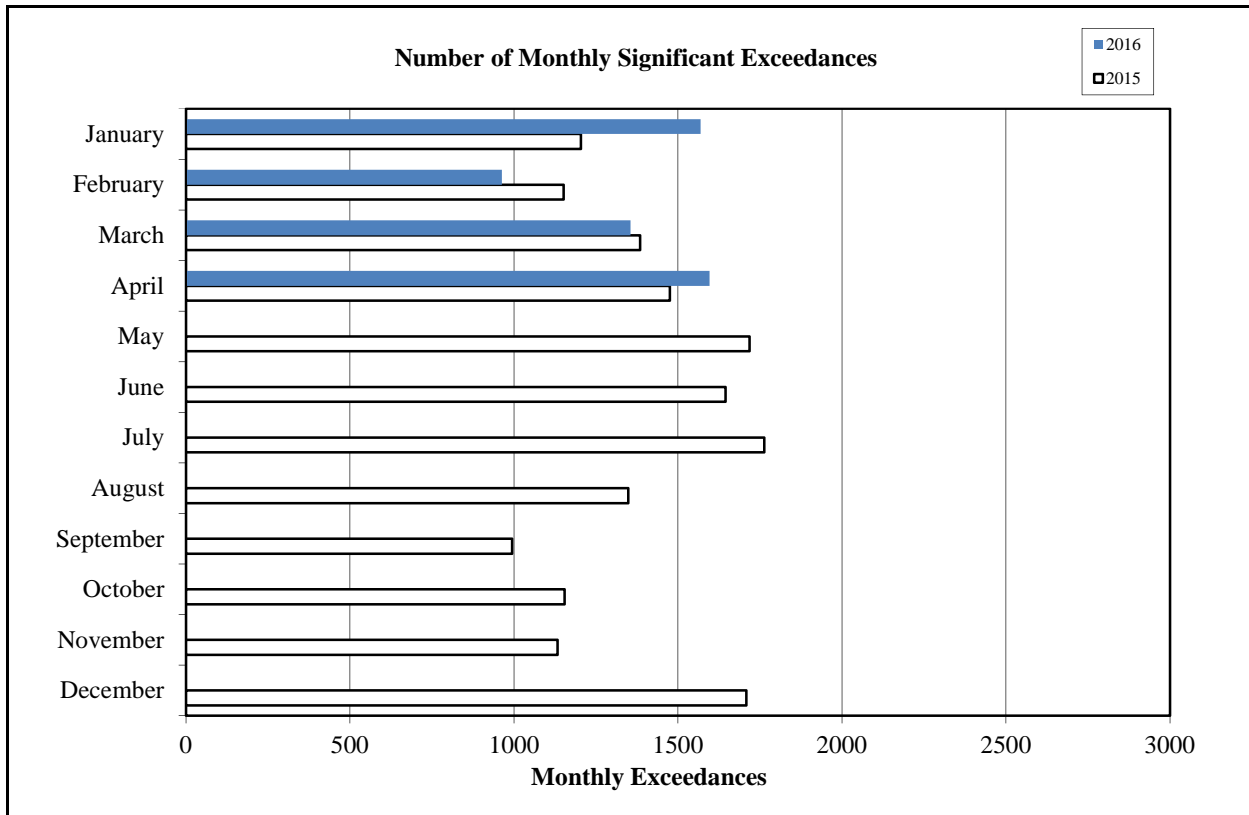
San Francisco International Airport

Month	Number of Monthly Significant Exceedances					Change from Last Year
	2012	2013	2014	2015	2016	
January	1,378	1,428	1,184	1,204	1,569	365
February	1,581	1,176	1,141	1,151	963	-188
March	1,703	1,671	1,345	1,384	1,355	-29
April	1,870	1,910*	1,362	1,475	1,596	121
May	1,912	1,859*	1,515	1,718		0
June	2,355	1,915	1,740	1,645		0
July	2,621	1,647	1,619	1,763***		0
August	1,823	1,638**	1,460	1,348		0
September	1,464	1,352	1,111	994		0
October	1,689	1,277	1,055	1,154		0
November	1,421	1,262	1,245	1,133		0
December	1,439	1,160	1,670	1,708		0
<b>Annual Total</b>	<b>21,256</b>	<b>18,295</b>	<b>16,447</b>	<b>16,677</b>	<b>5,483</b>	
<b>Year to Date Trend</b>	<b>21,256</b>	<b>18,295</b>	<b>16,447</b>	<b>16,677</b>	<b>5,483</b>	<b>269</b>

\* Revised with correct amount of exceedance - 8/5/13

\*\* No data available from Site 7, August 1-26

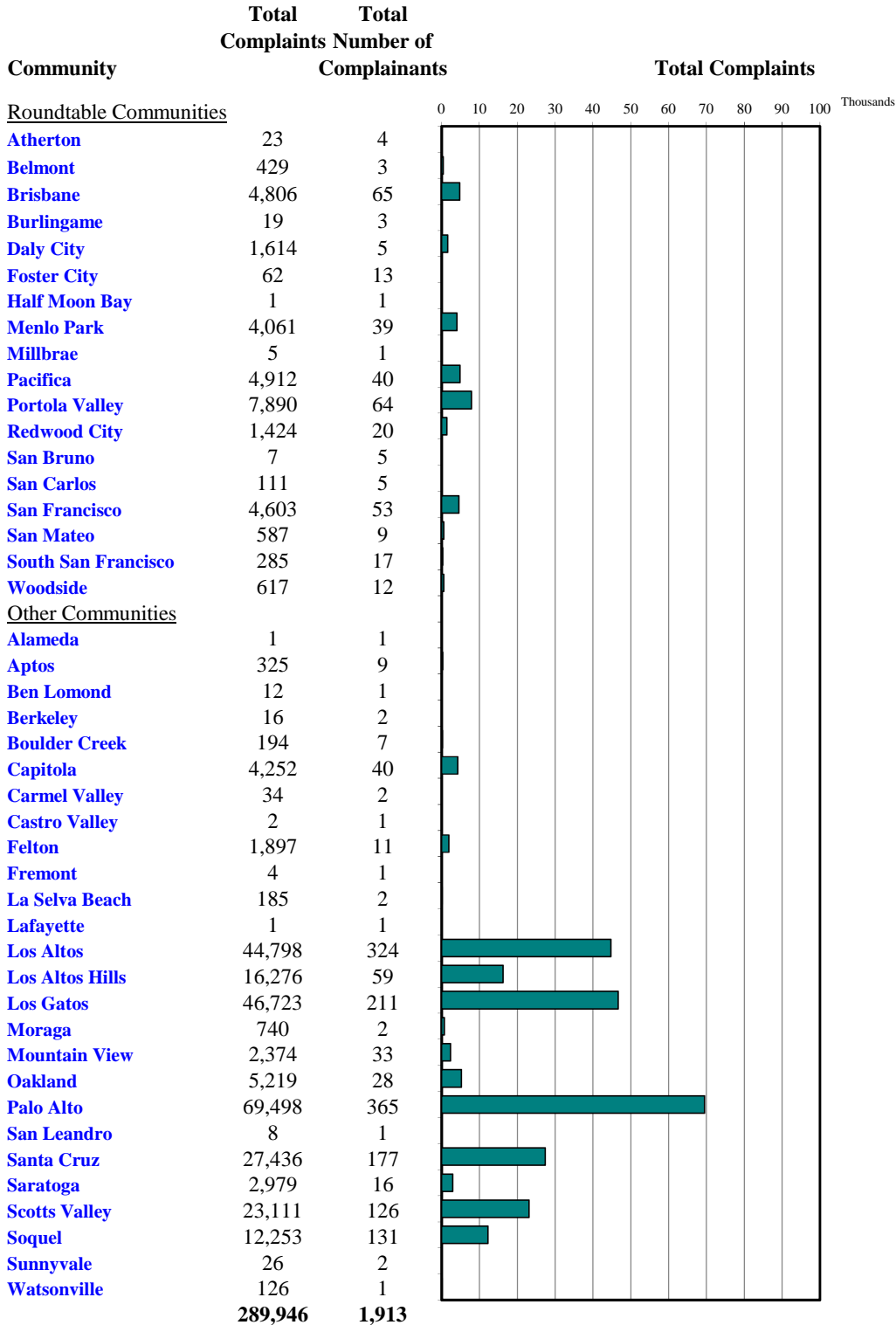
\*\*\*No data available from Site 2 starting July 17





Monthly Calls by Community

Source: Airport Noise Monitoring System



"Our software vendor's address validation relies on USPS-provided ZIP code look up table and USPS-specified 'default city' values."

# Monthly Noise Complainant Summary Map April 2016



"Our software vendor's address validation relies on USPS-provided ZIP code look-up table and the USPS-specified 'default city' values"




**Monthly Nighttime Power Runups Report (85-06-AOB)**

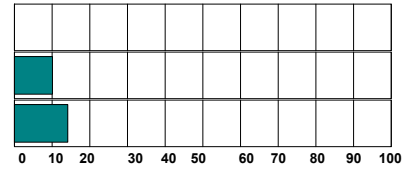
San Francisco International Airport -- Director's Report

Period : **April 2016**

Time of Day : From 10 pm through 7 am



Airline	Code	Number of Runups	Runups Per 1,000 Departures	Percentage of Runups
 DELTA	DAL	1	0.9	4%
 UNITED	UAL	11	2.2	41%
 American Airlines	AAL	15	11.7	56%
<b>Total</b>		<b>27</b>		



*A power runup is a procedure used to test an aircraft engine after maintenance is completed.*

*This is done to ensure safe operating standards prior to returning the aircraft to service.*

*The power settings tested range from idle to full power and may vary in duration.*

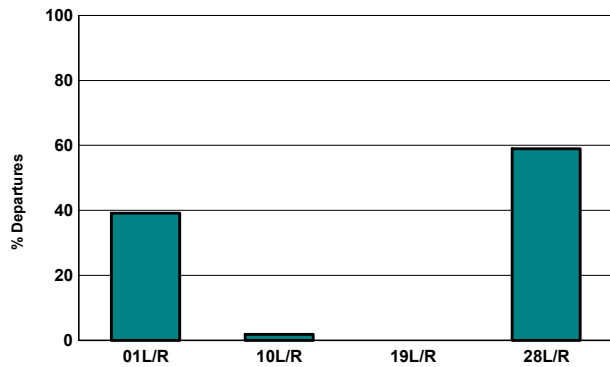


**Runway Utilization (1 am to 6 am)**

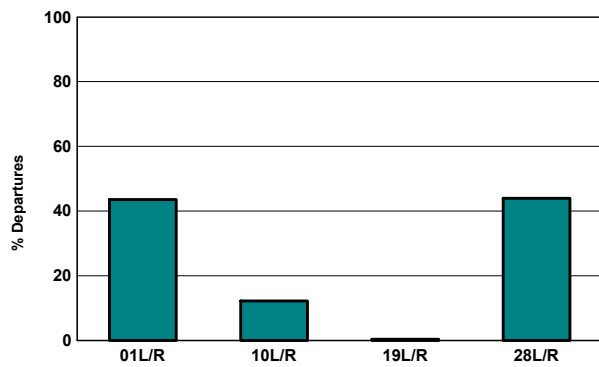
**Monthly Jet Departures**

	Jan	Feb	Mar	Apr	May	Jun	Jul	Aug	Sep	Oct	Nov	Dec	YTD
01L/R	155	149	168	166	-	-	-	-	-	-	-	-	638
10L/R	72	14	85	8	-	-	-	-	-	-	-	-	179
19L/R	5	-	-	-	-	-	-	-	-	-	-	-	5
28L/R	85	93	216	250	-	-	-	-	-	-	-	-	644
<b>Total</b>	<b>317</b>	<b>256</b>	<b>469</b>	<b>424</b>	-	-	-	-	-	-	-	-	<b>1,466</b>
01L/R	49%	58%	36%	39%	0%	0%	0%	0%	0%	0%	0%	0%	44%
10L/R	23%	5%	18%	2%	0%	0%	0%	0%	0%	0%	0%	0%	12%
19L/R	2%	0%	0%	0%	0%	0%	0%	0%	0%	0%	0%	0%	0%
28L/R	27%	36%	46%	59%	0%	0%	0%	0%	0%	0%	0%	0%	44%

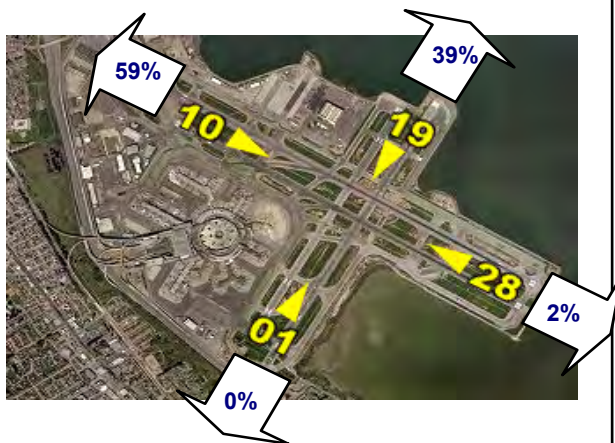
**Current Month (1 am to 6 am)**



**Year-to-Date (1am to 6 am)**

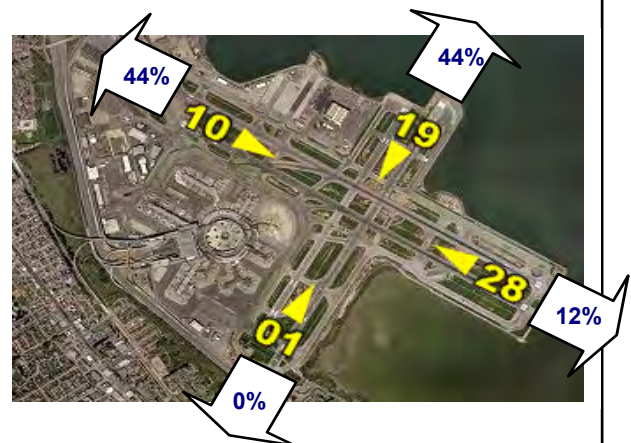


**Current Month (1 am to 6 am)**



Numbers rounded to nearest whole percentages

**Year-to-Date (1am to 6am)**



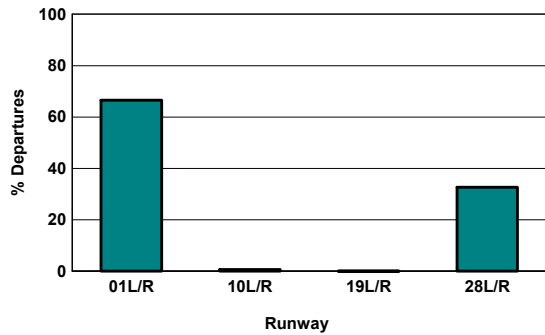
Numbers rounded to nearest whole percentages

**Runway Utilization (All Hours)**

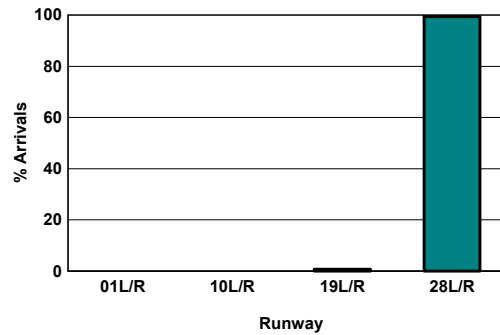
Source: Airport Noise Monitoring System

	Runway Utilization				Total
	01L/R	10L/R	19L/R	28L/R	
<b>Total Monthly Operations</b>					
Departures	11,234	125	7	5,514	16,880
Arrivals	0	0	114	16,753	16,867
<b>Percentage Utilization</b>					
Departures	66.6%	0.7%	0.0%	32.7%	100%
Arrivals	0.0%	0.0%	0.7%	99.3%	100%

**Departures (All Hours)**



**Arrivals (All Hours)**

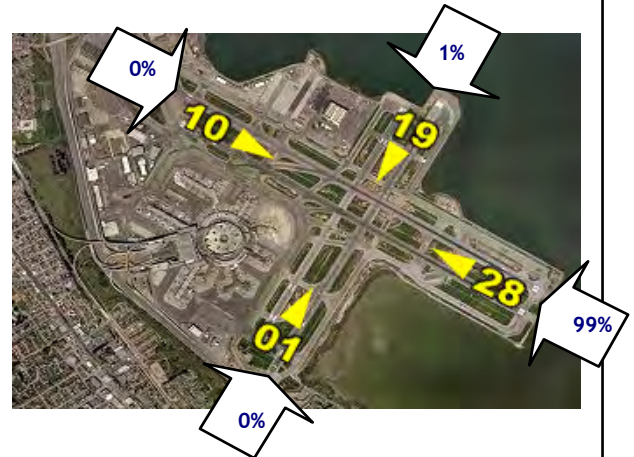


**Percentage Departure Utilization**



Numbers rounded to nearest whole percentages

**Percentage Arrival Utilization**



Numbers rounded to nearest whole percentages