



Airport Director's Report

Presented at the June 1, 2016
Airport Community Roundtable Meeting

Aircraft Noise Abatement Office
March 2016



San Francisco
International
Airport

Airline	Noise Exceedances				Noise Exceedance Quality Rating
	Total Noise Exceedances	Total Operations per Month	Exceedances per 1,000 Operations	Score	
EJA	1	420	2	9.98	
SKW	23	6,733	3	9.97	
ANZ	1	62	16	9.85	
JAL	1	62	16	9.85	
SAS	1	62	16	9.85	
DLH	2	123	16	9.85	
FFT	9	387	23	9.79	
DAL	68	2,349	29	9.74	
VRD	97	3,299	29	9.73	
SWR	2	61	33	9.70	
UAE	2	61	33	9.70	
VIR	4	112	36	9.68	
UAL	382	9,689	39	9.64	
CPZ	26	651	40	9.64	
ASA	45	1,062	42	9.62	
SWA	112	2,551	44	9.60	
AAL	115	2,601	44	9.60	
CMP	3	62	48	9.56	
JBU	52	999	52	9.53	
ACA	26	463	56	9.49	
SIA	7	124	56	9.49	
CAL	6	105	57	9.48	
SCX	4	64	63	9.44	
BAW	11	124	89	9.20	
EVA	15	135	111	9.00	
HAL	14	124	113	8.98	
CPA	17	150	113	8.98	
PAL	8	62	129	8.83	
AIC	4	26	154	8.61	
FDX	16	92	174	8.43	
ETD	11	62	177	8.40	
GTI	22	92	239	7.84	
TAI	22	87	253	7.72	
NCA	19	54	352	6.82	
AAR	38	93	409	6.31	
KAL	61	124	492	5.56	
AMX	22	44	500	5.48	
QFA	55	54	1,019	0.80	
CKS	31	28	1,107	0.00	
TOTAL	1,355	33,453	6,226		

Source: SFO Noise Abatement Office

Historical Significant Exceedances Report
 San Francisco International Airport -- Director's Report
 Period: **March 2016**



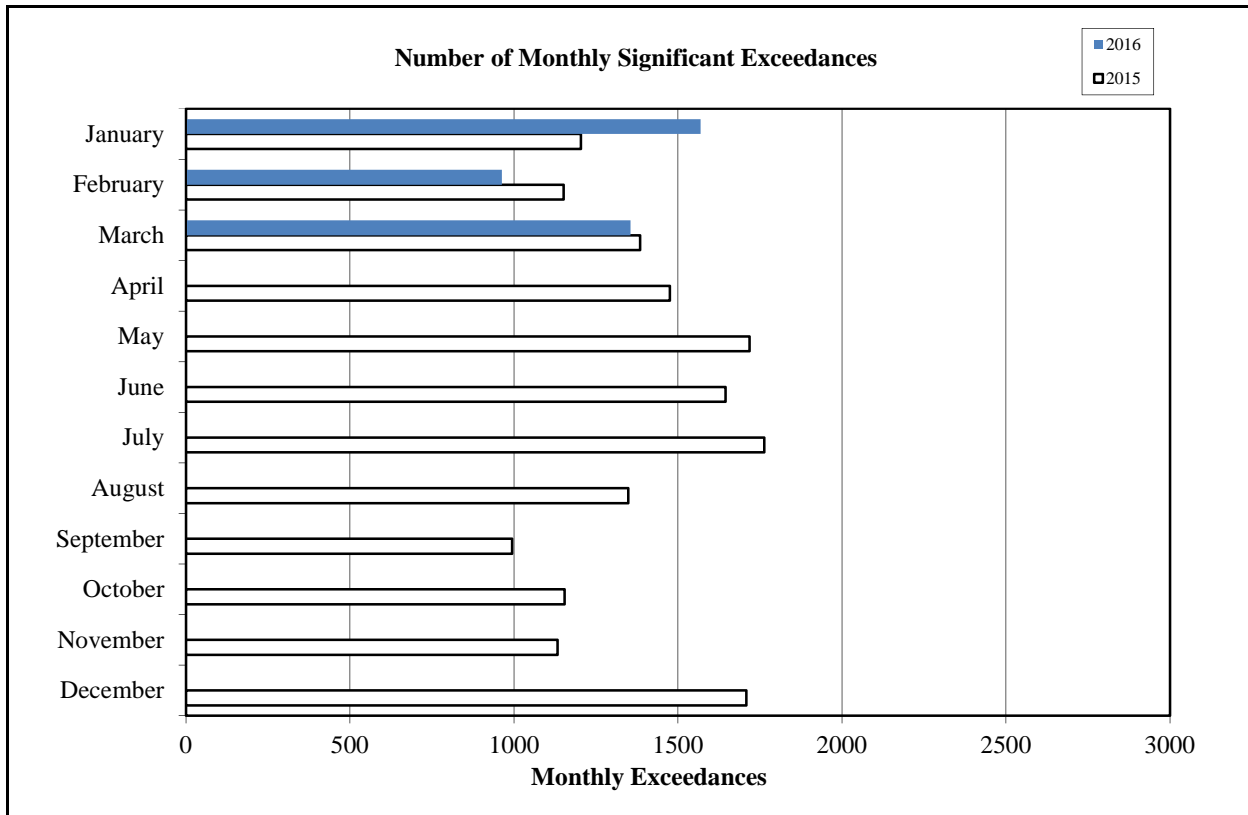
San Francisco International Airport

Month	Number of Monthly Significant Exceedances					Change from Last Year
	2012	2013	2014	2015	2016	
January	1,378	1,428	1,184	1,204	1,569	365
February	1,581	1,176	1,141	1,151	963	-188
March	1,703	1,671	1,345	1,384	1,355	-29
April	1,870	1,910*	1,362	1,475		0
May	1,912	1,859*	1,515	1,718		0
June	2,355	1,915	1,740	1,645		0
July	2,621	1,647	1,619	1,763***		0
August	1,823	1,638**	1,460	1,348		0
September	1,464	1,352	1,111	994		0
October	1,689	1,277	1,055	1,154		0
November	1,421	1,262	1,245	1,133		0
December	1,439	1,160	1,670	1,708		0
Annual Total	21,256	18,295	16,447	16,677	3,887	
Year to Date Trend	21,256	18,295	16,447	16,677	3,887	148

* Revised with correct amount of exceedance - 8/5/13

** No data available from Site 7, August 1-26

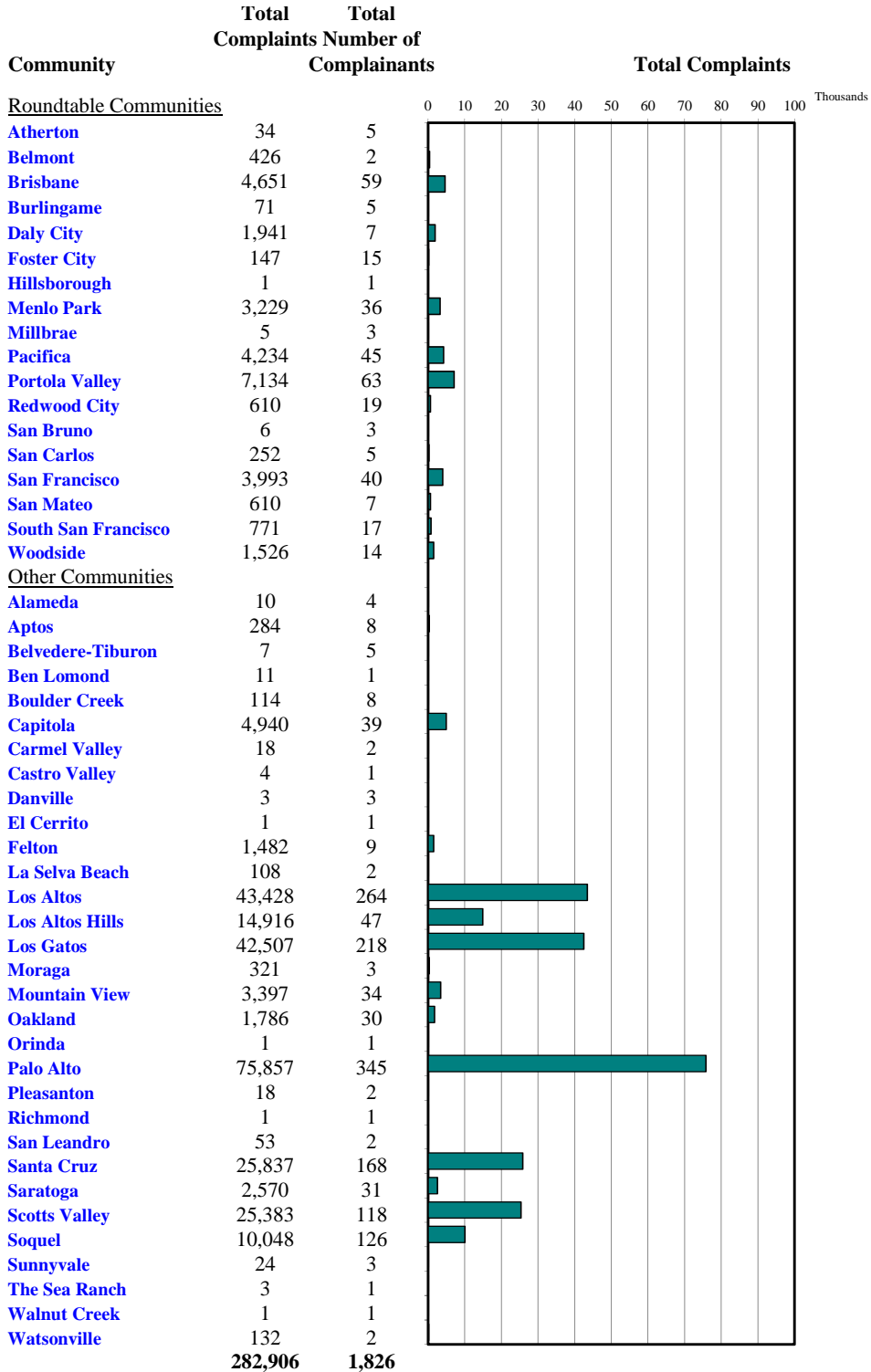
***No data available from Site 2 starting July 17





Monthly Calls by Community

Source: Airport Noise Monitoring System



"Our software vendor's address validation relies on USPS-provided ZIP code look up table and USPS-specified 'default city' values."

Monthly Noise Complainant Summary Map March 2016



"Our software vendor's address validation relies on USPS-provided ZIP code look up table and USPS-specified 'default city' values."

● Complainant Locations




Monthly Nighttime Power Runups Report (85-06-AOB)

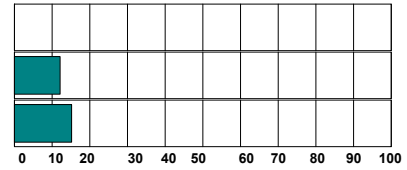
San Francisco International Airport -- Director's Report

Period : **March 2016**

Time of Day : From 10 pm through 7 am



Airline	Code	Number of Runups	Runups Per 1,000 Departures	Percentage of Runups
 DELTA	DAL	1	0.8	3%
 American Airlines	AAL	13	10.0	43%
 UNITED	UAL	16	3.3	53%
Total		30		



A power runup is a procedure used to test an aircraft engine after maintenance is completed.

This is done to ensure safe operating standards prior to returning the aircraft to service.

The power settings tested range from idle to full power and may vary in duration.

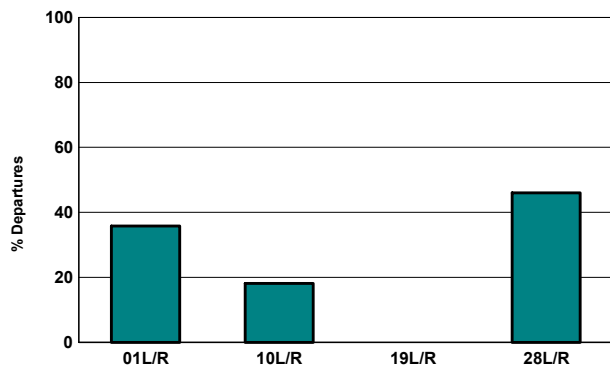


Runway Utilization (1 am to 6 am)

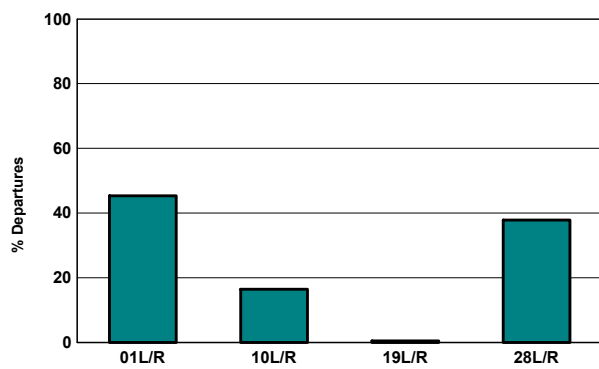
Monthly Jet Departures

	Jan	Feb	Mar	Apr	May	Jun	Jul	Aug	Sep	Oct	Nov	Dec	YTD
01L/R	155	149	168	-	-	-	-	-	-	-	-	-	472
10L/R	72	14	85	-	-	-	-	-	-	-	-	-	171
19L/R	5	-	-	-	-	-	-	-	-	-	-	-	5
28L/R	85	93	216	-	-	-	-	-	-	-	-	-	394
Total	317	256	469	-	-	-	-	-	-	-	-	-	1,042
01L/R	49%	58%	36%	0%	0%	0%	0%	0%	0%	0%	0%	0%	45%
10L/R	23%	5%	18%	0%	0%	0%	0%	0%	0%	0%	0%	0%	16%
19L/R	2%	0%	0%	0%	0%	0%	0%	0%	0%	0%	0%	0%	0%
28L/R	27%	36%	46%	0%	0%	0%	0%	0%	0%	0%	0%	0%	38%

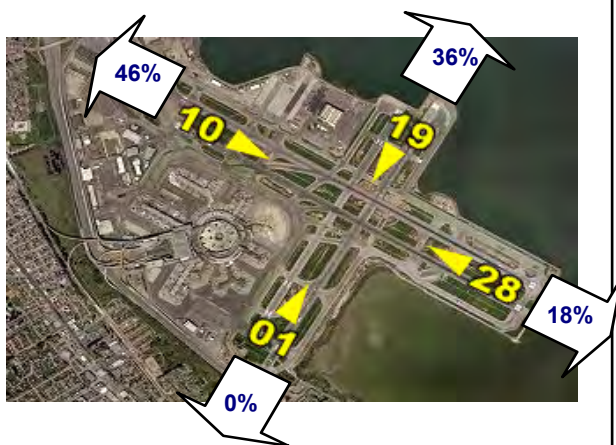
Current Month (1 am to 6 am)



Year-to-Date (1am to 6 am)

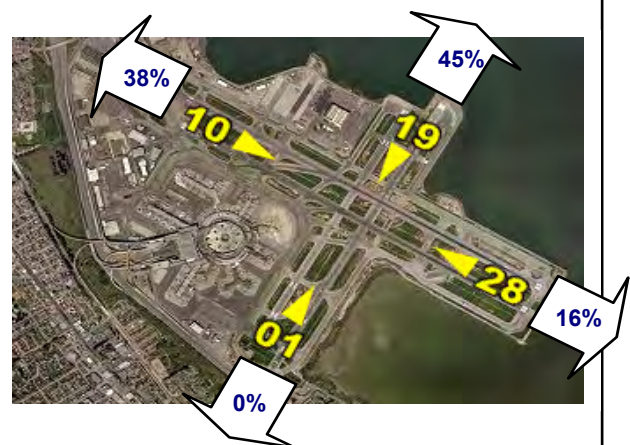


Current Month (1 am to 6 am)



Numbers rounded to nearest whole percentages

Year-to-Date (1am to 6am)



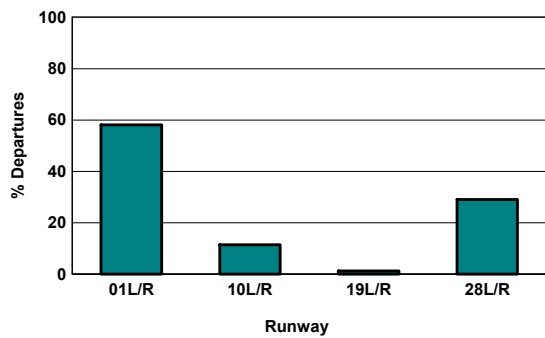
Numbers rounded to nearest whole percentages

Runway Utilization (All Hours)

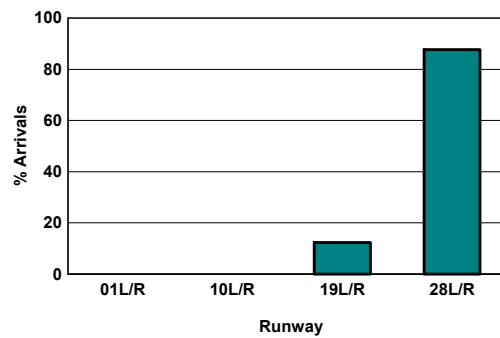
Source: Airport Noise Monitoring System

	Runway Utilization				Total
	01L/R	10L/R	19L/R	28L/R	
Total Monthly Operations					
Departures	9,846	1,949	222	4,915	16,932
Arrivals	0	0	2,074	14,813	16,887
Percentage Utilization					
Departures	58.2%	11.5%	1.3%	29.0%	100%
Arrivals	0.0%	0.0%	12.3%	87.7%	100%

Departures (All Hours)



Arrivals (All Hours)



Percentage Departure Utilization



Numbers rounded to nearest whole percentages

Percentage Arrival Utilization



Numbers rounded to nearest whole percentages