



Airport Director's Report

Presented at the June 1, 2016
Airport Community Roundtable Meeting

Aircraft Noise Abatement Office
February 2016



San Francisco
International
Airport

Monthly Noise Exceedance Report

San Francisco International Airport -- Director's Report

Period: **February 2016**



Airline	Noise Exceedances				Noise Exceedance Quality Rating
	Total Noise Exceedances	Total Operations per Month	Exceedances per 1,000 Operations	Score	
SKW	14	6,086	2	9.99	
DAL	19	1,855	10	9.95	
SWA	27	2,316	12	9.94	
SCX	1	70	14	9.93	
FFT	5	330	15	9.93	
VRD	46	2,864	16	9.92	
CES	1	60	17	9.92	
UAE	1	58	17	9.92	
ASA	17	955	18	9.91	
JBU	18	965	19	9.91	
VIR	2	92	22	9.89	
CPZ	16	722	22	9.89	
AAL	59	2,401	25	9.88	
UAL	228	8,350	27	9.87	
ACA	13	433	30	9.85	
AMX	5	157	32	9.84	
BAW	4	116	34	9.83	
FDX	3	81	37	9.82	
HAL	5	118	42	9.79	
CMP	7	57	123	9.40	
PAL	9	58	155	9.24	
TAI	13	83	157	9.23	
GTI	14	86	163	9.20	
SIA	20	116	172	9.15	
AIC	6	24	250	8.77	
CAL	27	90	300	8.53	
JAL	18	58	310	8.48	
EVA	41	123	333	8.37	
ETD	20	58	345	8.31	
CPA	53	140	379	8.14	
KAL	46	108	426	7.91	
NCA	20	40	500	7.55	
AAR	78	94	830	5.93	
CKS	5	4	1,250	3.87	
QFA	102	50	2,040	0.00	
TOTAL	963	29,218	8,144		

Source: SFO Noise Abatement Office

Historical Significant Exceedances Report
 San Francisco International Airport -- Director's Report
 Period: **February 2016**



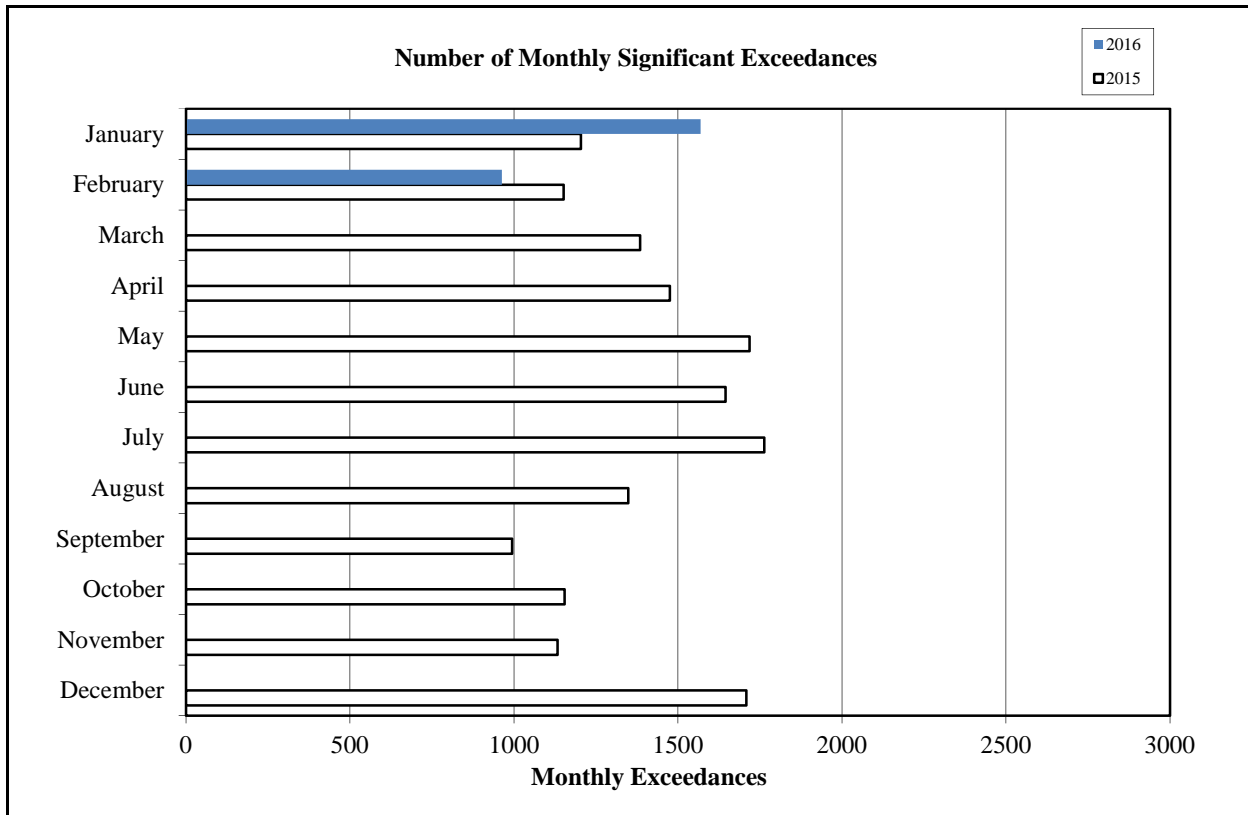
San Francisco International Airport

Month	Number of Monthly Significant Exceedances					Change from Last Year
	2012	2013	2014	2015	2016	
January	1,378	1,428	1,184	1,204	1,569	365
February	1,581	1,176	1,141	1,151	963	-188
March	1,703	1,671	1,345	1,384		0
April	1,870	1,910*	1,362	1,475		0
May	1,912	1,859*	1,515	1,718		0
June	2,355	1,915	1,740	1,645		0
July	2,621	1,647	1,619	1,763***		0
August	1,823	1,638**	1,460	1,348		0
September	1,464	1,352	1,111	994		0
October	1,689	1,277	1,055	1,154		0
November	1,421	1,262	1,245	1,133		0
December	1,439	1,160	1,670	1,708		0
Annual Total	21,256	18,295	16,447	16,677	2,532	
Year to Date Trend	21,256	18,295	16,447	16,677	2,532	177

* Revised with correct amount of exceedance - 8/5/13

** No data available from Site 7, August 1-26

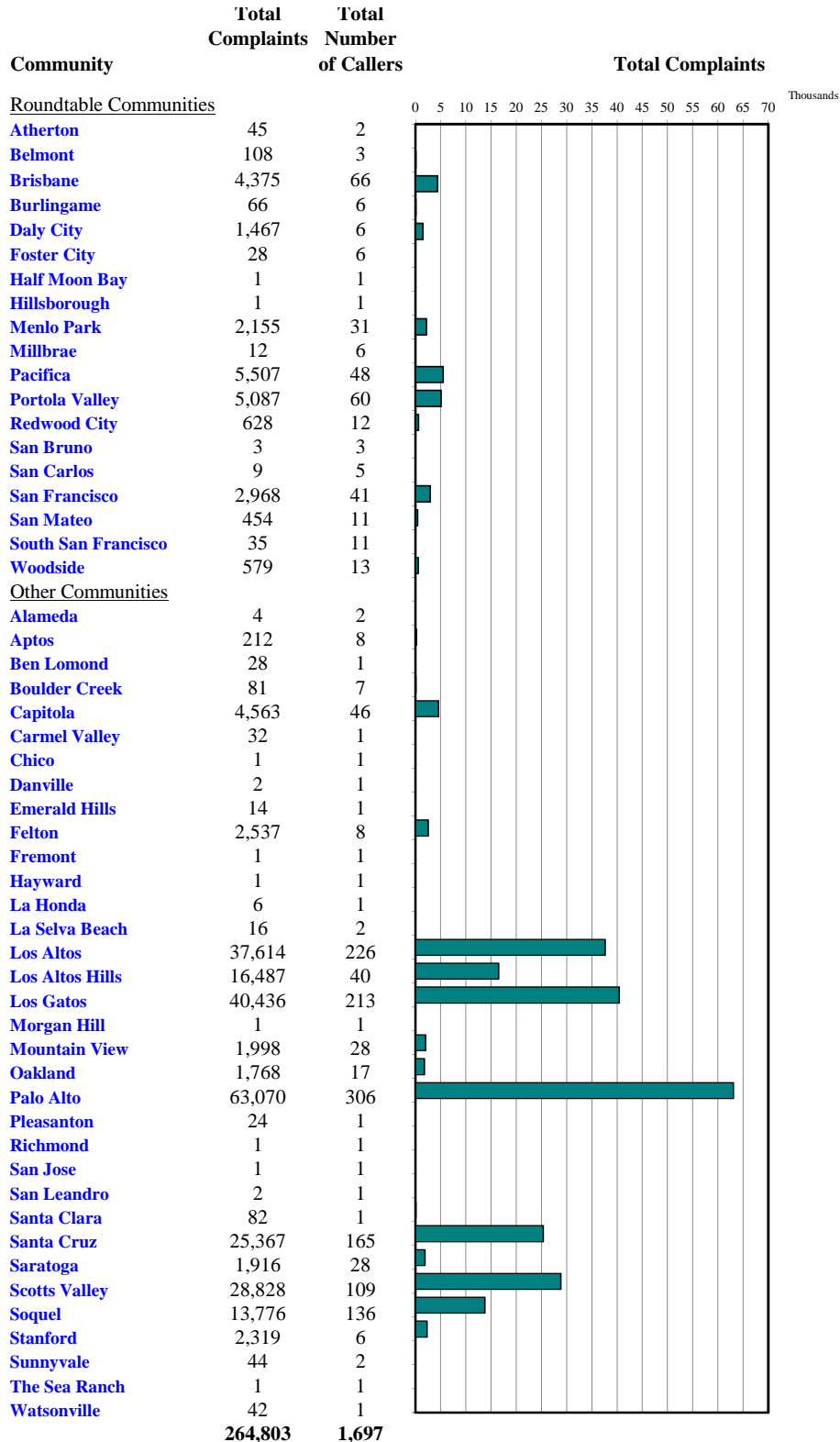
***No data available from Site 2 starting July 17





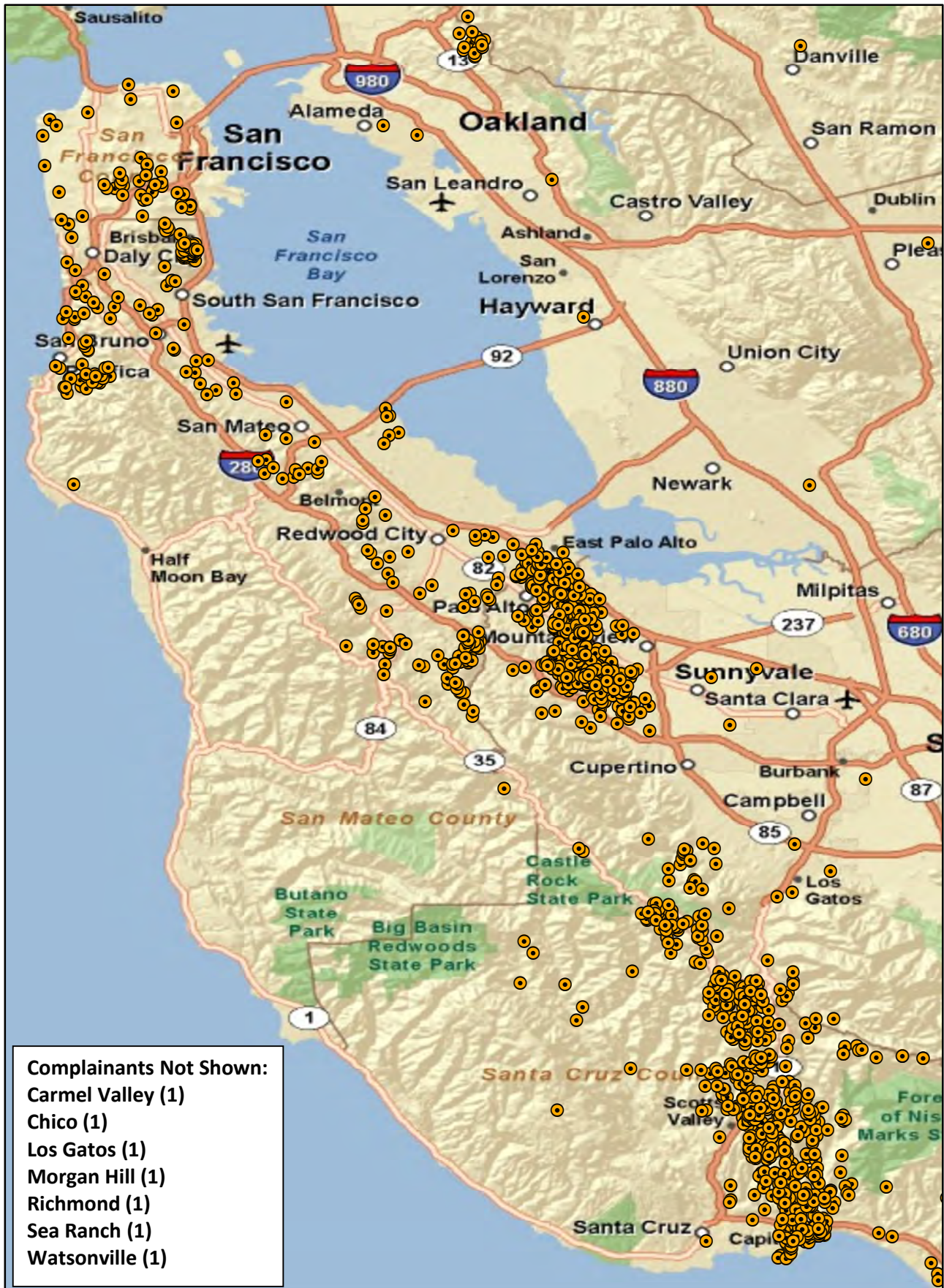
Monthly Calls by Community

Source: Airport Noise Monitoring System



"Our software vendor's address validation relies on USPS-provided ZIP code look up table and USPS-specified 'default city' values."

Monthly Noise Complainant Summary Map February 2016



"Our software vendor's address validation relies on USPS-provided ZIP code look-up table and the USPS-specified 'default city' values"

● Complainant Locations



Monthly Nighttime Power Runups Report (85-06-AOB)

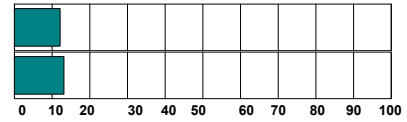
San Francisco International Airport -- Director's Report

Period : **February 2016**

Time of Day : From 10 pm through 7 am



Airline	Code	Number of Runups	Runups Per 1,000 Departures	Percentage of Runups
 UNITED	UAL	13	3.1	48%
 American Airlines	AAL	14	11.7	52%
Total		27		



A power runup is a procedure used to test an aircraft engine after maintenance is completed.

This is done to ensure safe operating standards prior to returning the aircraft to service.

The power settings tested range from idle to full power and may vary in duration.

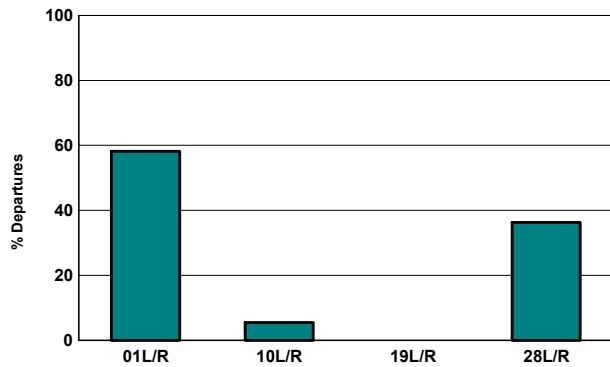


Runway Utilization (1 am to 6 am)

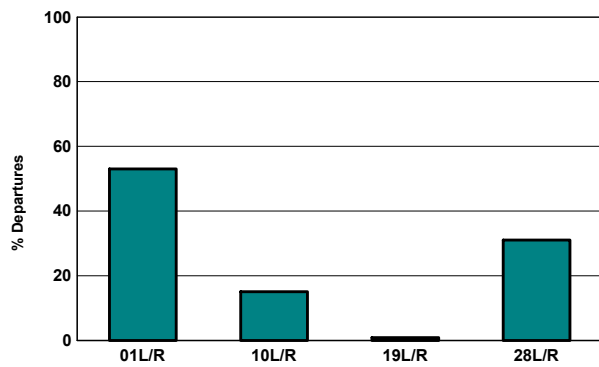
Monthly Jet Departures

	Jan	Feb	Mar	Apr	May	Jun	Jul	Aug	Sep	Oct	Nov	Dec	YTD
01L/R	155	149	-	-	-	-	-	-	-	-	-	-	304
10L/R	72	14	-	-	-	-	-	-	-	-	-	-	86
19L/R	5	-	-	-	-	-	-	-	-	-	-	-	5
28L/R	85	93	-	-	-	-	-	-	-	-	-	-	178
Total	317	256	-	-	-	-	-	-	-	-	-	-	573
01L/R	49%	58%	0%	0%	0%	0%	0%	0%	0%	0%	0%	0%	53%
10L/R	23%	5%	0%	0%	0%	0%	0%	0%	0%	0%	0%	0%	15%
19L/R	2%	0%	0%	0%	0%	0%	0%	0%	0%	0%	0%	0%	1%
28L/R	27%	36%	0%	0%	0%	0%	0%	0%	0%	0%	0%	0%	31%

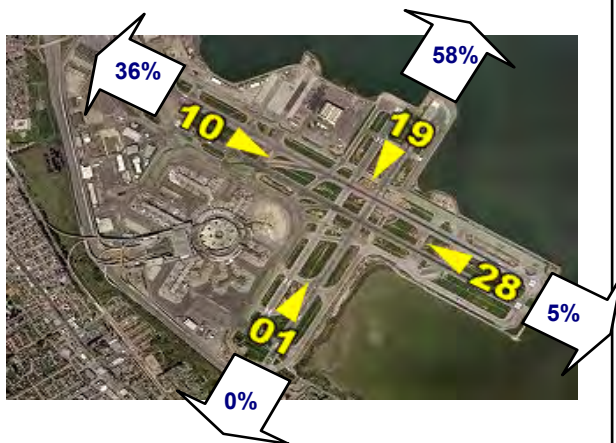
Current Month (1 am to 6 am)



Year-to-Date (1am to 6 am)

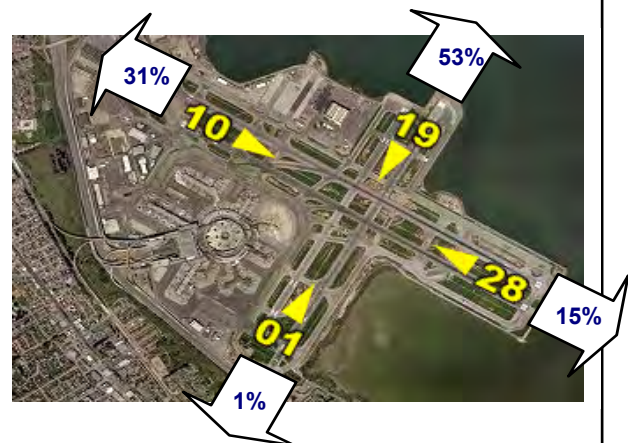


Current Month (1 am to 6 am)



Numbers rounded to nearest whole percentages

Year-to-Date (1am to 6am)



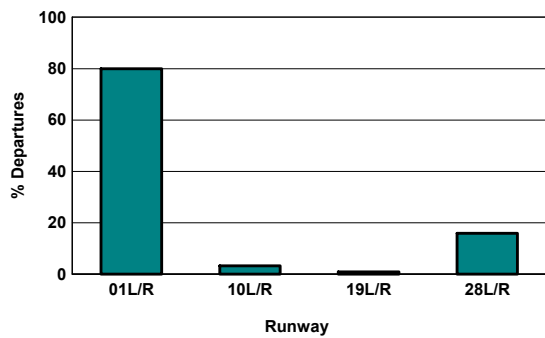
Numbers rounded to nearest whole percentages

Runway Utilization (All Hours)

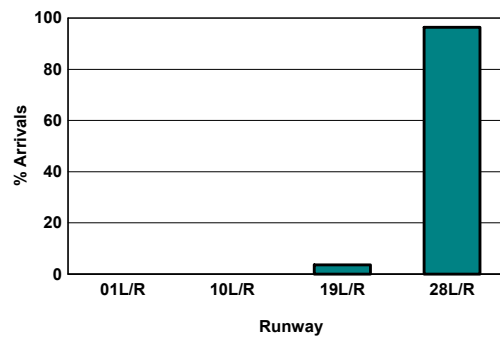
Source: Airport Noise Monitoring System

	Runway Utilization				Total
	01L/R	10L/R	19L/R	28L/R	
Total Monthly Operations					
Departures	12,024	487	149	2,391	15,051
Arrivals	0	0	548	14,534	15,082
Percentage Utilization					
Departures	79.9%	3.2%	1.0%	15.9%	100%
Arrivals	0.0%	0.0%	3.6%	96.4%	100%

Departures (All Hours)



Arrivals (All Hours)



Percentage Departure Utilization



Numbers rounded to nearest whole percentages

Percentage Arrival Utilization



Numbers rounded to nearest whole percentages