



Airport Director's Report

Presented at the June 1, 2016
Airport Community Roundtable Meeting

Aircraft Noise Abatement Office
January 2016



San Francisco
International
Airport

Monthly Noise Exceedance Report
 San Francisco International Airport -- Director's Report
 Period: January 2016



Airline	Noise Exceedances				Noise Exceedance Quality Rating
	Total Noise Exceedances	Total Operations per Month	Exceedances per 1,000 Operations	Score	
SKW	24	6,542	4	9.99	
SCX	1	84	12	9.95	
SWR	1	62	16	9.94	
ASA	19	983	19	9.92	
VIR	2	102	20	9.92	
FFT	8	368	22	9.91	
DAL	46	1,905	24	9.90	
CPZ	18	717	25	9.90	
VRD	78	3,094	25	9.90	
DLH	3	118	25	9.90	
SWA	75	2,418	31	9.88	
BAW	4	124	32	9.87	
HAL	4	124	32	9.87	
CCA	2	60	33	9.87	
ACA	15	446	34	9.87	
UAL	320	8,529	38	9.85	
AAL	114	2,475	46	9.82	
AMX	9	174	52	9.79	
JBU	61	976	63	9.75	
FDX	7	87	80	9.68	
GTI	16	82	195	9.22	
TAI	23	106	217	9.13	
CMP	17	62	274	8.90	
AIC	8	28	286	8.86	
SIA	41	124	331	8.68	
ETD	23	62	371	8.52	
PAL	38	82	463	8.15	
JAL	31	62	500	8.00	
EVA	70	136	515	7.94	
CPA	79	151	523	7.91	
CAL	56	104	538	7.85	
KAL	76	107	710	7.16	
NCA	36	46	783	6.87	
AAR	95	97	979	6.08	
CKS	39	18	2,167	1.33	
QFA	110	44	2,500	0.00	
TOTAL	1,569	30,699	11,985		

Source: SFO Noise Abatement Office

Historical Significant Exceedances Report
 San Francisco International Airport -- Director's Report
 Period: **January 2016**



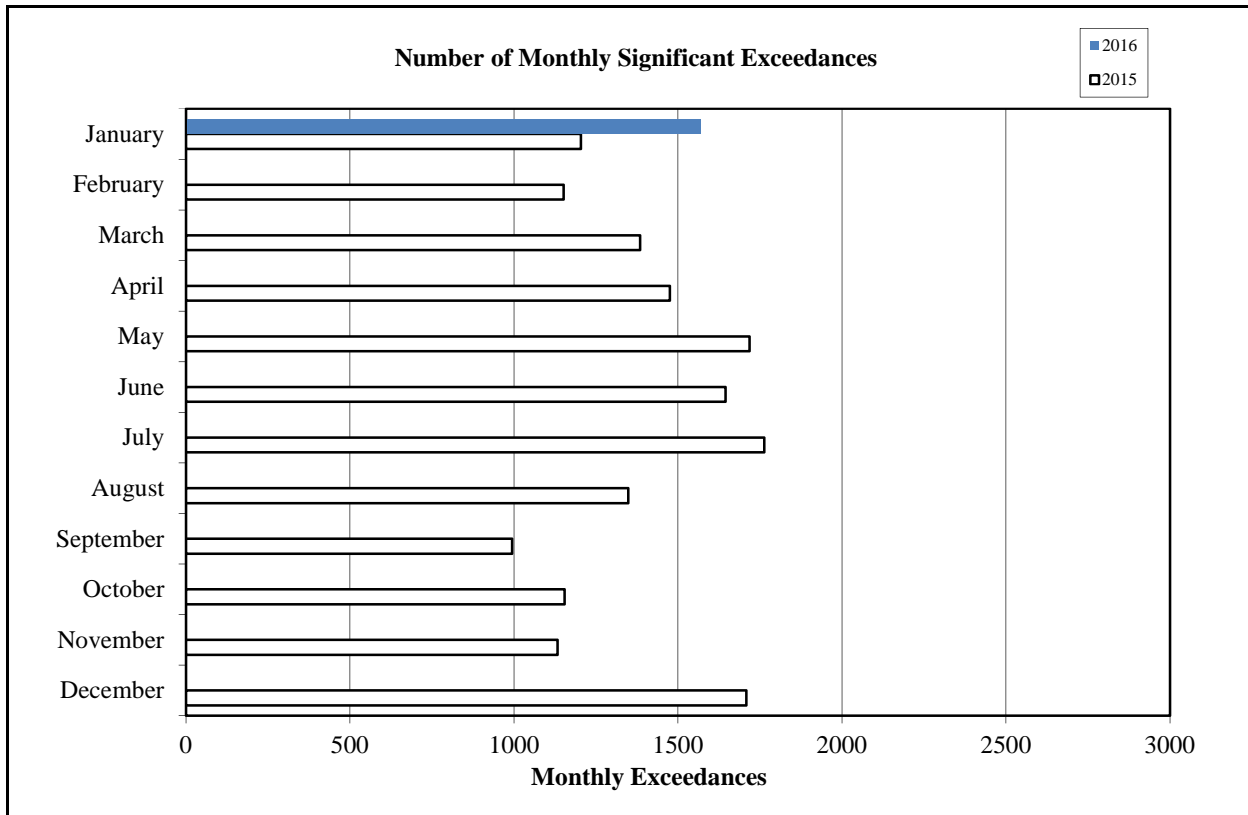
San Francisco International Airport

Month	Number of Monthly Significant Exceedances					Change from Last Year
	2012	2013	2014	2015	2016	
January	1,378	1,428	1,184	1,204	1,569	365
February	1,581	1,176	1,141	1,151		0
March	1,703	1,671	1,345	1,384		0
April	1,870	1,910*	1,362	1,475		0
May	1,912	1,859*	1,515	1,718		0
June	2,355	1,915	1,740	1,645		0
July	2,621	1,647	1,619	1,763***		0
August	1,823	1,638**	1,460	1,348		0
September	1,464	1,352	1,111	994		0
October	1,689	1,277	1,055	1,154		0
November	1,421	1,262	1,245	1,133		0
December	1,439	1,160	1,670	1,708		0
Annual Total	21,256	18,295	16,447	16,677	1,569	
Year to Date Trend	21,256	18,295	16,447	16,677	1,569	365

* Revised with correct amount of exceedance - 8/5/13

** No data available from Site 7, August 1-26

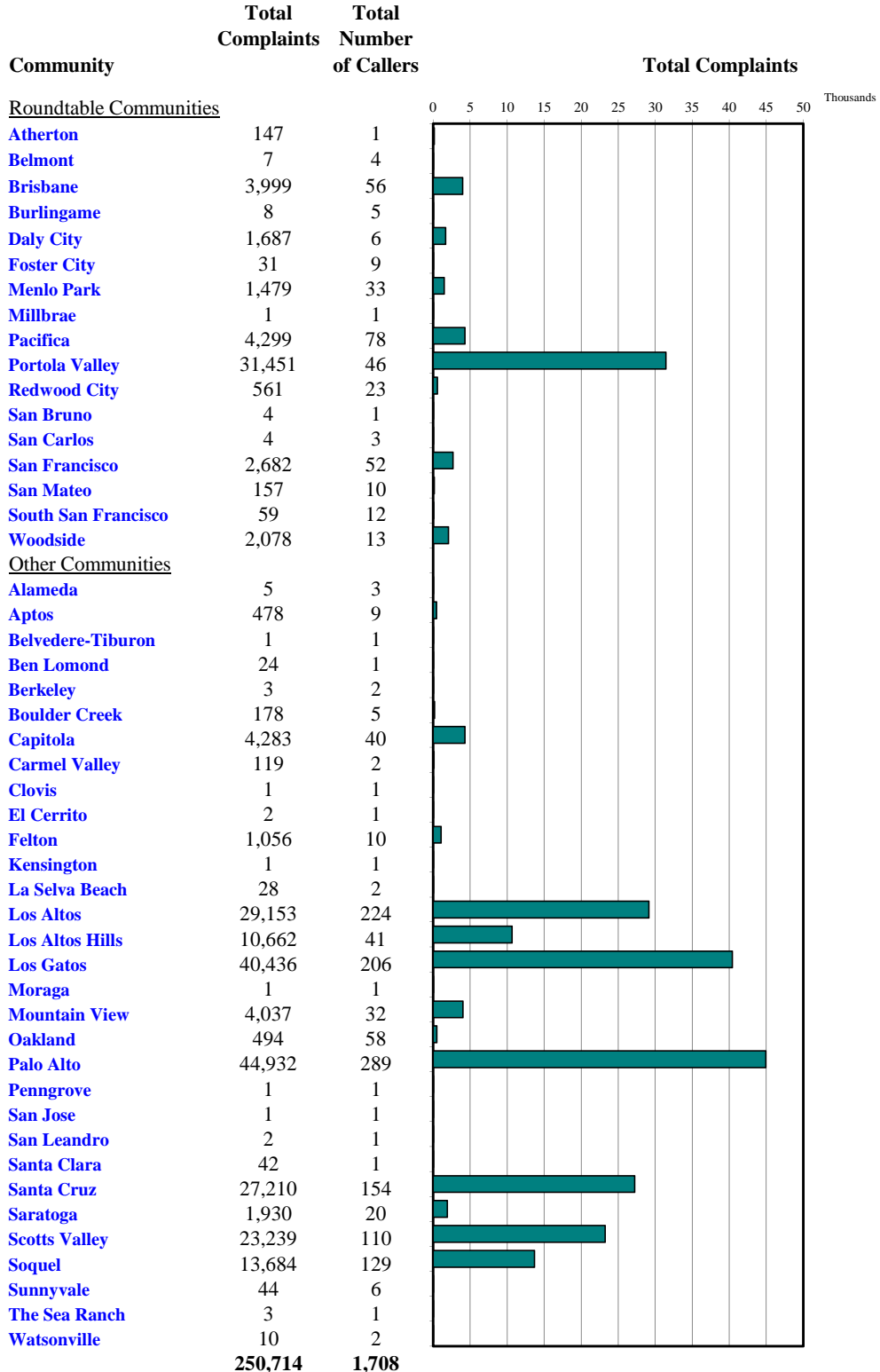
***No data available from Site 2 starting July 17





Monthly Calls by Community

Source: Airport Noise Monitoring System



"Our software vendor's address validation relies on USPS-provided ZIP code look up table and USPS-specified 'default city' values."



Monthly Nighttime Power Runups Report (85-06-AOB)

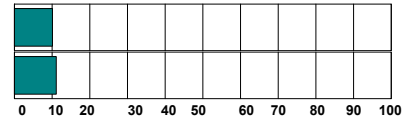
San Francisco International Airport -- Director's Report

Period : **January 2016**

Time of Day : From 10 pm through 7 am



Airline	Code	Number of Runups	Runups Per 1,000 Departures	Percentage of Runups
American Airlines 	AAL	11	8.9	48%
UNITED 	UAL	12	2.8	52%
Total		23		



A power runup is a procedure used to test an aircraft engine after maintenance is completed. This is done to ensure safe operating standards prior to returning the aircraft to service. The power settings tested range from idle to full power and may vary in duration.

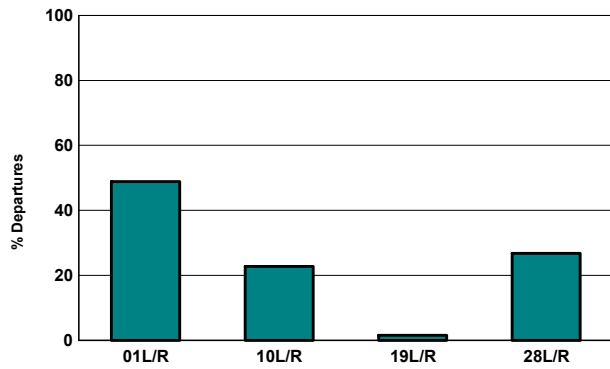


Runway Utilization (1 am to 6 am)

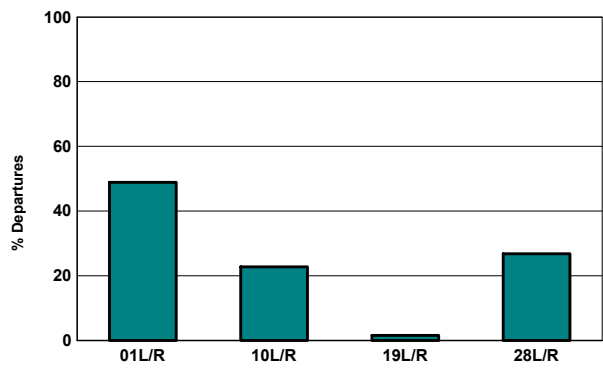
Monthly Jet Departures

	Jan	Feb	Mar	Apr	May	Jun	Jul	Aug	Sep	Oct	Nov	Dec	YTD
01L/R	155	-	-	-	-	-	-	-	-	-	-	-	155
10L/R	72	-	-	-	-	-	-	-	-	-	-	-	72
19L/R	5	-	-	-	-	-	-	-	-	-	-	-	5
28L/R	85	-	-	-	-	-	-	-	-	-	-	-	85
Total	317	-	-	-	-	-	-	-	-	-	-	-	317
01L/R	49%	0%	0%	0%	0%	0%	0%	0%	0%	0%	0%	0%	49%
10L/R	23%	0%	0%	0%	0%	0%	0%	0%	0%	0%	0%	0%	23%
19L/R	2%	0%	0%	0%	0%	0%	0%	0%	0%	0%	0%	0%	2%
28L/R	27%	0%	0%	0%	0%	0%	0%	0%	0%	0%	0%	0%	27%

Current Month (1 am to 6 am)



Year-to-Date (1am to 6 am)

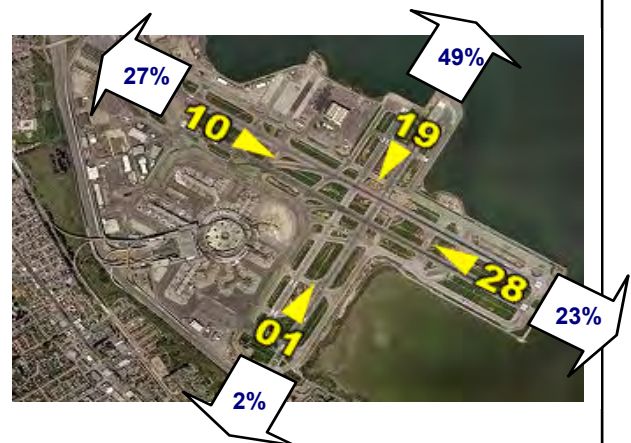


Current Month (1 am to 6 am)



Numbers rounded to nearest whole percentages

Year-to-Date (1am to 6am)



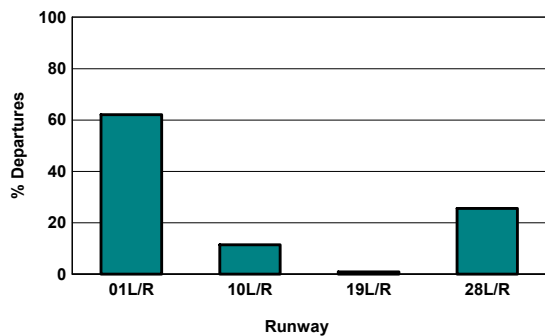
Numbers rounded to nearest whole percentages

Runway Utilization (All Hours)

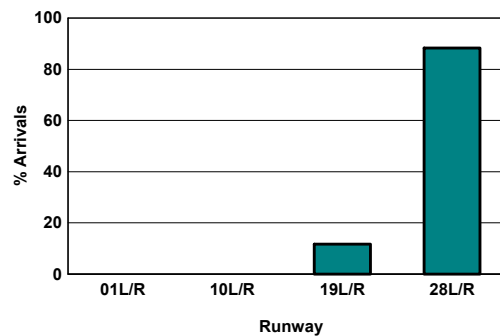
Source: Airport Noise Monitoring System

	Runway Utilization				Total
	01L/R	10L/R	19L/R	28L/R	
Total Monthly Operations					
Departures	9,805	1,805	138	4,054	15,802
Arrivals	0	0	1,844	13,913	15,757
Percentage Utilization					
Departures	62.0%	11.4%	0.9%	25.7%	100%
Arrivals	0.0%	0.0%	11.7%	88.3%	100%

Departures (All Hours)



Arrivals (All Hours)



Percentage Departure Utilization



Numbers rounded to nearest whole percentages

Percentage Arrival Utilization



Numbers rounded to nearest whole percentages