



# Airport Director's Report

Presented at the June 1, 2016  
Airport Community Roundtable Meeting

Aircraft Noise Abatement Office  
December 2015



San Francisco  
International  
Airport

**Monthly Noise Exceedance Report**

San Francisco International Airport -- Director's Report

Period: **December 2015**



Airline	Noise Exceedances				Noise Exceedance Quality Rating
	Total Noise Exceedances	Total Operations per Month	Exceedances per 1,000 Operations	Score	
SKW	40	6,607	6	<b>9.97</b>	
VIR	1	103	10	<b>9.96</b>	
SCX	4	141	28	<b>9.87</b>	
FFT	14	490	29	<b>9.87</b>	
VRD	95	3,230	29	<b>9.87</b>	
DAL	65	1,993	33	<b>9.86</b>	
ASA	36	983	37	<b>9.84</b>	
CPZ	20	544	37	<b>9.84</b>	
HAL	5	124	40	<b>9.82</b>	
SWA	103	2,445	42	<b>9.81</b>	
UAL	440	9,361	47	<b>9.79</b>	
AAL	134	2,707	50	<b>9.78</b>	
JBU	49	971	50	<b>9.78</b>	
AMX	10	190	53	<b>9.77</b>	
ACA	30	458	66	<b>9.71</b>	
BAW	9	118	76	<b>9.66</b>	
DLH	9	106	85	<b>9.62</b>	
FDX	11	97	113	<b>9.50</b>	
CMP	11	62	177	<b>9.21</b>	
TAI	28	120	233	<b>8.96</b>	
ETD	15	62	242	<b>8.92</b>	
GTI	23	92	250	<b>8.89</b>	
PAL	24	80	300	<b>8.67</b>	
NCA	15	46	326	<b>8.55</b>	
SIA	45	123	366	<b>8.37</b>	
AIC	10	26	385	<b>8.29</b>	
JAL	25	62	403	<b>8.21</b>	
CAL	41	96	427	<b>8.10</b>	
EVA	64	139	460	<b>7.95</b>	
CPA	73	151	483	<b>7.85</b>	
KAL	86	118	729	<b>6.76</b>	
AAR	89	115	774	<b>6.56</b>	
CKS	48	50	960	<b>5.73</b>	
QFA	36	16	2,250	<b>0.00</b>	
<b>TOTAL</b>	<b>1,708</b>	<b>32,026</b>	<b>9,596</b>		

Source: SFO Noise Abatement Office

**Historical Significant Exceedances Report**  
 San Francisco International Airport -- Director's Report  
 Period: **December 2015**



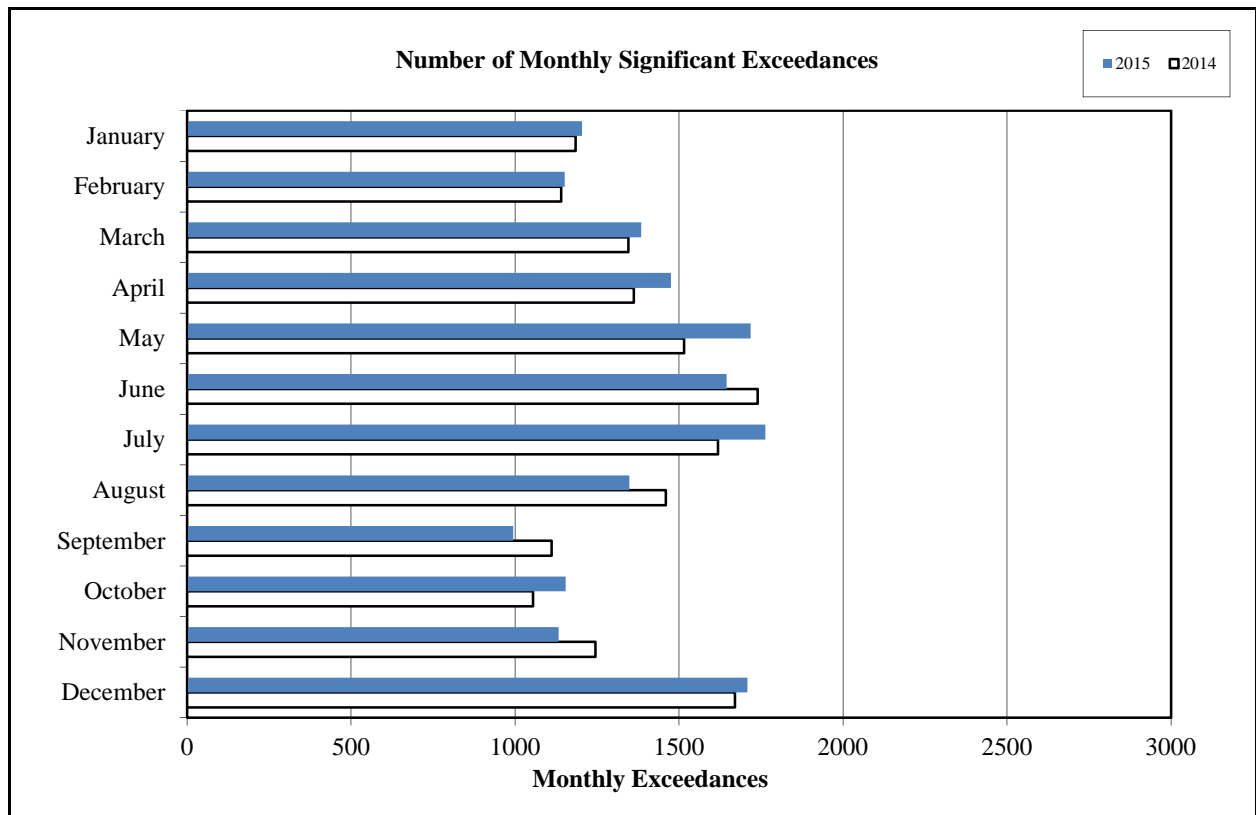
San Francisco International Airport

Month	Number of Monthly Significant Exceedances					Change from Last Year
	2011	2012	2013	2014	2015	
January	1,580	1,378	1,428	1,184	1,204	20
February	1,429	1,581	1,176	1,141	1,151	10
March	1,681	1,703	1,671	1,345	1,384	39
April	1,900	1,870	1,910*	1,362	1,475	113
May	2,024	1,912	1,859*	1,515	1,718	203
June	1,947	2,355	1,915	1,740	1,645	-95
July	2,017	2,621	1,647	1,619	1,763***	144
August	1,847	1,823	1,638**	1,460	1,348	-112
September	1,609	1,464	1,352	1,111	994	-117
October	1,572	1,689	1,277	1,055	1,154	99
November	1,575	1,421	1,262	1,245	1,133	-112
December	1,447	1,439	1,160	1,670	1,708	38
<b>Annual Total</b>	<b>20,628</b>	<b>21,256</b>	<b>18,295</b>	<b>16,447</b>	<b>16,677</b>	
<b>Year to Date Trend</b>	<b>20,628</b>	<b>21,256</b>	<b>18,295</b>	<b>16,447</b>	<b>16,677</b>	<b>230</b>

\* Revised with correct amount of exceedance - 8/5/13

\*\* No data available from Site 7, August 1-26

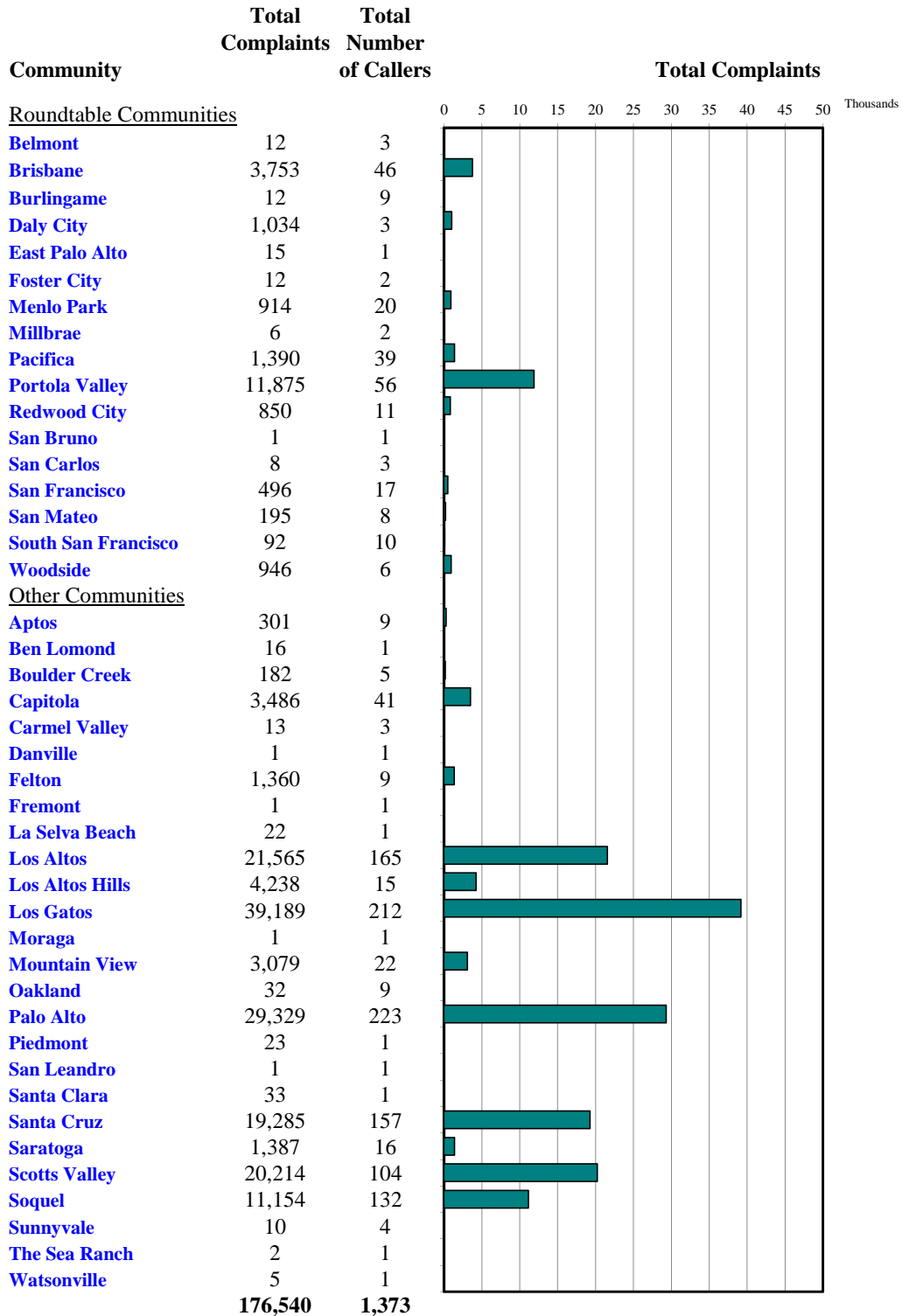
\*\*\*No data available from Site 2 starting July 17





**Monthly Calls by Community**

Source: Airport Noise Monitoring System



"Our software vendor's address validation relies on USPS-provided ZIP code look up table and USPS-specified 'default city' values."

# Monthly Noise Complaint Summary Map December 2015



"Our software vendor's address validation relies on USPS-provided ZIP code look up table and the USPS-specified 'default city' values."

 Caller Location


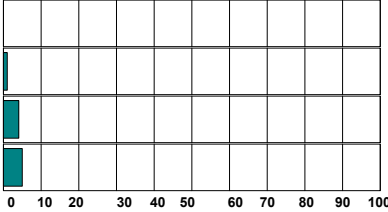



**Monthly Nighttime Power Runups Report (85-06-AOB)**

San Francisco International Airport -- Director's Report

Period : **December 2015**

Time of Day : From 10 pm through 7 am



Airline	Code	Number of Runups	Runups Per 1,000 Departures	Percentage of Runups	
	CPZ	1	3.7	7%	
	JBU	2	4.1	14%	
	UAL	5	1.1	36%	
	AAL	6	4.4	43%	
<b>Total</b>		<b>14</b>			

*A power runup is a procedure used to test an aircraft engine after maintenance is completed.*

*This is done to ensure safe operating standards prior to returning the aircraft to service.*

*The power settings tested range from idle to full power and may vary in duration.*

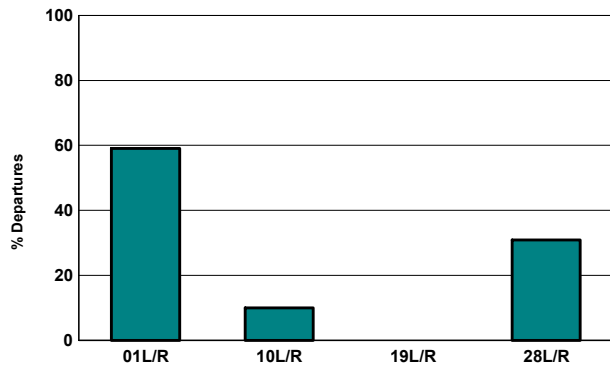


**Runway Utilization (1 am to 6 am)**

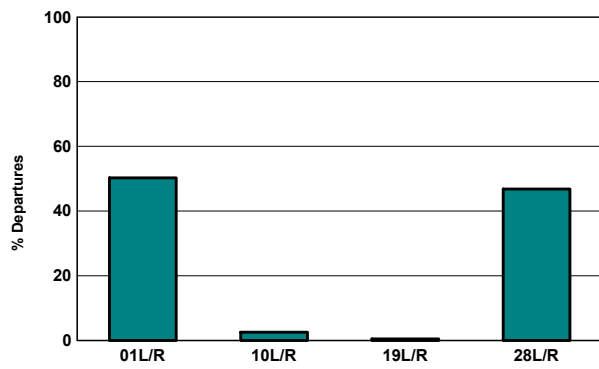
**Monthly Jet Departures**

	Jan	Feb	Mar	Apr	May	Jun	Jul	Aug	Sep	Oct	Nov	Dec	YTD
01L/R	99	72	114	178	206	259	303	302	247	235	199	300	2,514
10L/R	5	22	6	17	1	-	-	2	9	4	7	51	124
19L/R	-	22	-	-	-	-	-	-	-	-	-	-	22
28L/R	81	82	181	226	262	269	270	240	244	239	94	157	2,345
<b>Total</b>	<b>185</b>	<b>198</b>	<b>301</b>	<b>421</b>	<b>469</b>	<b>528</b>	<b>573</b>	<b>544</b>	<b>500</b>	<b>478</b>	<b>300</b>	<b>508</b>	<b>5,005</b>
01L/R	54%	36%	38%	42%	44%	49%	53%	56%	49%	49%	66%	59%	50%
10L/R	3%	11%	2%	4%	0%	0%	0%	0%	2%	1%	2%	10%	2%
19L/R	0%	11%	0%	0%	0%	0%	0%	0%	0%	0%	0%	0%	0%
28L/R	44%	41%	60%	54%	56%	51%	47%	44%	49%	50%	31%	31%	47%

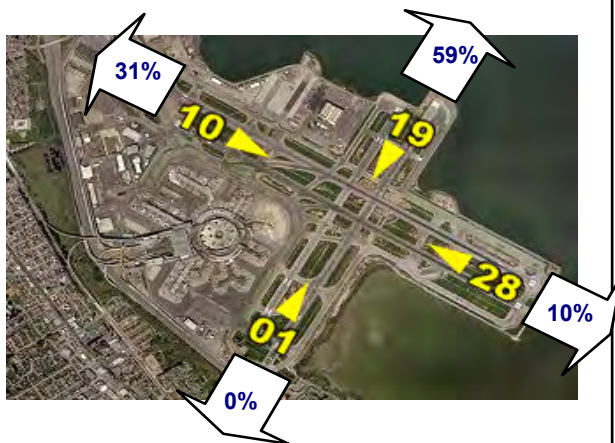
**Current Month (1 am to 6 am)**



**Year-to-Date (1am to 6 am)**

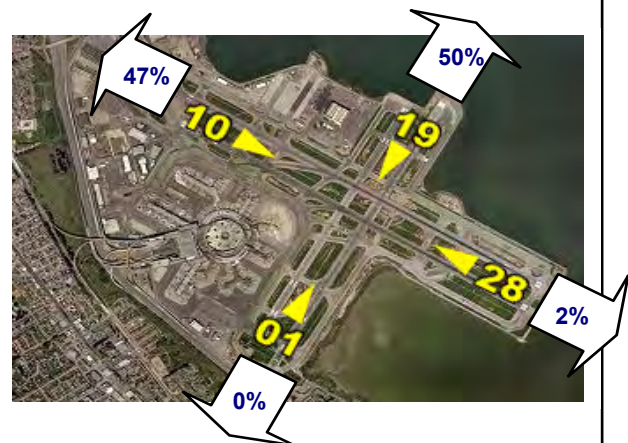


**Current Month (1 am to 6 am)**



Numbers rounded to nearest whole percentages

**Year-to-Date (1am to 6am)**



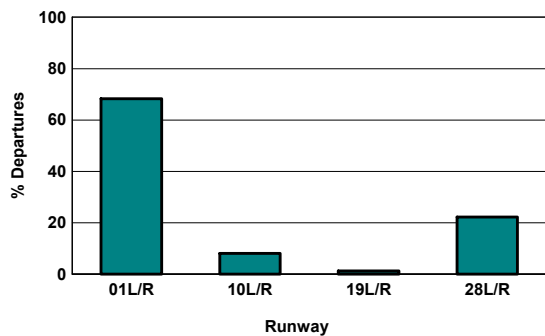
Numbers rounded to nearest whole percentages

**Runway Utilization (All Hours)**

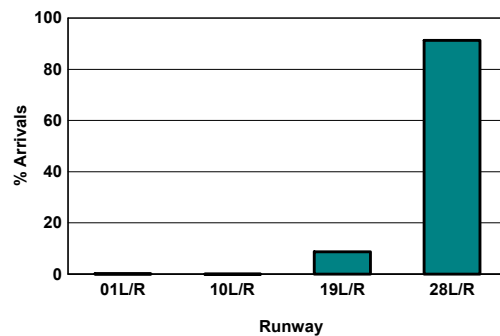
Source: Airport Noise Monitoring System

	Runway Utilization				Total
	01L/R	10L/R	19L/R	28L/R	
<b>Total Monthly Operations</b>					
Departures	11,298	1,339	224	3,677	16,538
Arrivals	15	1	1,429	15,040	16,485
<b>Percentage Utilization</b>					
Departures	68.3%	8.1%	1.4%	22.2%	100%
Arrivals	0.1%	0.0%	8.7%	91.2%	100%

**Departures (All Hours)**



**Arrivals (All Hours)**

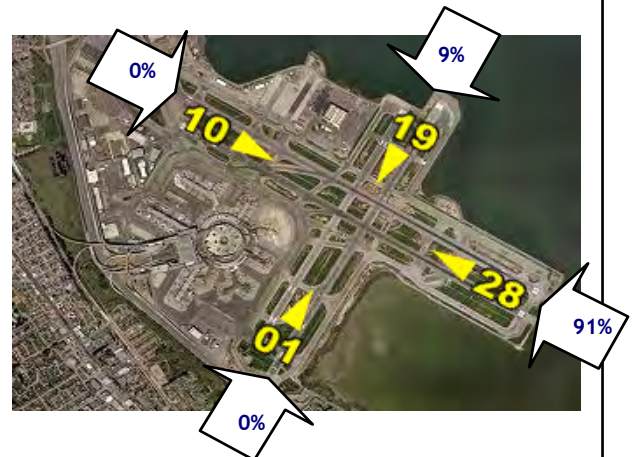


**Percentage Departure Utilization**



Numbers rounded to nearest whole percentages

**Percentage Arrival Utilization**



Numbers rounded to nearest whole percentages