



Airport Director's Report

Aircraft Noise Abatement Office
November 2015



San Francisco
International
Airport

Monthly Noise Exceedance Report

San Francisco International Airport -- Director's Report

Period: **November 2015**



Airline	Noise Exceedances				Noise Exceedance Quality Rating
	Total Noise Exceedances	Total Operations per Month	Exceedances per 1,000 Operations	Score	
FFT	1	449	2	9.98	
SKW	22	6,623	3	9.97	
DAL	20	2,145	9	9.90	
VRD	34	3,138	11	9.89	
CPZ	12	803	15	9.84	
CES	1	60	17	9.82	
AFR	1	58	17	9.82	
SWR	1	57	18	9.82	
ASA	18	985	18	9.81	
EIN	1	44	23	9.76	
SWA	60	2,489	24	9.75	
JBU	25	991	25	9.73	
AAL	73	2,708	27	9.72	
AMX	5	162	31	9.68	
UAL	308	9,327	33	9.65	
HAL	4	120	33	9.65	
ACA	16	394	41	9.57	
BAW	6	117	51	9.46	
FDX	6	77	78	9.18	
CMP	5	61	82	9.14	
TAI	12	87	138	8.55	
GTI	19	86	221	7.68	
SIA	36	119	303	6.82	
JAL	22	60	367	6.15	
ETD	24	60	400	5.80	
NCA	20	49	408	5.71	
CAL	37	89	416	5.63	
EVA	58	137	423	5.55	
CPA	63	147	429	5.50	
PAL	29	59	492	4.84	
CKS	4	6	667	3.00	
KAL	91	123	740	2.23	
AAR	99	104	952	0.00	
TOTAL	1,133	31,934	6,512		

Source: SFO Noise Abatement Office

Historical Significant Exceedances Report
 San Francisco International Airport -- Director's Report
 Period: **November 2015**



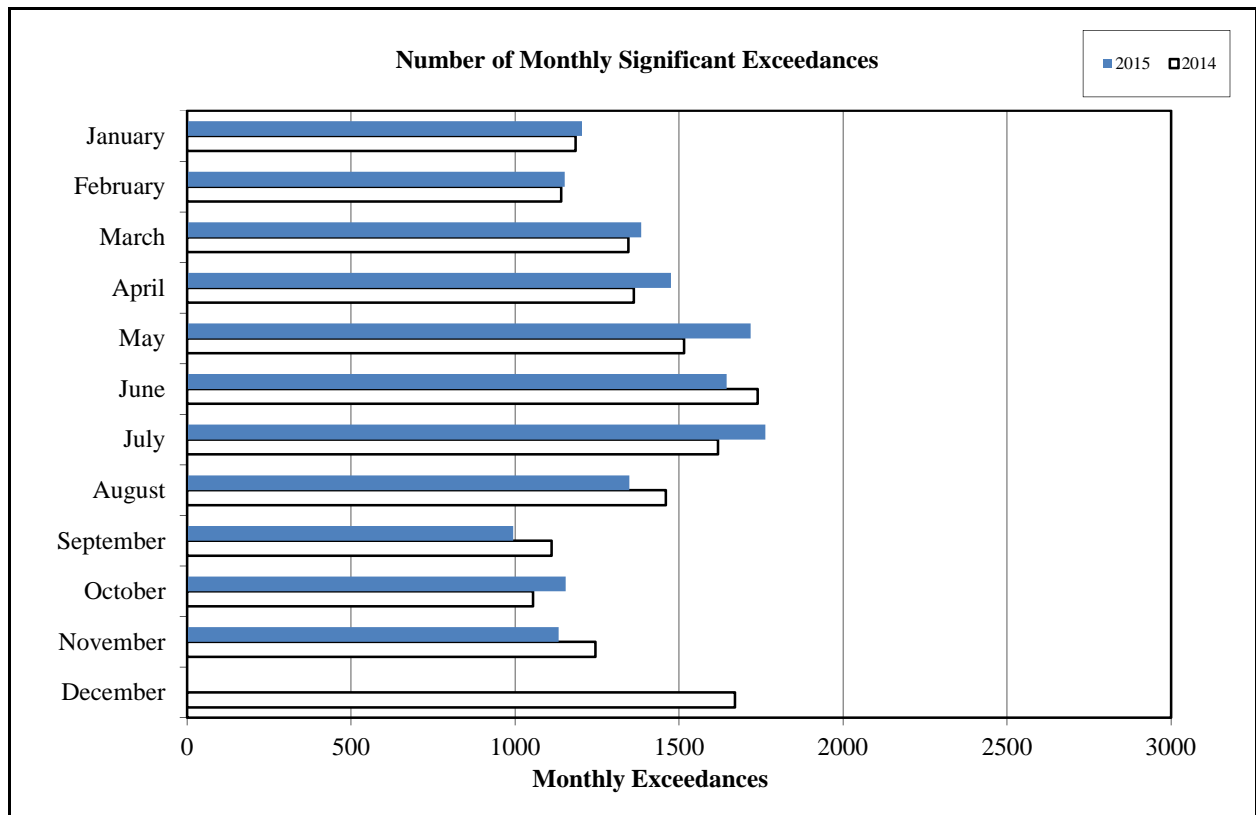
San Francisco International Airport

Month	Number of Monthly Significant Exceedances					Change from Last Year
	2011	2012	2013	2014	2015	
January	1,580	1,378	1,428	1,184	1,204	20
February	1,429	1,581	1,176	1,141	1,151	10
March	1,681	1,703	1,671	1,345	1,384	39
April	1,900	1,870	1,910*	1,362	1,475	113
May	2,024	1,912	1,859*	1,515	1,718	203
June	1,947	2,355	1,915	1,740	1,645	-95
July	2,017	2,621	1,647	1,619	1,763***	144
August	1,847	1,823	1,638**	1,460	1,348	-112
September	1,609	1,464	1,352	1,111	994	-117
October	1,572	1,689	1,277	1,055	1,154	99
November	1,575	1,421	1,262	1,245	1,133	-112
December	1,447	1,439	1,160	1,670		0
Annual Total	20,628	21,256	18,295	16,447	14,969	
Year to Date Trend	20,628	21,256	18,295	16,447	14,969	192

* Revised with correct amount of exceedance - 8/5/13

** No data available from Site 7, August 1-26

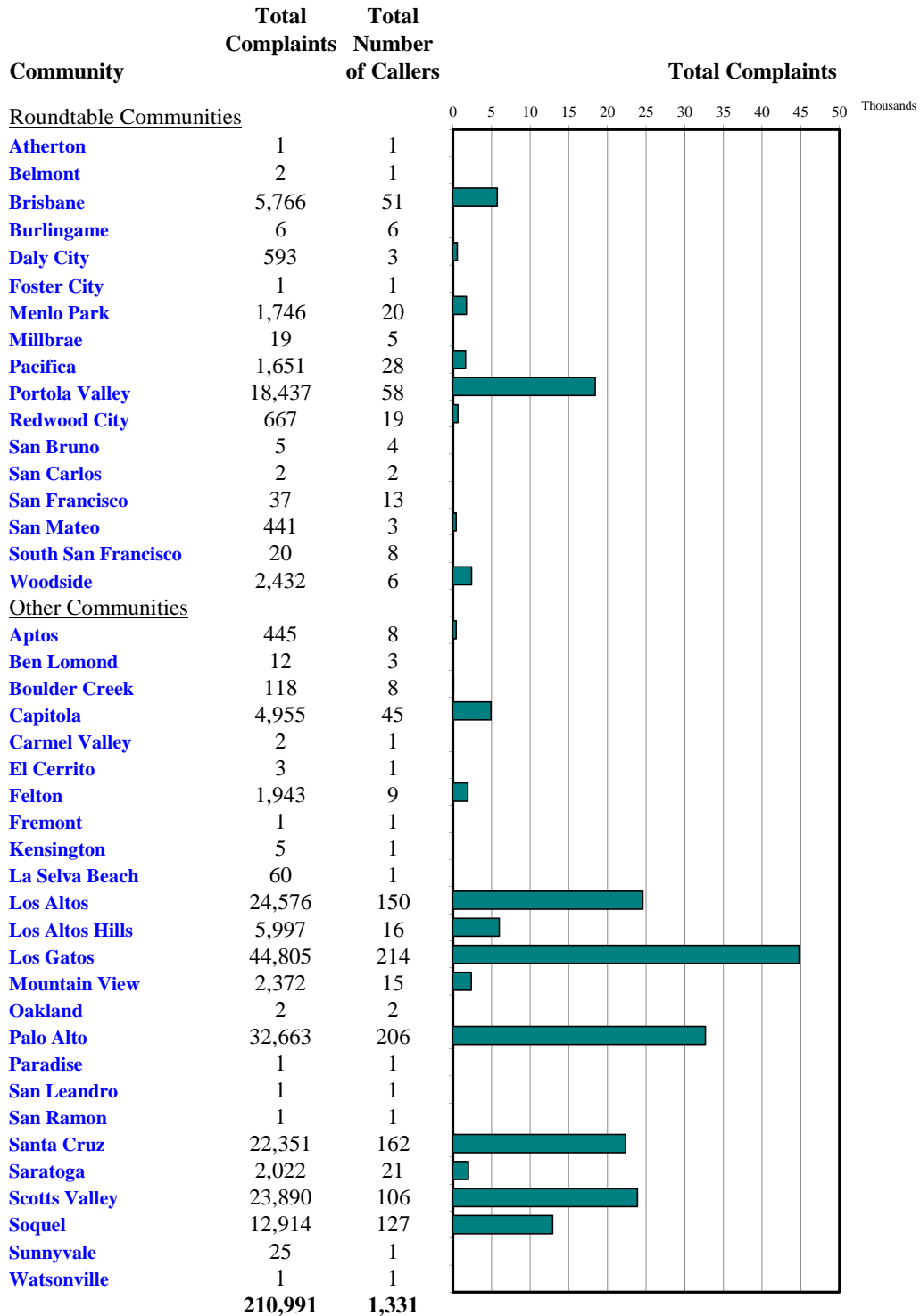
***No data available from Site 2 starting July 17





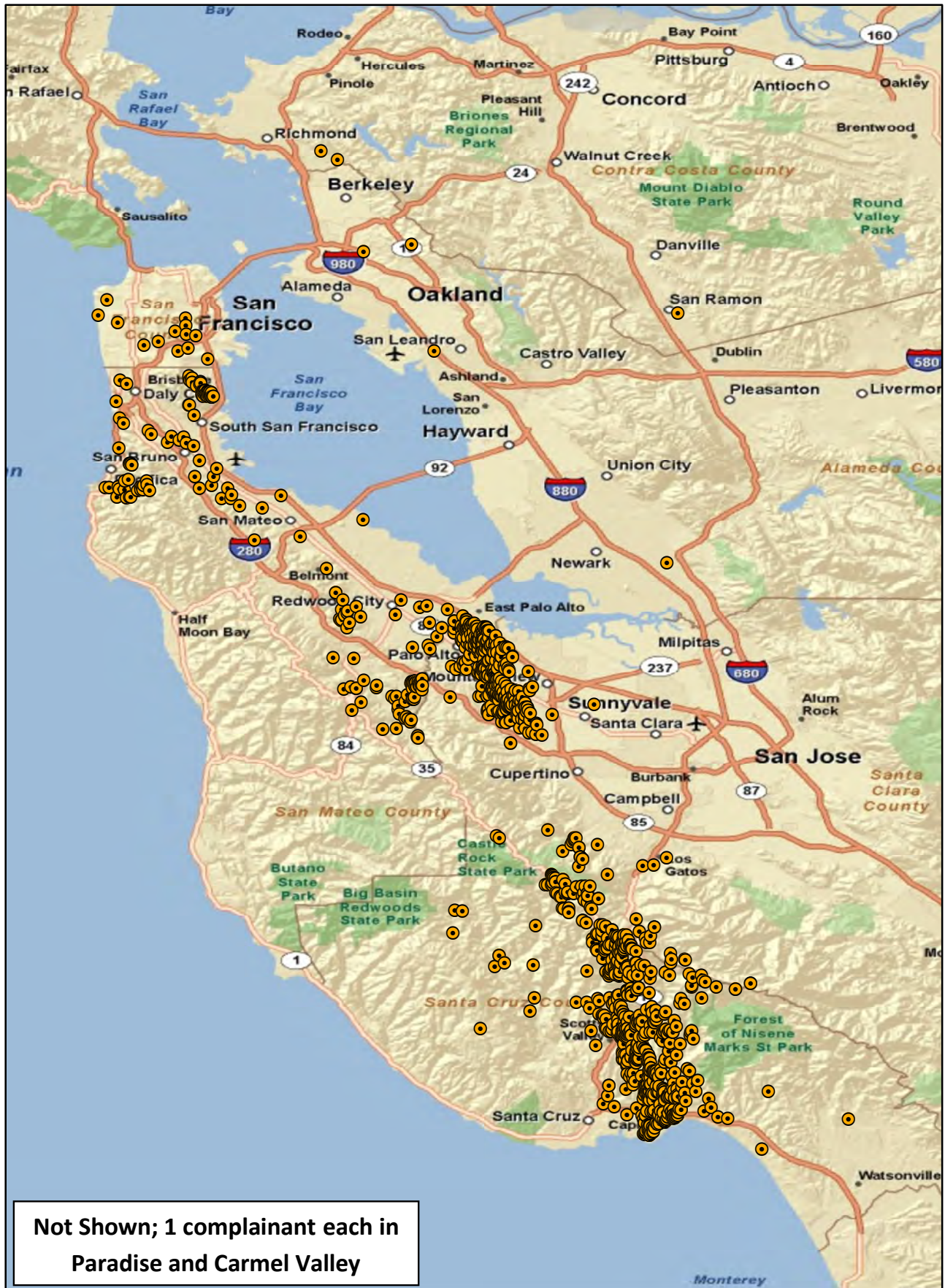
Monthly Calls by Community

Source: Airport Noise Monitoring System



"Our software vendor's address validation relies on USPS-provided ZIP code look up table and USPS-specified 'default city' values."

Monthly Noise Complaint Summary Map November 2015



Not Shown; 1 complainant each in
Paradise and Carmel Valley

"Our software vendor's address validation relies on USPS-provided ZIP code look up table and USPS-specified 'default city' values."

 Caller Location




Monthly Nighttime Power Runups Report (85-06-AOB)

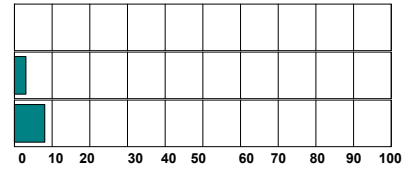
San Francisco International Airport -- Director's Report

Period : **November 2015**

Time of Day : From 10 pm through 7 am



Airline	Code	Number of Runups	Runups Per 1,000 Departures	Percentage of Runups
 DELTA	DAL	1	0.9	7%
 UNITED	UAL	4	0.9	29%
 American Airlines	AAL	9	6.7	64%
Total		14		



A power runup is a procedure used to test an aircraft engine after maintenance is completed.

This is done to ensure safe operating standards prior to returning the aircraft to service.

The power settings tested range from idle to full power and may vary in duration.

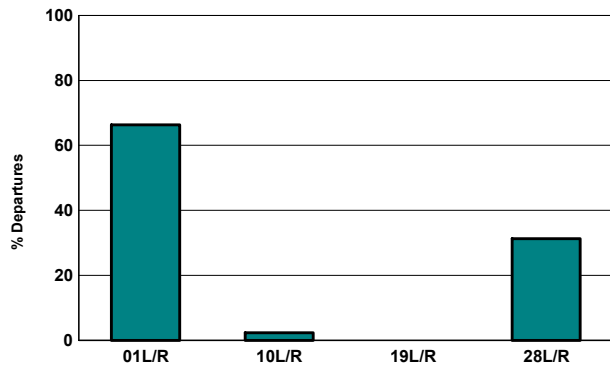


Runway Utilization (1 am to 6 am)

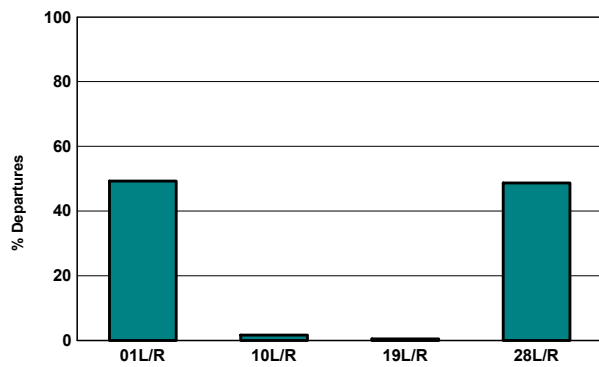
Monthly Jet Departures

	Jan	Feb	Mar	Apr	May	Jun	Jul	Aug	Sep	Oct	Nov	Dec	YTD
01L/R	99	72	114	178	206	259	303	302	247	235	199	-	2,214
10L/R	5	22	6	17	1	-	-	2	9	4	7	-	73
19L/R	-	22	-	-	-	-	-	-	-	-	-	-	22
28L/R	81	82	181	226	262	269	270	240	244	239	94	-	2,188
Total	185	198	301	421	469	528	573	544	500	478	300	-	4,497
01L/R	54%	36%	38%	42%	44%	49%	53%	56%	49%	49%	66%	0%	49%
10L/R	3%	11%	2%	4%	0%	0%	0%	0%	2%	1%	2%	0%	2%
19L/R	0%	11%	0%	0%	0%	0%	0%	0%	0%	0%	0%	0%	0%
28L/R	44%	41%	60%	54%	56%	51%	47%	44%	49%	50%	31%	0%	49%

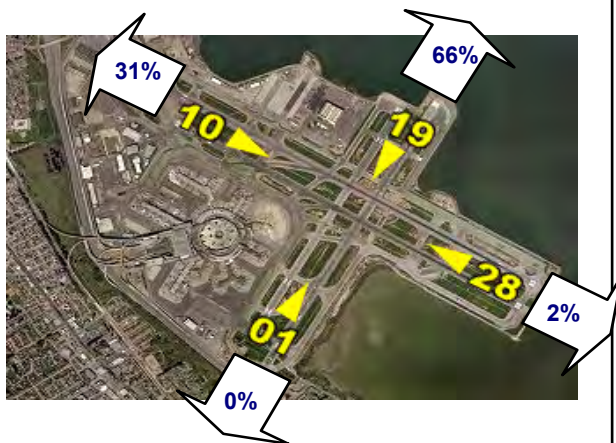
Current Month (1 am to 6 am)



Year-to-Date (1am to 6 am)

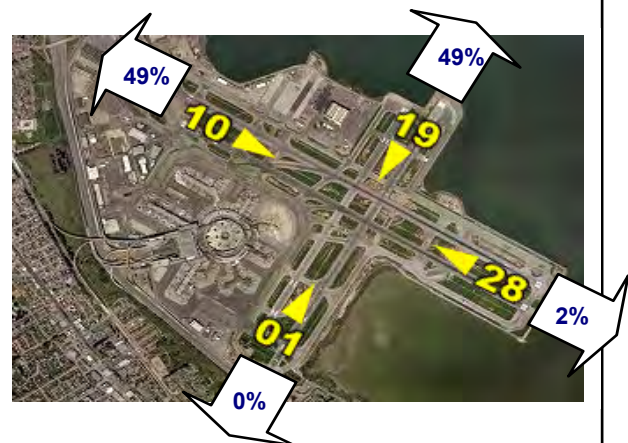


Current Month (1 am to 6 am)



Numbers rounded to nearest whole percentages

Year-to-Date (1am to 6am)



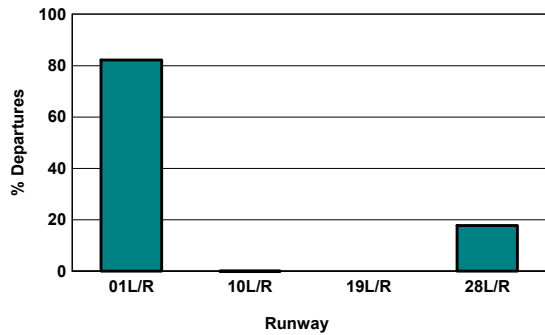
Numbers rounded to nearest whole percentages

Runway Utilization (All Hours)

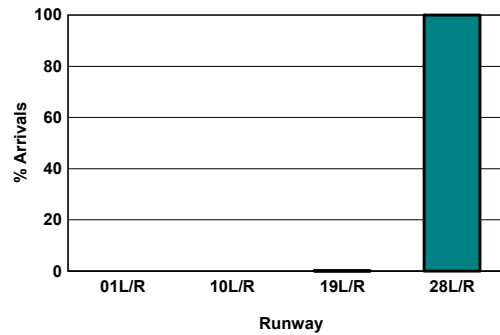
Source: Airport Noise Monitoring System

	Runway Utilization				Total
	01L/R	10L/R	19L/R	28L/R	
Total Monthly Operations					
Departures	13,544	20	0	2,930	16,494
Arrivals	0	0	9	16,510	16,519
Percentage Utilization					
Departures	82.1%	0.1%	0.0%	17.8%	100%
Arrivals	0.0%	0.0%	0.1%	99.9%	100%

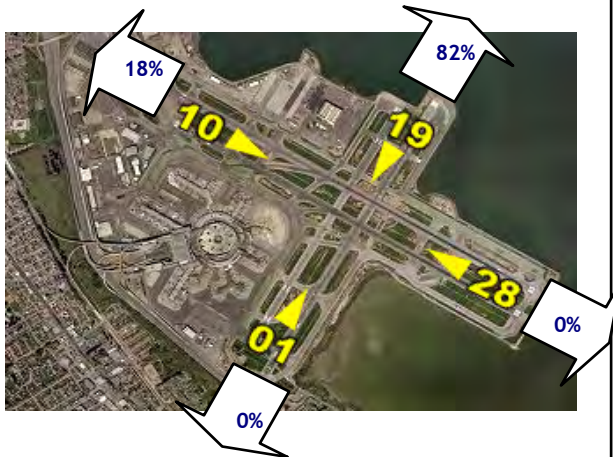
Departures (All Hours)



Arrivals (All Hours)

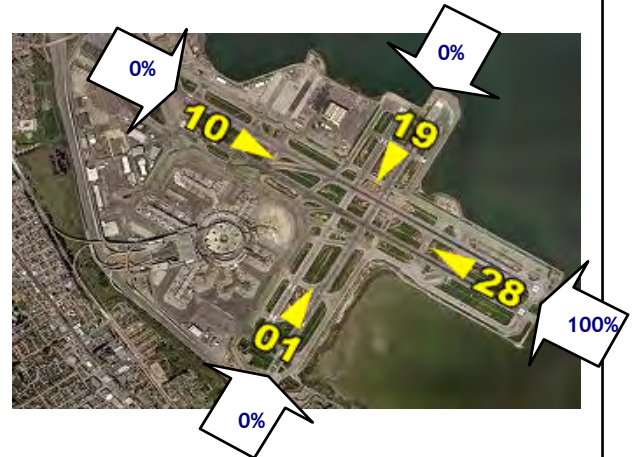


Percentage Departure Utilization



Numbers rounded to nearest whole percentages

Percentage Arrival Utilization



Numbers rounded to nearest whole percentages