

San Francisco International Airport

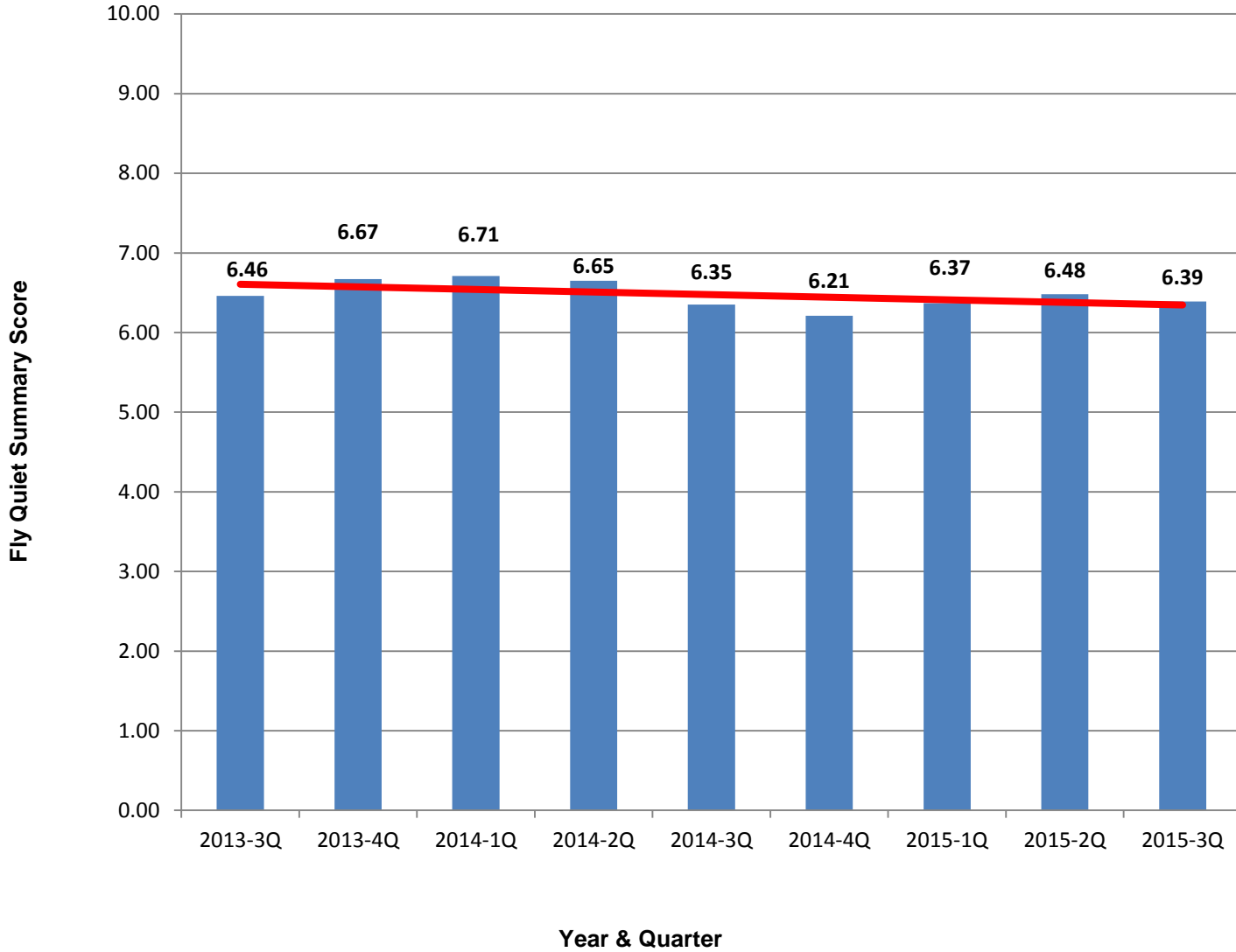
Fly Quiet Report

Presented at the December 2, 2015
Airport Community Roundtable Meeting
SFO Aircraft Noise Abatement Office
Third Quarter 2015



Fly Quiet Summary Averages

San Francisco International Airport



Top 5

-
-
-
-
-

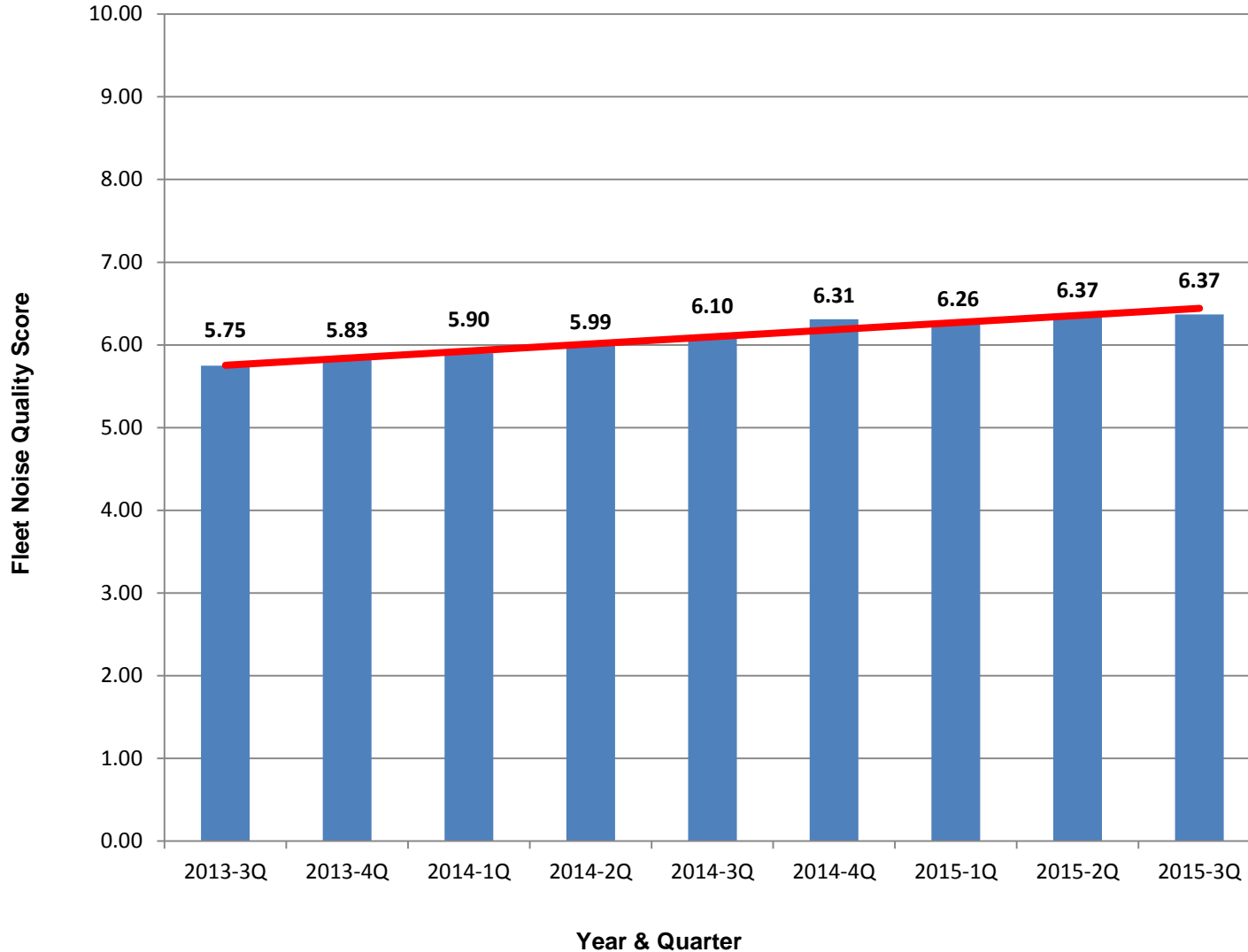
Bottom 5

-
-
-
-
-

— Average of Quarterly Averages, Airline Rankings are for top 5 and bottom 5 performers for this category for current quarter, new airlines to top and bottom 5

Fleet Noise Quality Averages

San Francisco International Airport




Top 5



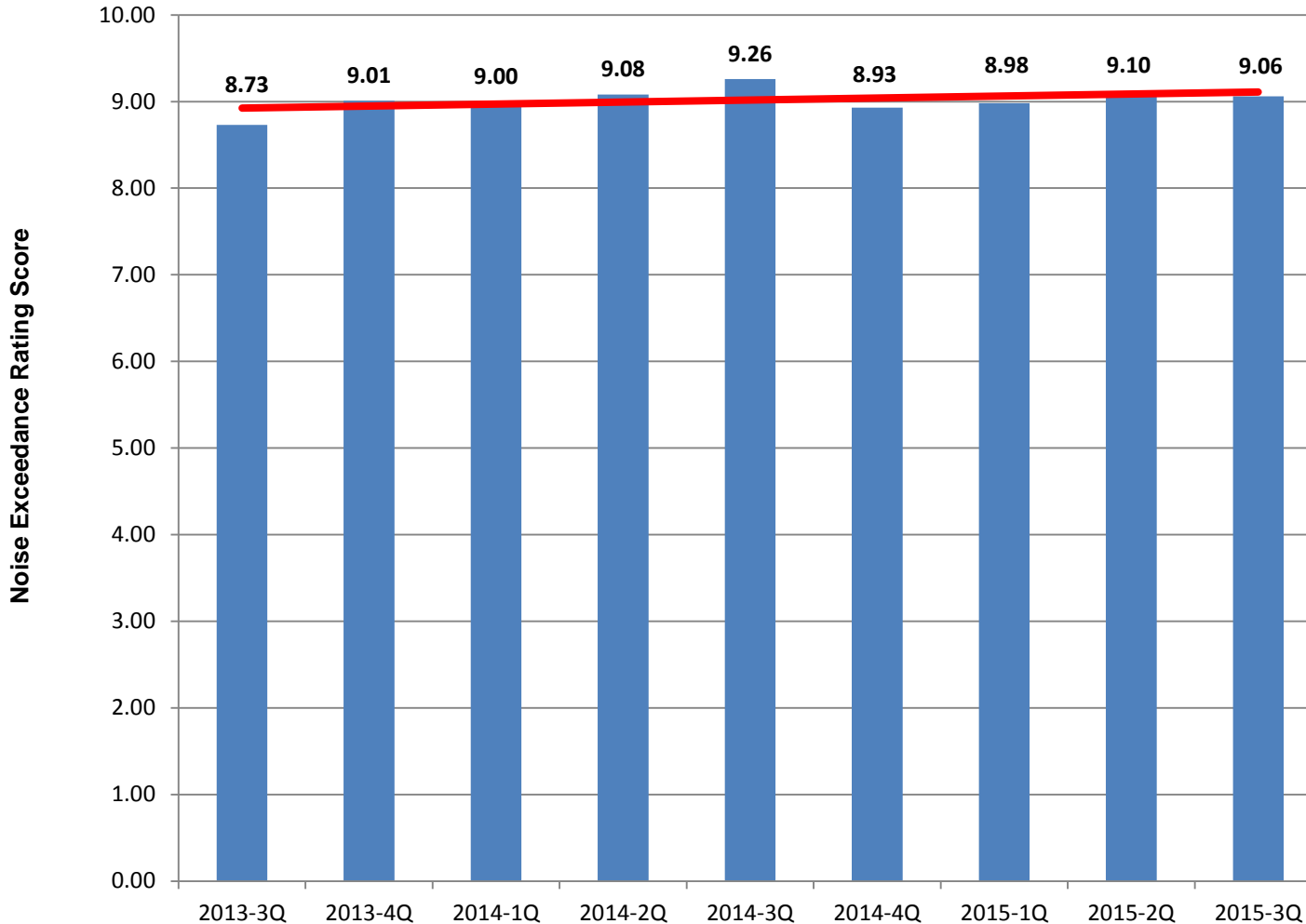
Bottom 5



— Average of Quarterly Averages, Airline Rankings are for top 5 and bottom 5 performers for this category for current quarter,  new airlines to top and bottom 5

Noise Exceedance Rating Averages

San Francisco International Airport



Top 5



Bottom 5

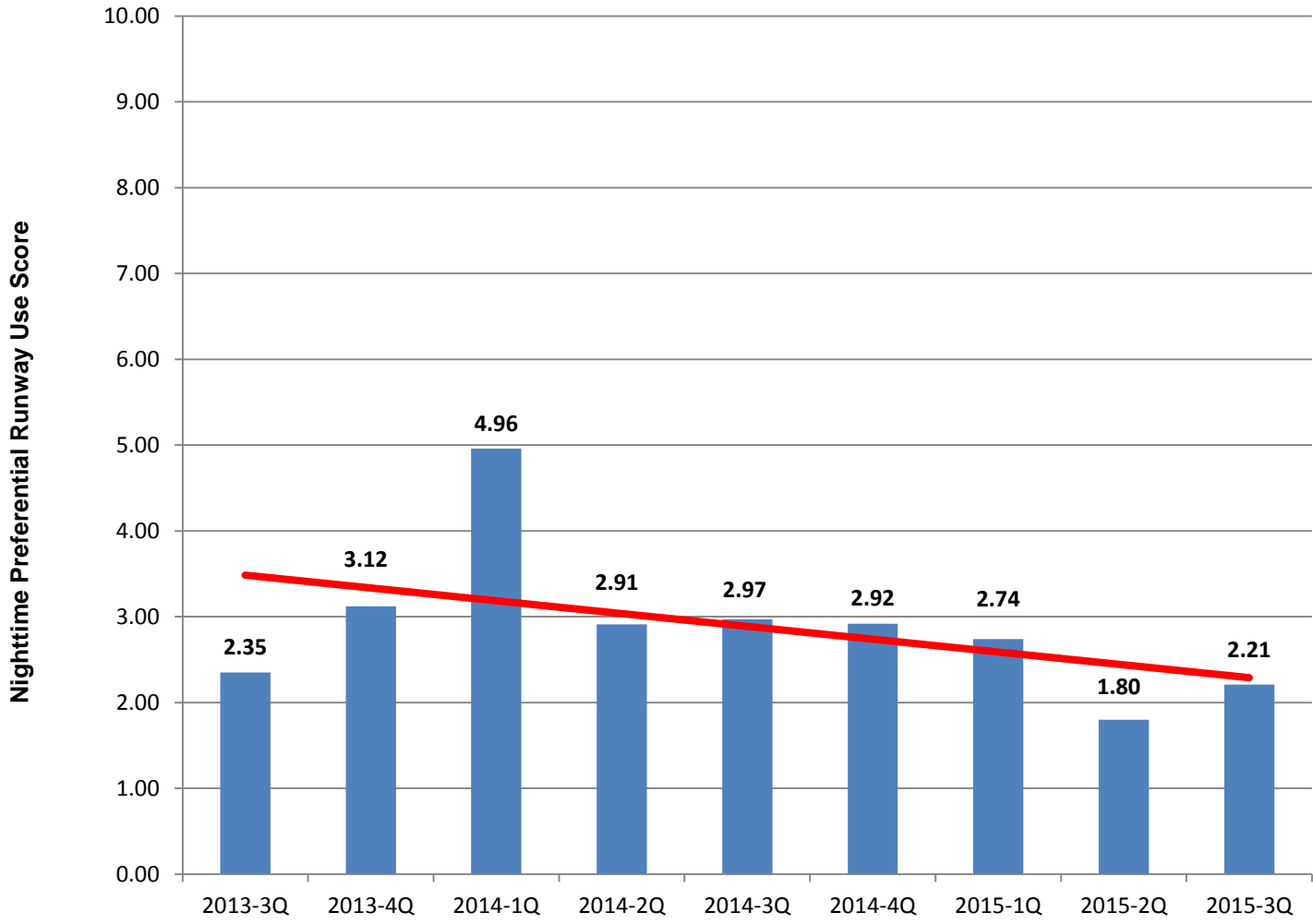


Year & Quarter

— Average of Quarterly Averages, Airline Rankings are for top 5 and bottom 5 performers for this category for current quarter, new airlines to top and bottom 5

Nighttime Preferential Runway Use Averages

San Francisco International Airport



Top 5

- ATLAS AIR
- AIRFRANCE
- jetBlue
- American Airlines
- UNITED

⋮

Bottom 5

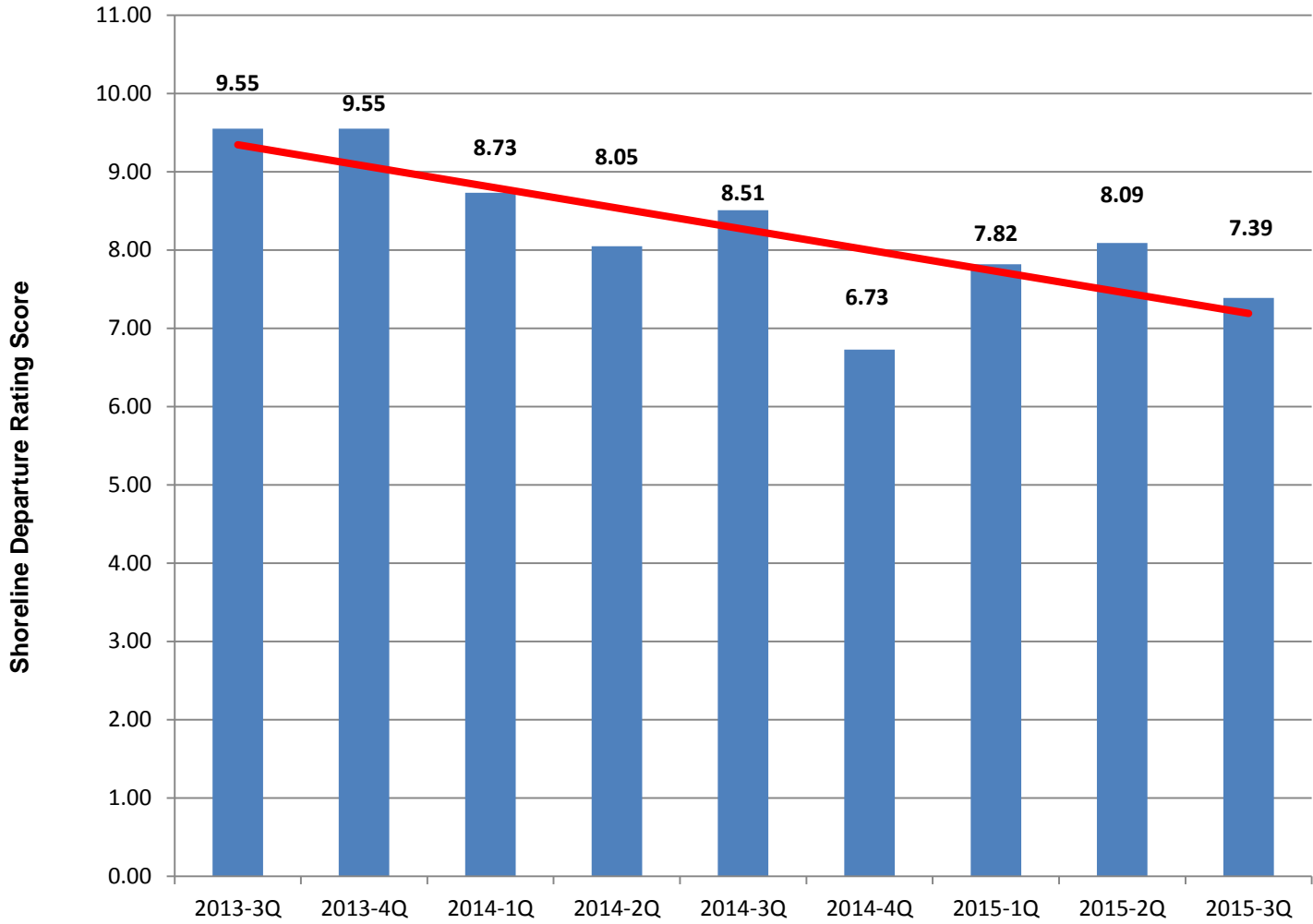
- Avianca
- JAPAN AIRLINES
- ASIANA AIRLINES
- CHINA AIRLINES
- CATHAY PACIFIC

Year & Quarter

— Average of Quarterly Averages, Airline Rankings are for top 5 and bottom 5 performers for this category for current quarter, new airlines to top and bottom 5

Shoreline Departure Rating Averages

San Francisco International Airport



Top 5

-
-
-
-
-

!

Bottom 5

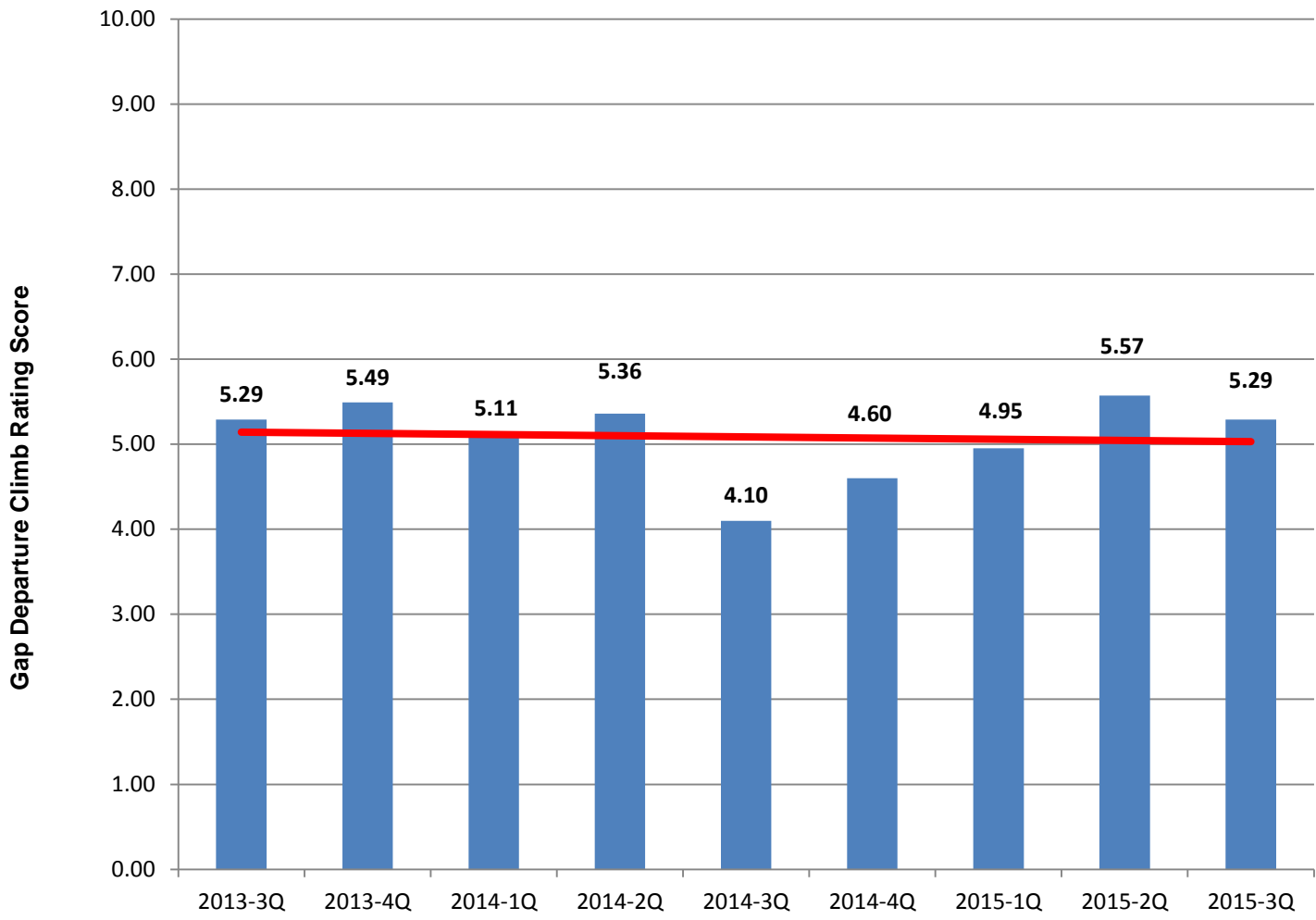
-
-
-
-
-

Year & Quarter

— Average of Quarterly Averages, Airline Rankings are for top 5 and bottom 5 performers for this category for current quarter, new airlines to top and bottom 5

Gap Departure Climb Rating Averages

San Francisco International Airport



Year & Quarter

Top 5



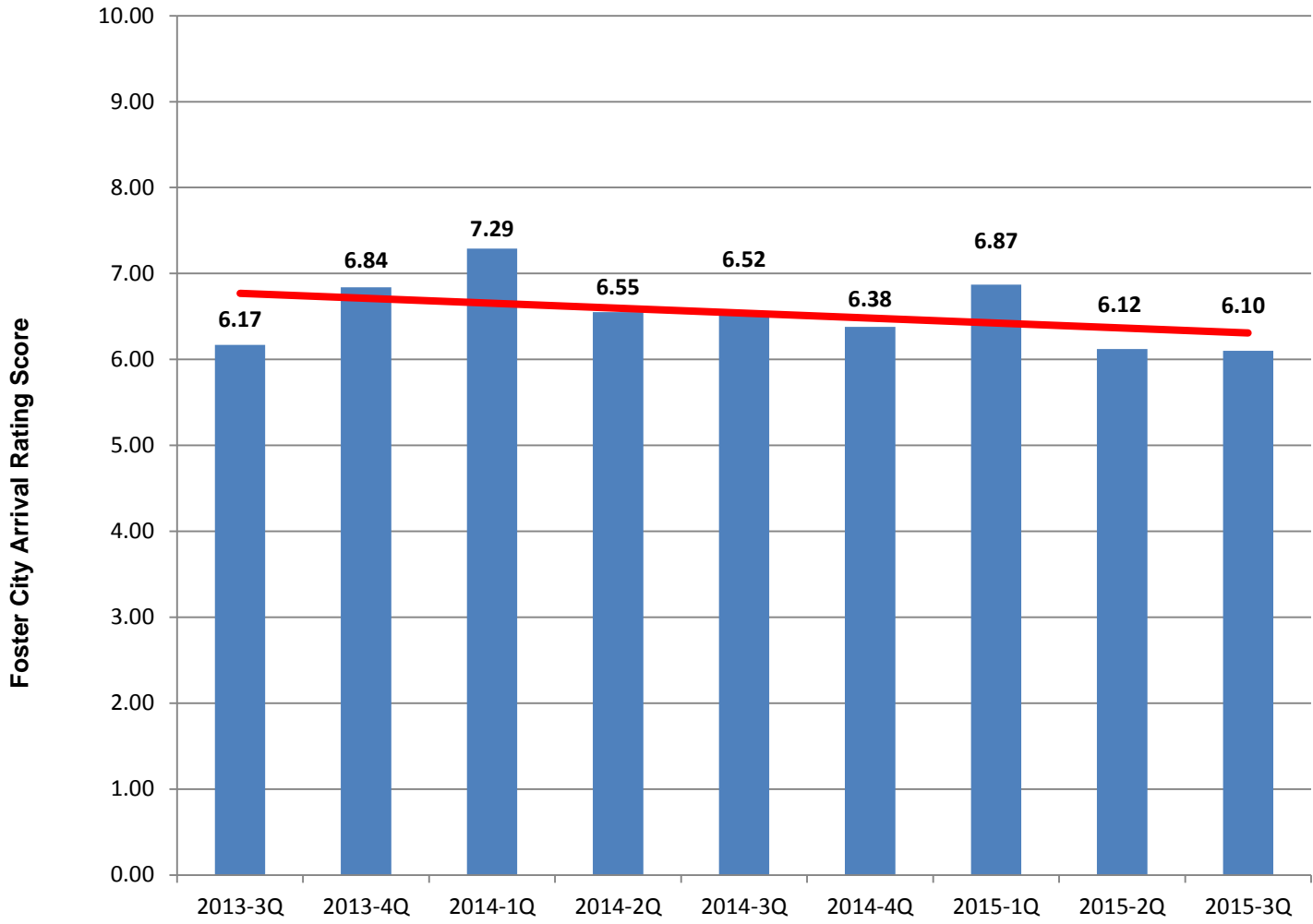
Bottom 5



— Average of Quarterly Averages, Airline Rankings are for top 5 and bottom 5 performers for this category for current quarter, new airlines to top and bottom 5

Foster City Arrival Rating Averages

San Francisco International Airport



Top 5

-
-
-
-
-

Bottom 5

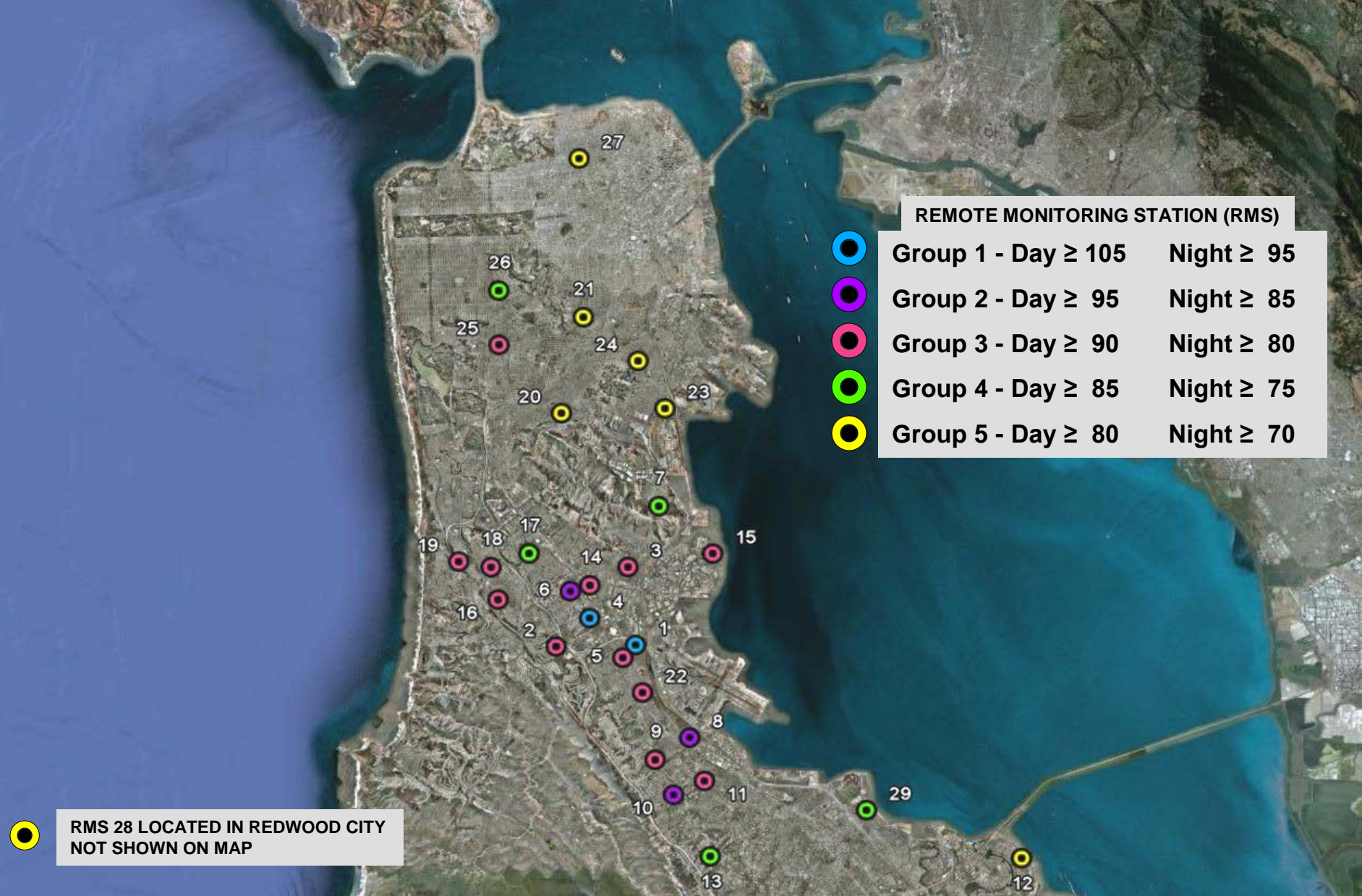
-
-
-
-
-

— Average of Quarterly Averages, Airline Rankings are for top 5 and bottom 5 performers for this category for current quarter, new airlines to top and bottom 5

Noise Exceedance Rating

Noise Monitor Day/Night Thresholds

San Francisco International Airport



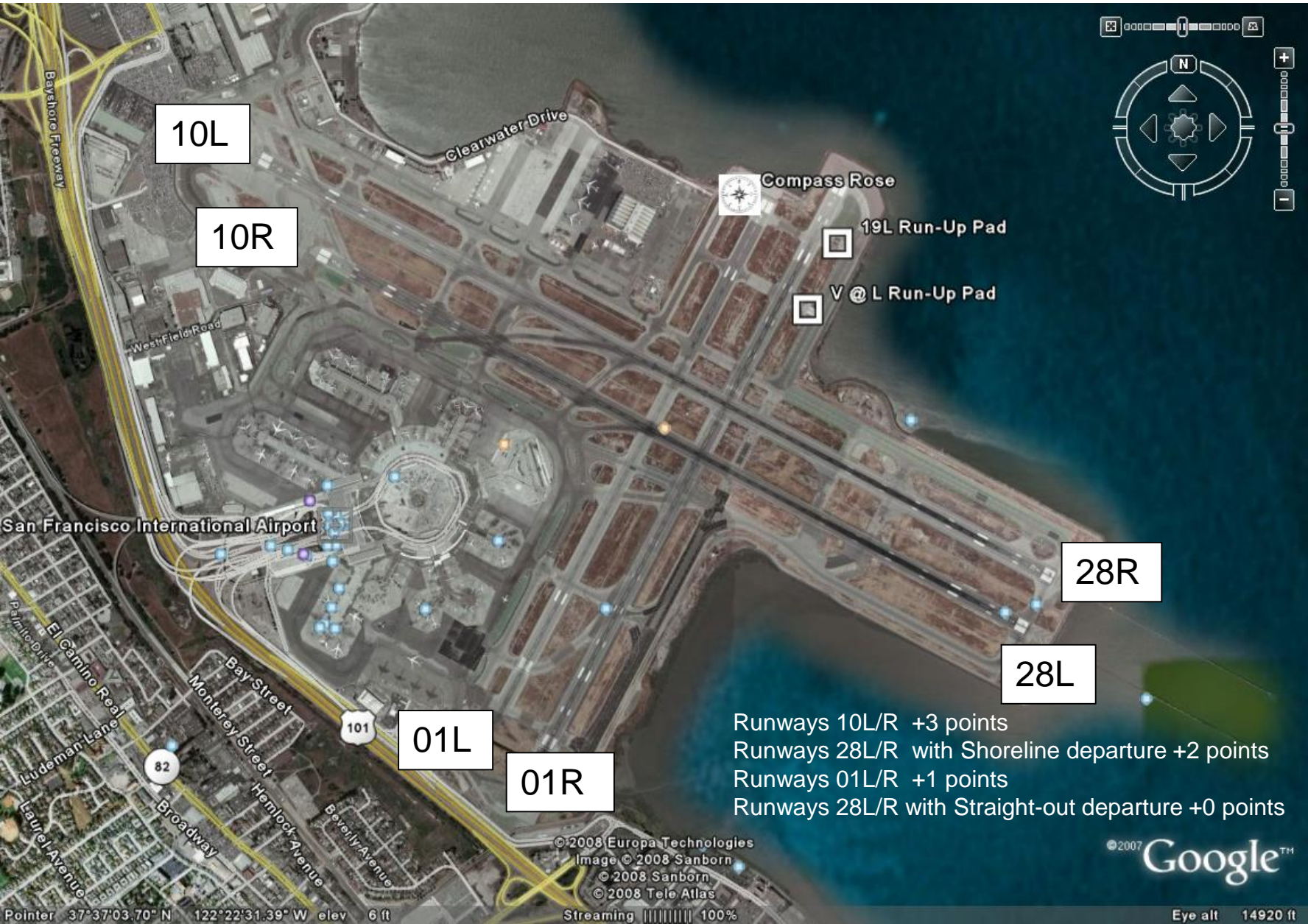
REMOTE MONITORING STATION (RMS)

	Group 1 - Day \geq 105	Night \geq 95
	Group 2 - Day \geq 95	Night \geq 85
	Group 3 - Day \geq 90	Night \geq 80
	Group 4 - Day \geq 85	Night \geq 75
	Group 5 - Day \geq 80	Night \geq 70

RMS 28 LOCATED IN REDWOOD CITY NOT SHOWN ON MAP

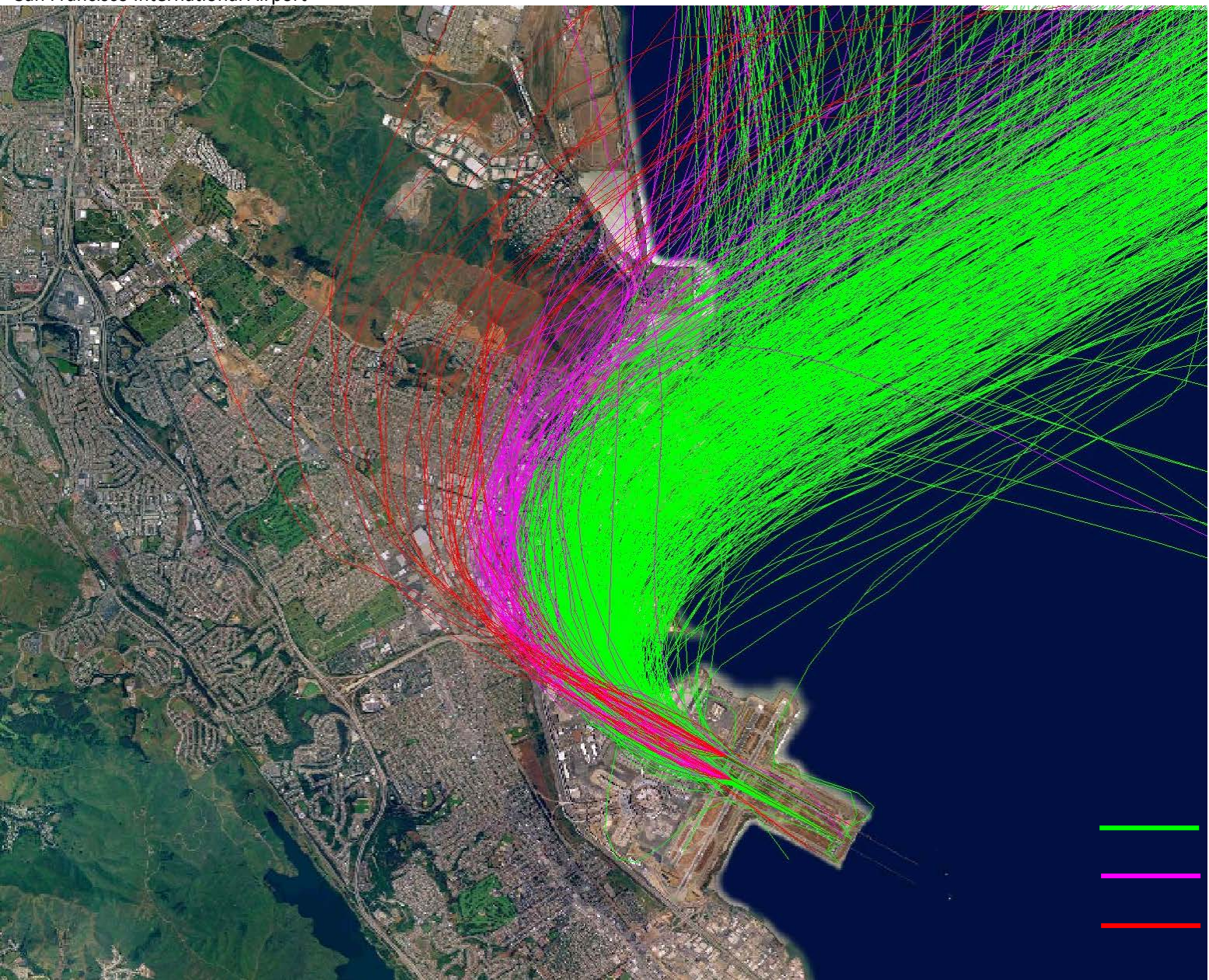
Nighttime Preferential Runway Use

San Francisco International Airport



Shoreline Departure Rating

San Francisco International Airport

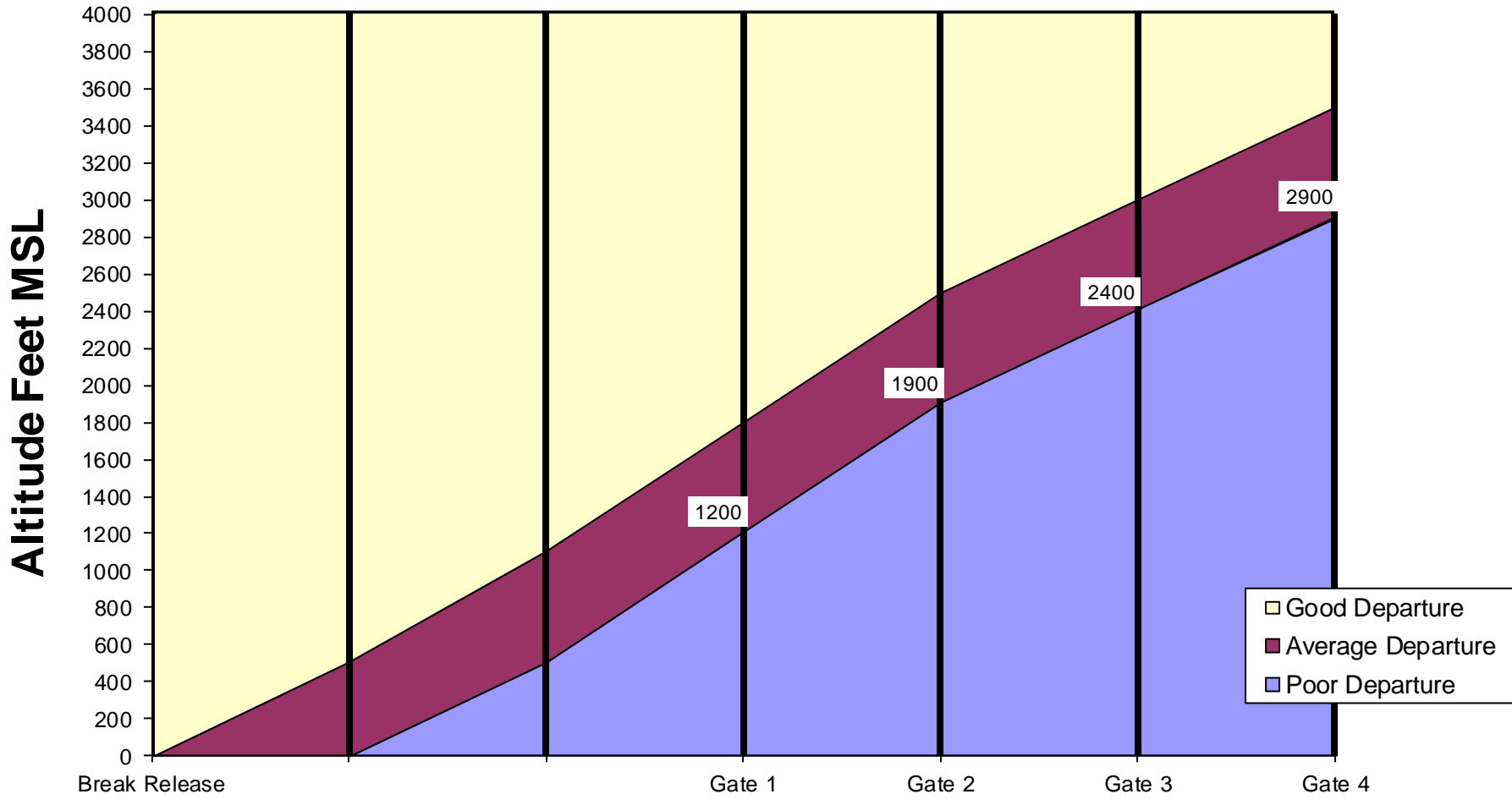


-  Good (+2 points)
-  Marginal (+1 points)
-  Poor (0 points)

Gap Departure Rating

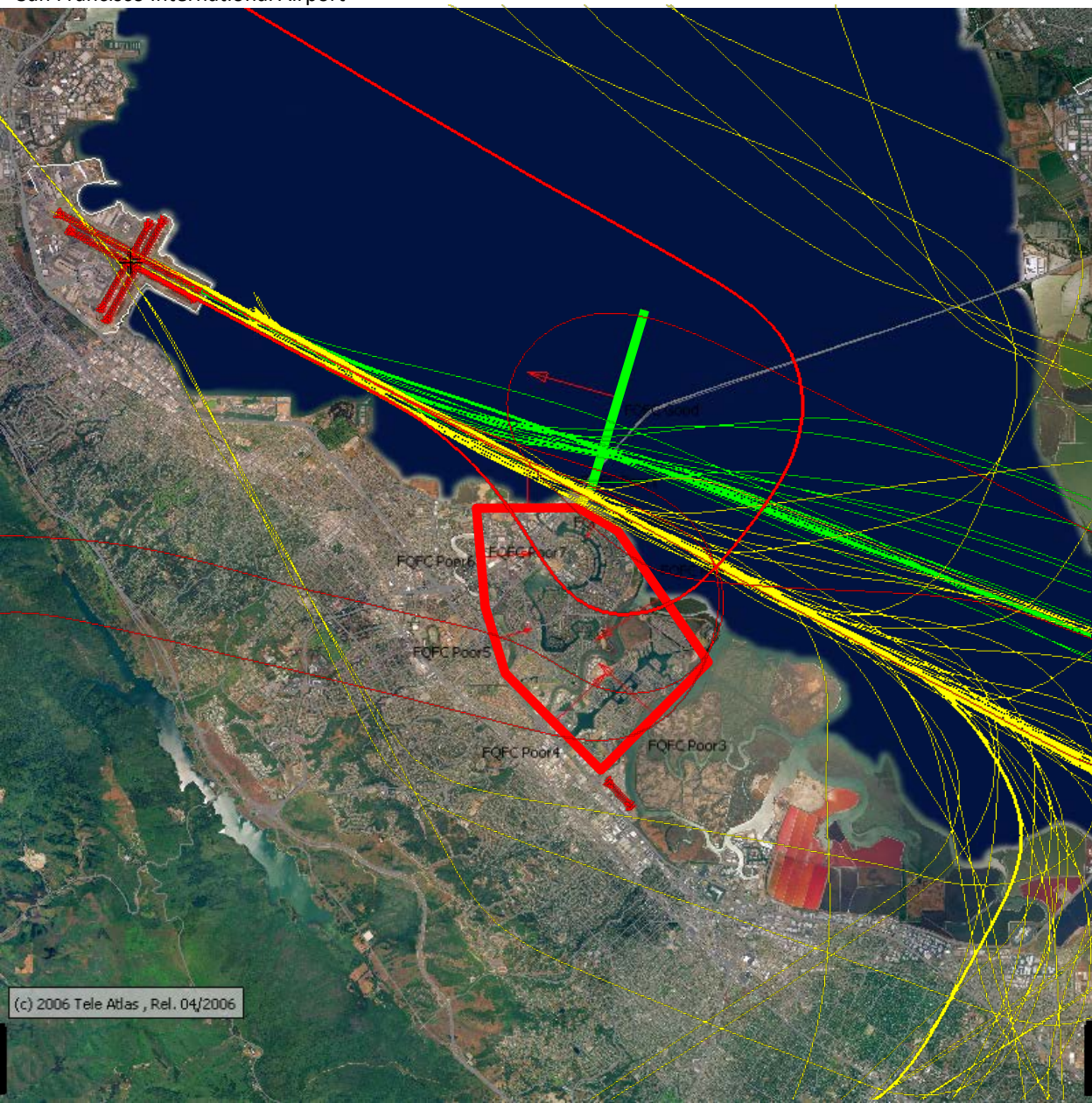
San Francisco International Airport

Altitude Depiction of Gap Departure Criteria Boeing 747-400 Domestic



Foster City Arrival Rating

San Francisco International Airport



-  Good (+2 points)
-  Marginal (+1 points)
-  Poor (0 points)