

Airport Director's Report

**Presented at the December 2, 2015
Airport Community Roundtable Meeting
SFO Aircraft Noise Abatement Office
August 2015**



Monthly Noise Exceedance Report
 San Francisco International Airport -- Director's Report
 Period: August 2015



Airline	Noise Exceedances				Noise Exceedance Quality Rating
	Total Noise Exceedances	Total Operations per Month	Exceedances per 1,000 Operations	Score	
SKW	19	6,598	3	9.97	
SCX	2	164	12	9.86	
DAL	35	2,287	15	9.83	
THY	1	63	16	9.82	
ANA	1	62	16	9.82	
CES	1	62	16	9.82	
CSN	1	62	16	9.82	
ASA	19	1,140	17	9.81	
FFT	7	371	19	9.78	
SWA	51	2,614	20	9.78	
CPZ	24	1,110	22	9.75	
VRD	76	3,404	22	9.74	
BAW	3	125	24	9.73	
AFR	3	121	25	9.72	
SWR	3	102	29	9.66	
ETD	2	62	32	9.63	
AAL	93	2,863	32	9.63	
UAL	364	10,875	33	9.62	
ACA	26	734	35	9.60	
AMX	7	176	40	9.55	
WJA	6	126	48	9.46	
JBU	52	913	57	9.35	
VIR	7	106	66	9.25	
TAI	13	124	105	8.80	
NCA	8	52	154	8.24	
FDX	16	84	190	7.82	
SIA	28	123	228	7.40	
GTI	21	82	256	7.07	
HAL	42	124	339	6.13	
EVA	49	138	355	5.94	
CAL	41	106	387	5.58	
JAL	25	61	410	5.32	
CPA	68	150	453	4.82	
ABX	1	2	500	4.29	
PAL	39	70	557	3.63	
KAL	68	122	557	3.63	
ANZ	30	53	566	3.53	
AAR	89	107	832	0.49	
CKS	7	8	875	0.00	
TOTAL	1,348	35,546	7,380		

Source: SFO Noise Abatement Office

Historical Significant Exceedances Report
 San Francisco International Airport -- Director's Report
 Period: **August 2015**



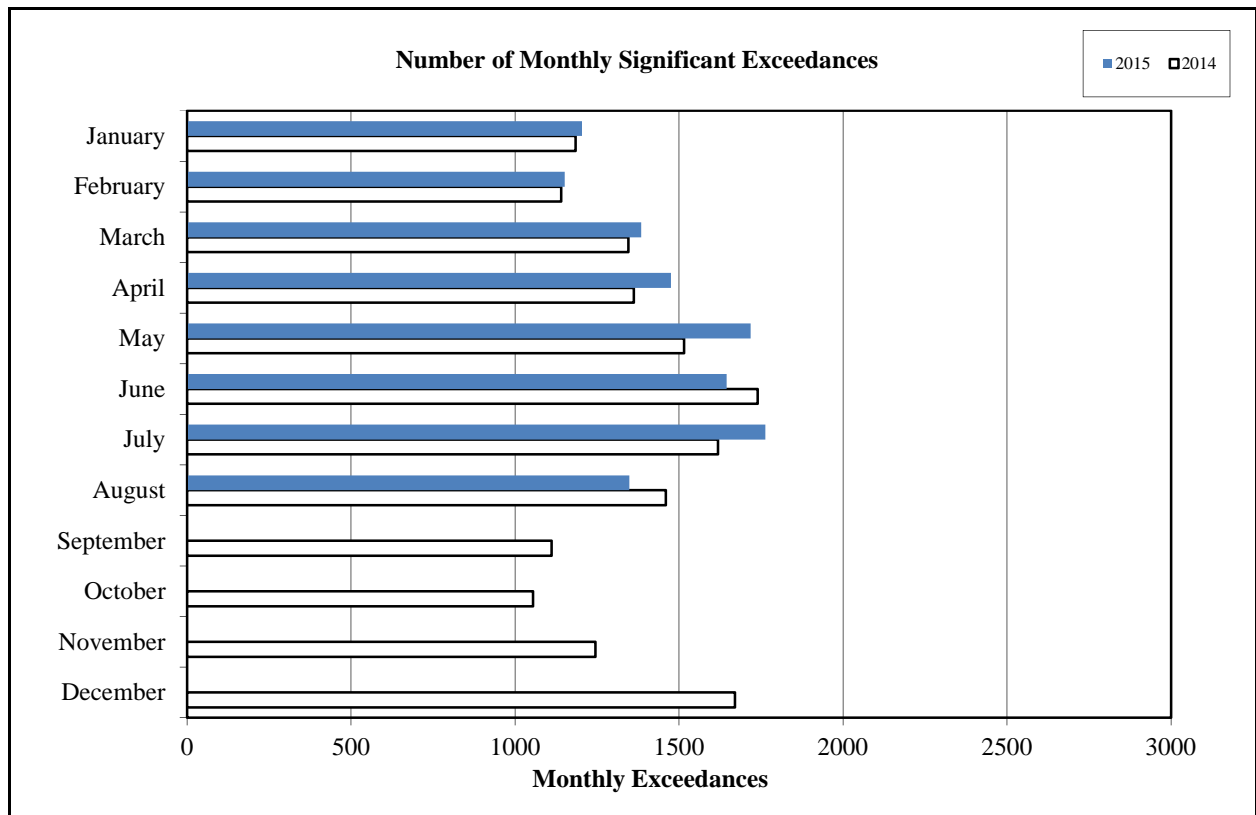
San Francisco International Airport

Month	Number of Monthly Significant Exceedances					Change from Last Year
	2011	2012	2013	2014	2015	
January	1,580	1,378	1,428	1,184	1,204	20
February	1,429	1,581	1,176	1,141	1,151	10
March	1,681	1,703	1,671	1,345	1,384	39
April	1,900	1,870	1,910*	1,362	1,475	113
May	2,024	1,912	1,859*	1,515	1,718	203
June	1,947	2,355	1,915	1,740	1,645	-95
July	2,017	2,621	1,647	1,619	1,763***	144
August	1,847	1,823	1,638**	1,460	1,348	-112
September	1,609	1,464	1,352	1,111		0
October	1,572	1,689	1,277	1,055		0
November	1,575	1,421	1,262	1,245		0
December	1,447	1,439	1,160	1,670		0
Annual Total	20,628	21,256	18,295	16,447	11,688	
Year to Date Trend	20,628	21,256	18,295	16,447	11,688	322

* Revised with correct amount of exceedance - 8/5/13

** No data available from Site 7, August 1-26

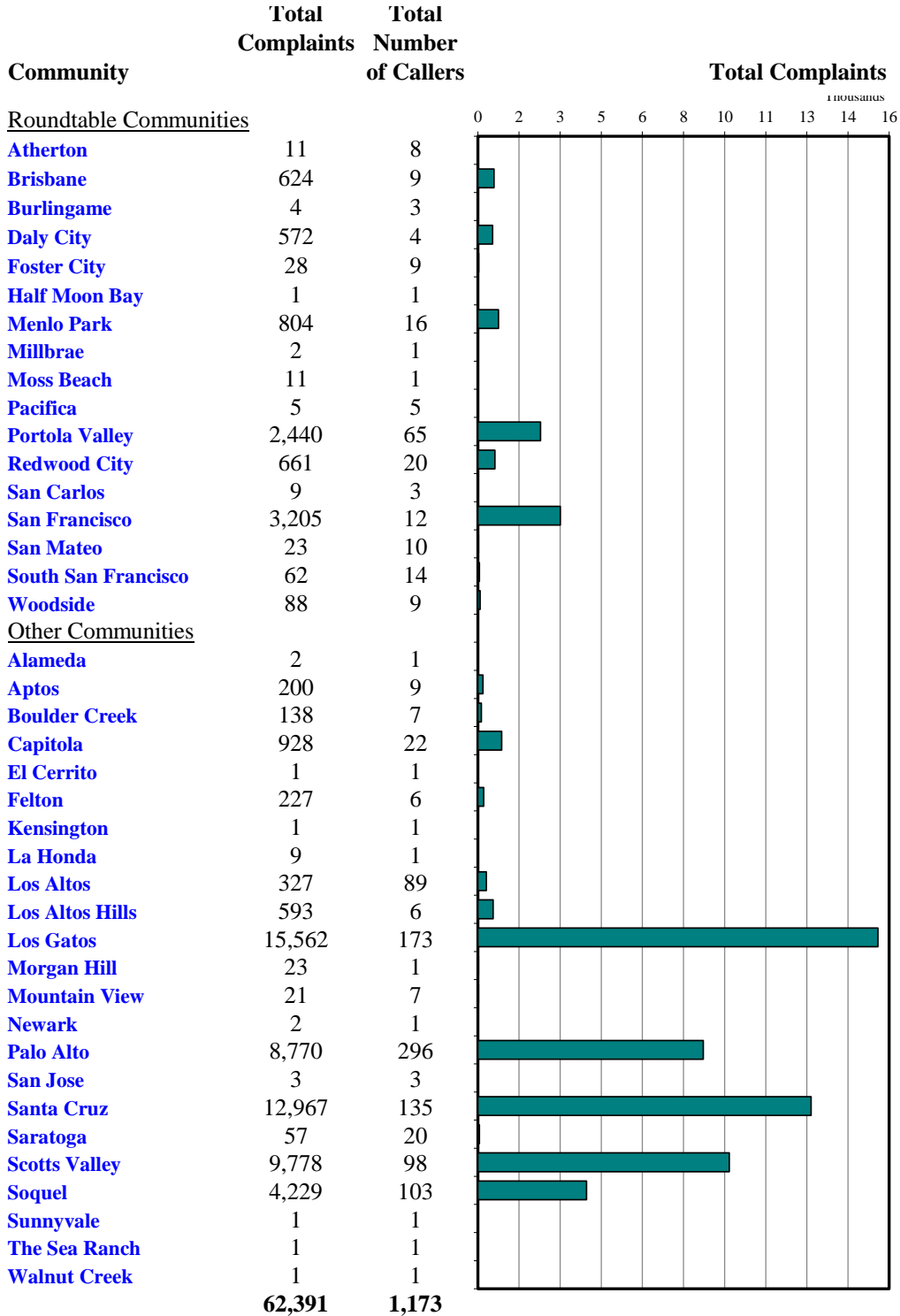
***No data available from Site 2 starting July 17



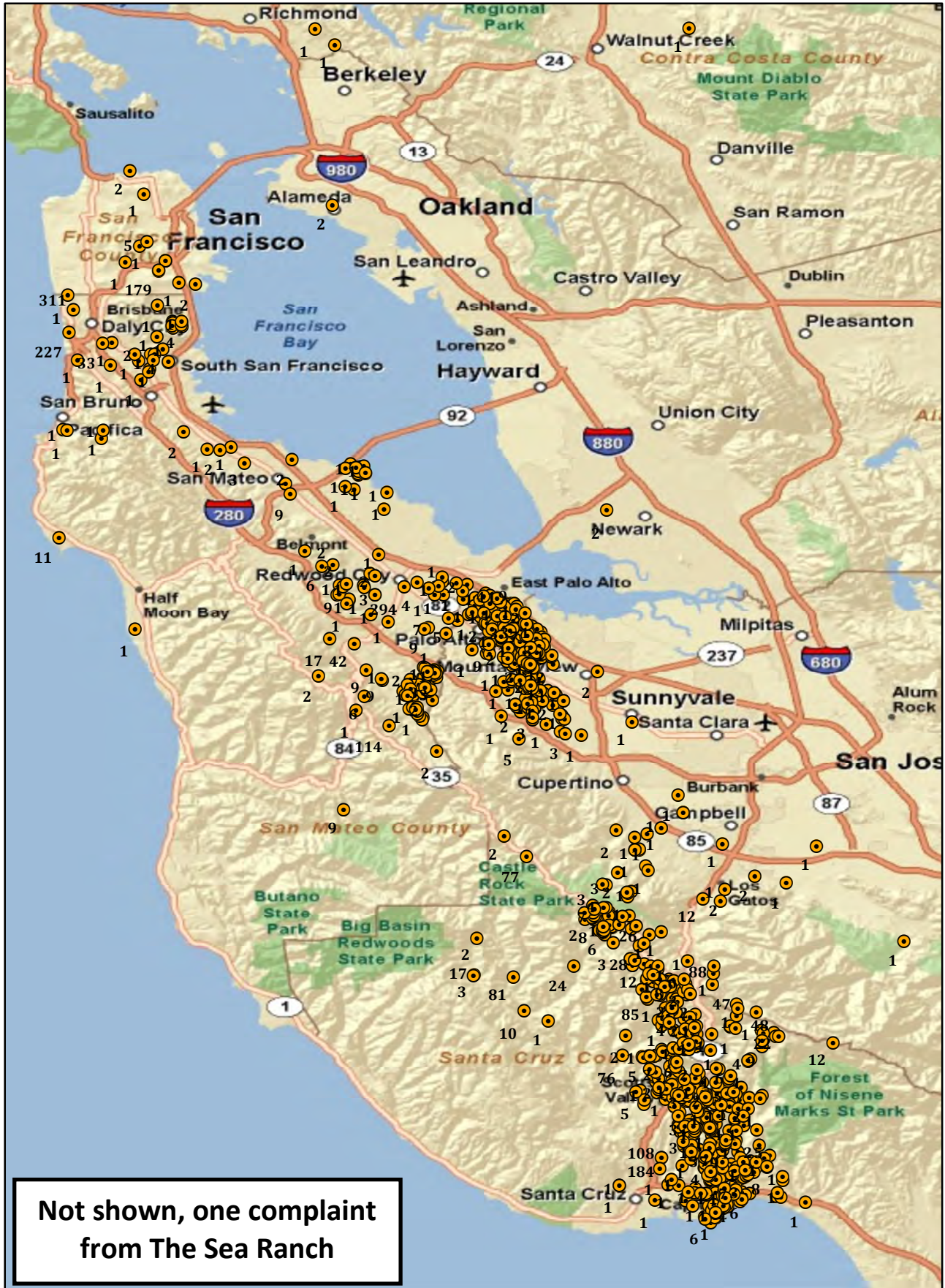


Monthly Calls by Community

Source: Airport Noise Monitoring System



Monthly Noise Complaint Summary Map August 2015







Monthly Nighttime Power Runups Report (85-06-AOB)

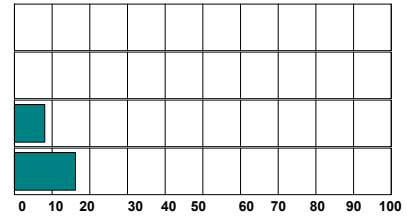
San Francisco International Airport -- Director's Report

Period : **August 2015**

Time of Day : From 10 pm through 7 am



Airline	Code	Number of Runups	Runups Per 1,000 Departures	Percentage of Runups
 DELTA	DAL	1	0.9	4%
 Avianca	TAI	1	16.1	4%
 UNITED	UAL	9	1.7	32%
 American Airlines	AAL	17	11.9	61%
Total		28		



A power runup is a procedure used to test an aircraft engine after maintenance is completed.

This is done to ensure safe operating standards prior to returning the aircraft to service.

The power settings tested range from idle to full power and may vary in duration.

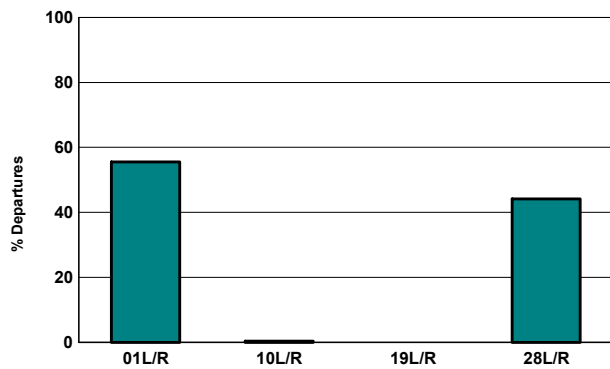


Runway Utilization (1 am to 6 am)

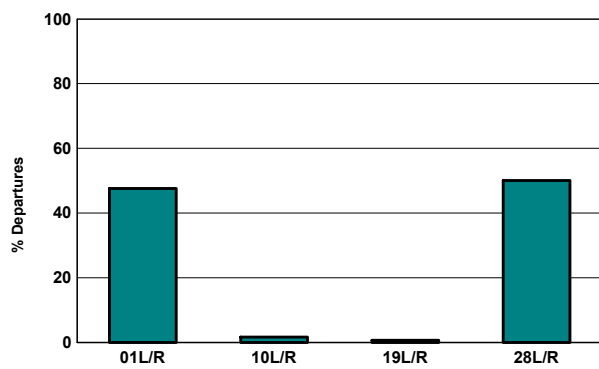
Monthly Jet Departures

	Jan	Feb	Mar	Apr	May	Jun	Jul	Aug	Sep	Oct	Nov	Dec	YTD
01L/R	99	72	114	178	206	259	303	302	-	-	-	-	1,533
10L/R	5	22	6	17	1	-	-	2	-	-	-	-	53
19L/R	-	22	-	-	-	-	-	-	-	-	-	-	22
28L/R	81	82	181	226	262	269	270	240	-	-	-	-	1,611
Total	185	198	301	421	469	528	573	544	-	-	-	-	3,219
01L/R	54%	36%	38%	42%	44%	49%	53%	56%	0%	0%	0%	0%	48%
10L/R	3%	11%	2%	4%	0%	0%	0%	0%	0%	0%	0%	0%	2%
19L/R	0%	11%	0%	0%	0%	0%	0%	0%	0%	0%	0%	0%	1%
28L/R	44%	41%	60%	54%	56%	51%	47%	44%	0%	0%	0%	0%	50%

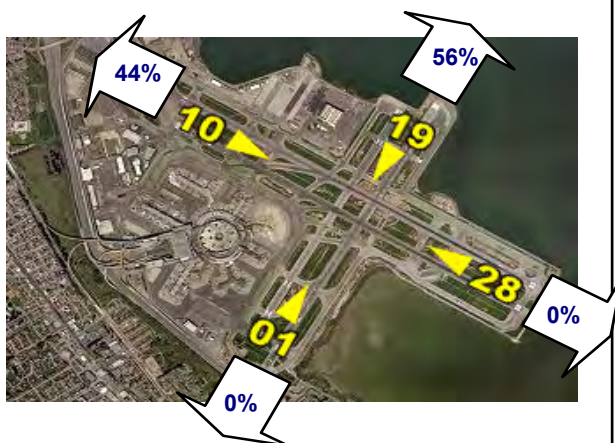
Current Month (1 am to 6 am)



Year-to-Date (1am to 6 am)

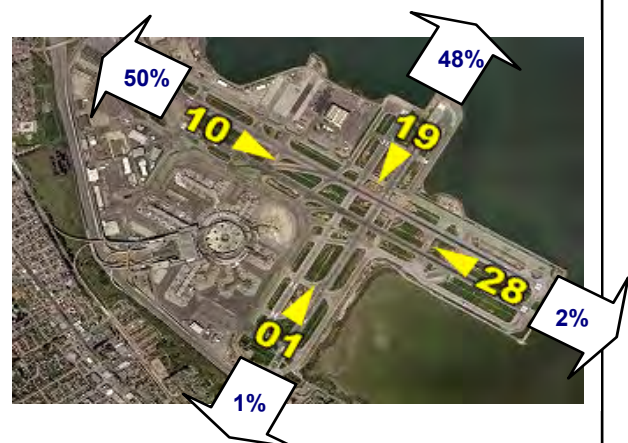


Current Month (1 am to 6 am)



Numbers rounded to nearest whole percentages

Year-to-Date (1am to 6am)



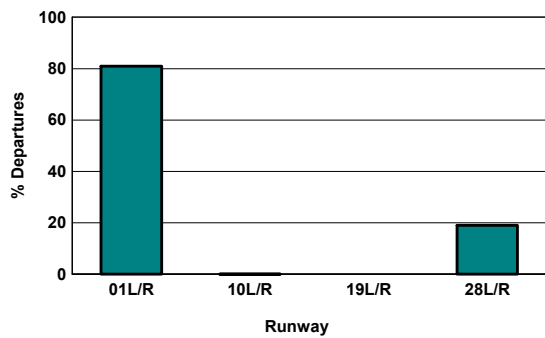
Numbers rounded to nearest whole percentages

Runway Utilization (All Hours)

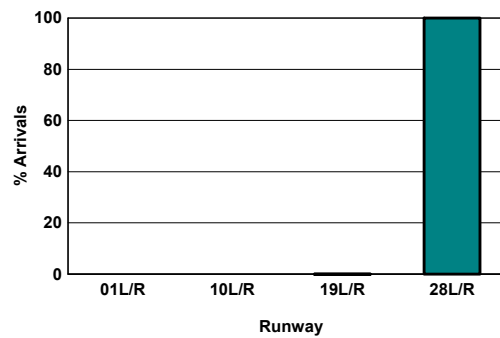
Source: Airport Noise Monitoring System

	Runway Utilization				Total
	01L/R	10L/R	19L/R	28L/R	
Total Monthly Operations					
Departures	14,674	2	0	3,464	18,140
Arrivals	0	0	1	18,207	18,208
Percentage Utilization					
Departures	80.9%	0.0%	0.0%	19.1%	100%
Arrivals	0.0%	0.0%	0.0%	100.0%	100%

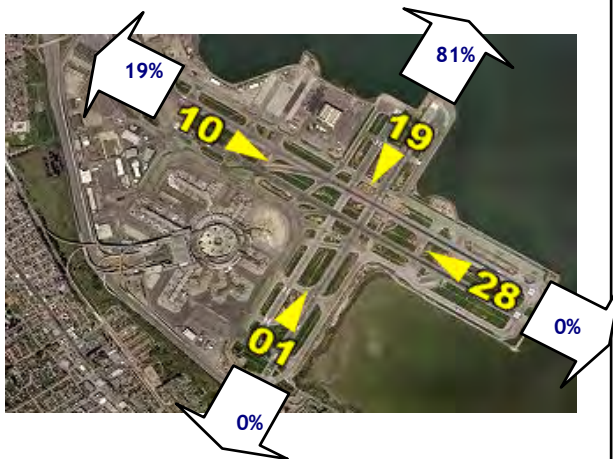
Departures (All Hours)



Arrivals (All Hours)



Percentage Departure Utilization



Numbers rounded to nearest whole percentages

Percentage Arrival Utilization



Numbers rounded to nearest whole percentages